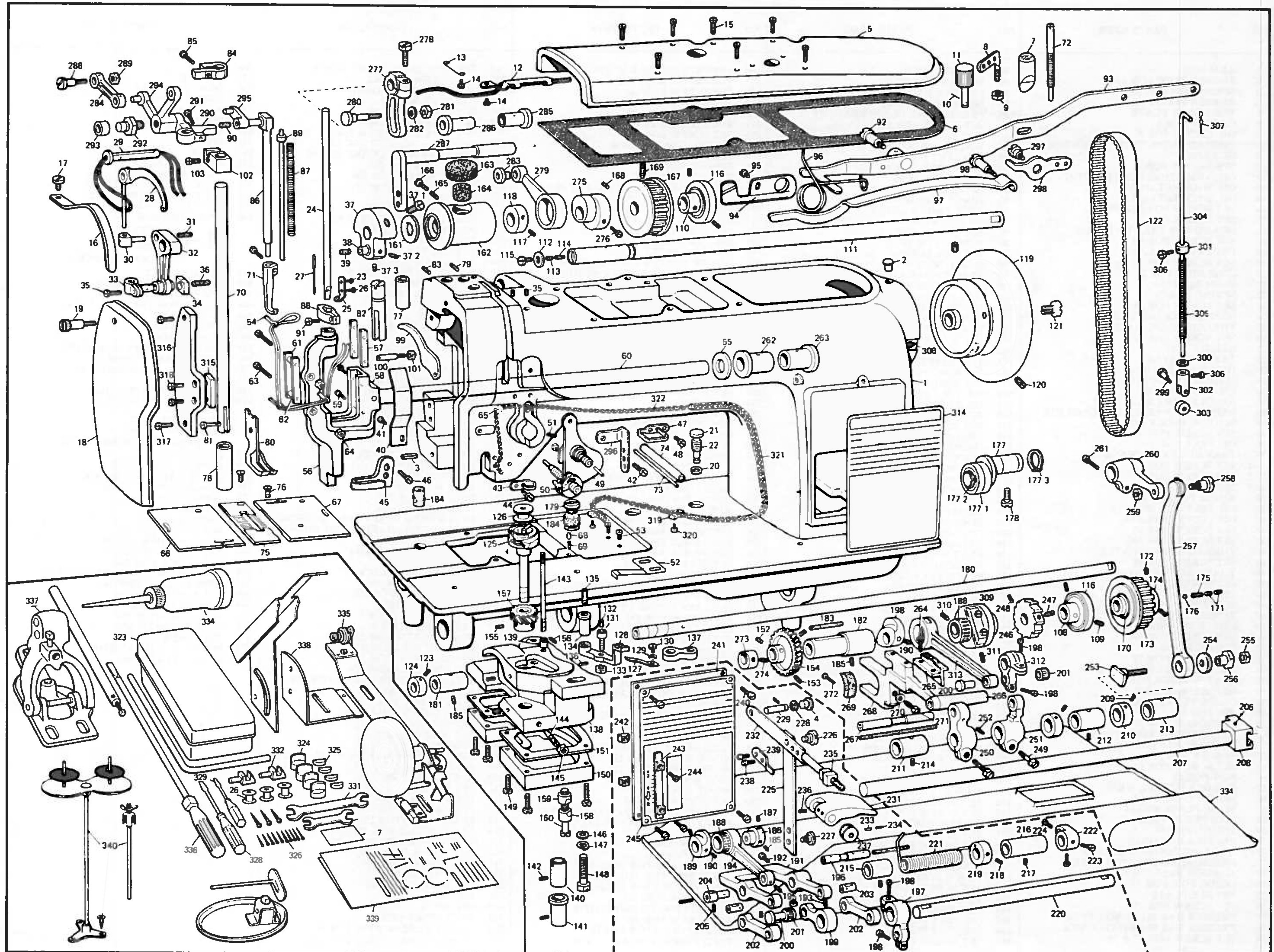


TOYOTA AD331 & AD332 (L.LP)



TOYOTA AD331 & AD332 (L.LP)

NO.	PARTS NAME	NO.	PARTS NAME	NO.	PARTS NAME	NO.	PARTS NAME	NO.	PARTS NAME
1	ARM BED	80	PRESSER FOOT	166	SPRING RETAINER SCREW	243	FEED STOPPER FRONT BLOCK	326	NAIL
2	RUBBER PLUG FOR 110	81	SET SCREW FOR 80	167	TIMING GEAR UPPER	244	SET SCREW FOR 242	327	NEEDLE
3	SPRING PIN FOR 18	82	PRESSER BAR GUIDE	168	SET SCREW FOR 167	245	MODEL PLATE (AD-331)	328	DRIVER MIDDLE
4	RUBBER PLUG FOR 229	83	SET SCREW FOR 82	169	SET SCREW FOR 167	246	LATCHET WHEEL	329	DRIVER SMALL
5	TOP COVER PLATE	84	PRESSER BAR GUIDE BRACKET	170	STOP RING FOR 173	247	SET SCREW FOR 246	330	WRENCH SMALL
6	GASKET FOR 5	85	SET SCREW FOR 84	171	ROCK SCREW FOR 175	248	SET SCREW FOR 246	331	WRENCH LARGE
7	OIL GAUGE FOR 5	86	WALKING FOOT BAR	172	SET SCREW FOR 174	249	SET SCREW FOR 251 & 250	332	BED HINGE
8	THREAD GUIDE WITH THREE HOLES	87	WALKING FOOT BAR SPRING	173	TIMING GEAR LOWER	250	FEED BAR BELL CRANK LEFT	333	OIL PAN
9	NUT FOR 8	88	BRACKET FOR 89	174	SAFETY CLUTCH	251	FEED BAR BELL CRANK RIGHT	334	OILER
10	SPRING PIN FOR 11	89	GUIDE BAR FOR 87	175	SPRING FOR 174	252	SET SCREW FOR 267	335	BOBBIN WINDER
11	OIL ADJUSTING PUSH BUTTON	90	OIL FELT FOR 86	176	CLUTCH BEARING	253	HINGE SCREW FOR 208	336	DRIVER LARGE
12	OIL WICK RETAINER	91	SET SCREW FOR 88	177	TENSION ADJUSTING PULLEY SHAFT	254	FLAT WASHER FOR 253	337	KNEE LEFTER COMPLETE
13	OIL WICK RETAINER	92	HINGE SCREW FOR 93	177-1	TENSION ADJUSTING PULLEY	255	NUT FOR 256	338	BELT COVER COMPLETE
14	SET SCREW FOR 12 & 13	93	KNEE LIFTER LEVER	177-2	STOP RING FOR 177-1	256	HINGE NUT FOR 253	339	INSTRUCTION BOOKLET
15	SET SCREW FOR 5	94	ADJUST PLATE FOR TENSION RELEASE	177-3	STOP RING FOR 177	257	NEEDLE FEED DRIVE ROD	340	SPOOL HOLDER
16	GUARD FOR TAKE UP LEVER	95	SET SCREW FOR 94	178	SET SCREW FOR 177	258	HINGE SCREW FOR 257		
17	SET SCREW FOR 16	96	SPRING FOR 93	179	OIL CAP SCREW FOR 184	259	NUT FOR 258		
18	FACE COVER PLATE	97	PRESSER SPRING	180	LOWER SHAFT	260	NEEDLE FEED DRIVE ARM		
19	SET SCREW FOR 18	98	HINGE SCREW FOR 97	181	LOWER SHAFT FRONT BUSHING	261	SET SCREW FOR 260		
20	STOP RING FOR 21	99	PRESSER BAR LIFTER LEVER	182	LOWER SHAFT CENTER BUSHING	262	FRONT BUSHING FOR 60		
21	PUSH BUTTON	100	HINGE SCREW FOR 99	183	OIL FELT FOR 182	263	REAR BUSHING FOR 60		
22	SPRING FOR 21	101	NUT FOR 100	184	OIL FELT FOR 181 & 182	264	SET SCREW FOR 265		
23	SET SCREW FOR 25	102	PRESSER SPRING SUPPORT	185	SET SCREW FOR 186	265	FEED DOG		
24	NEEDLE BAR ONLY	103	SET SCREW FOR 102	186	FEED CAM	266	FEED BAR		
25	THREAD GUIDE FOR 24	108	BEARING COLLAR FOR 180	187	SET SCREW FOR 186	267	FEED BAR SHAFT		
26	SET SCREW FOR 27	109	SET SCREW FOR 108 & 110	188	NEEDLE BEARING FOR 186	268	FEED FORK		
27	NEEDLE # 23	110	BEARING COLLAR FOR 111	189	BEARING GUIDE FOR 188	269	OIL FELT FOR 268		
28	TAKE UP LEVER	111	TOP SHAFT ONLY	190	SET SCREW FOR 189	270	SPRING WASHER FOR 271		
29	HINGE STUD FOR 28	112	PACKING FOR 115	191	FEED REGULATOR BODY	271	SET SCREW FOR 268		
30	SLIDING GUIDE FOR 28	113	SET SCREW FOR 114	192	SET SCREW FOR 191	272	SET SCREW FOR 269		
31	OIL FELT FOR 30	114	OIL FELT FOR 111	193	SET SCREW FOR 203	273	FEED LIFTING CAM		
32	NEEDLE BAR CRANK ROD	115	OIL STOPPER SCREW	194	FEED ROD	274	SET SCREW FOR 273		
33	NEEDLE BAR BRACKET COMPLETE	116	BEARING COMPLETE	195	SET SCREW FOR 200	275	FEED CAM UPPER		
34	SLIDING BLOCK FOR 33	117	SET SCREW FOR 118	196	HINGE SHAFT FOR 199	276	SET SCREW FOR 275		
35	SET SCREW FOR 33	118	COLLAR FOR 111	197	FEED ROCK ARM	277	UPPER FEED BAR ARM		
36	OIL FELT FOR 33	119	HAND WHEEL	198	SET SCREW FOR 197	278	SET SCREW FOR 277		
37	TAKE UP LEVER CRANK	120	SET SCREW FOR 119	199	FEED LINK A	279	UPPER FEED CONNECTING ROD		
37-1	SET SCREW FOR 37	121	CAP SCREW FOR 119	200	HINGE PIN FOR 194	280	HINGE SCREW FOR 279		
37-2	SET SCREW FOR 38	122	TIMING BELT	201	NEEDLE BEARING FOR 200	281	NUT FOR 280		
37-3	SET SCREW FOR 38	123	SET SCREW FOR 124	202	FEED LINK B	282	FLAT WASHER FOR 280		
38	HINGE PIN FOR 32	124	COLLAR FOR 180	203	HINGE PIN FOR 202	283	BUSHING FOR 279		
39	OIL FELT FOR 38	125	ROTATING HOOK ASSEMBLY	204	HINGE PIN FOR 191	284	FEED LINK UPPER		
40	OIL STOPPER PLATE	126	BOBBIN	205	SET SCREW FOR 204	285	UPPER FEED SHAFT REAR BUSHING		
41	SET SCREW FOR 40	127	OPENER	206	SPRING PIN FOR 208	286	UPPER FEED SHAFT FRONT BUSHING		
42	SET SCREW FOR 296	128	OPENER BRACKET	207	FEED ROCK SHAFT	287	UPPER FEED SHAFT		
43	THREAD GUIDE CENTER	129	FLAT WASHER FOR 130	208	FEED ROCK ARM REAR	288	HINGE SCREW FOR 284		
44	SET SCREW FOR 43	130	SET SCREW FOR 127	209	SET SCREW FOR 210	289	NUT FOR 288		
45	THREAD GUIDE LOWER	131	HINGE PIN FOR 137	210	COLLAR FOR 207	290	PRESSER BAR BRACKET		
46	SET SCREW FOR 45	132	OIL FELT FOR 131	211	FEED ROCK SHAFT FRONT BUSHING	291	SET SCREW FOR 290		
47	THREAD GUIDE UPPER	133	NUT FOR 131	212	FEED ROCK SHAFT CENTER BUSHING	292	PIVOT SCREW FOR 290		
48	SET SCREW FOR 47	134	HINGE PIN FOR 128	213	FEED ROCK SHAFT REAR BUSHING	293	ROLLER FOR 292		
49	TENSION COMPLETE	135	OIL FELT FOR 134	214	SET SCREW FOR 211 & 213	294	FEED LINK SUPPORT		
50	CHECK SPRING	136	SET SCREW FOR 134	215	FEED CONTROL SHAFT FRONT BUSHING	295	FEED LINK LOWER		
51	SET SCREW FOR 49	137	OPENER ROD	216	FEED CONTROL SHAFT REAR BUSHING	297	HINGE SCREW FOR 298		
52	STOPPER FOR 67	138	HOOK SADDLE	217	SET SCREW FOR 215 & 216	298	KNEE LIFTER LEVER B		
53	SET SCREW FOR 52	139	OIL GAUGE GUIDE	218	SET SCREW FOR 219	299	HINGE SCREW FOR 303		
54	OIL WICK RETAINER FOR 56	140	HOOK SHAFT UPPER BUSHING	219	SPRING ADJUST COLLAR	300	FLAT WASHER FOR 304		
55	FLAT WASHER FOR 60	141	HOOK SHAFT LOWER BUSHING	220	FEED CONTROL SHAFT	301	SPRING ADJUST COLLAR FOR 305		
56	NEEDLE BAR ARM	142	SET SCREW FOR 140 & 141	221	SPRING FOR 220	302	ROLLER BRACKET		
57	GUIDE PLATE FOR 34	143	OIL GAUGE	222	FEED REGULATOR ARM	303	ROLLER FOR 302		
58	PIN FOR 56	144	OIL REGULATING SCREW	223	SET SCREW FOR 222	304	KNEE LIFTER PULL ROD		
59	SET SCREW FOR 57	145	NUT FOR 144	224	SET SCREW FOR 222	305	SPRING FOR 304		
60	NEEDLE FEED ROCK SHAFT	146	FLAT WASHER FOR 148	225	FEED REGULATOR ROD	306	SET SCREW FOR 302		
61	GUIDE PLATE FOR 56	147	SPRING WASHER FOR 148	226	HINGE SCREW FOR 232	307	STOPPER PIN FOR 304		
62	SPACER FOR 61	148	SET SCREW FOR 138	227	HINGE SCREW FOR 225	308	STITCH LENGTH INDICATOR PLATE		
63	SET SCREW FOR 61	149	SET SCREW FOR 150	228	STOP RING FOR 229	309	FEED CAM COMPLETE		
64	NUT FOR 63	150	HOOK SADDLE COVER	229	HINGE PIN FOR 232	310	SET SCREW FOR 309		
65	HOLDER FOR OIL WICK	151	GASKET FOR 138	230	SET SCREW FOR 229	311	SET SCREW FOR 309		
66	SLIDE PLATE LEFT	152	SET SCREW FOR 154	231	HAND LEVER FOR FEED REGULATOR	312	FEED ROCK ARM		
67	SLIDE PLATE RIGHT	153	SET SCREW FOR 154	232	HAND LEVER ARM FOR FEED REGULATOR	313	FEED ROD		
68	STOPPER PIN FOR 67	154	LOWER SHAFT GEAR	233	STOP PIN FOR 237	314	MODEL PLATE (AD-332)		
69	SPRING FOR 68	155	SET SCREW FOR 157	234	SPRING FOR 233	315	GUIDE BLOCK FOR 293		
70	PRESSER BAR ONLY	156	SET SCREW FOR 157	235	FEED REGULATOR DIAL BASE	316	GUIDE BLOCK BASE		
71	WALKING FOOT COMPLETE	157	HOOK SHAFT GEAR	236	SET SCREW FOR 231	317	SET SCREW FOR 316		
72	PRESSURE REGULATOR SCREW	158	PINCH SLEEVE LOWER	237	FEED REGULATOR DIAL	318	SET SCREW FOR 315		
73	TENSION RELEASE PIN	159	PINCH SLEEVE UPPER	238	SET SCREW FOR 239	319	TUBE RETAINER		
74	GUIDE PIPE FOR 73	160	SET SCREW FOR 159	239	STITCH LENGTH INDICATOR	320	SET SCREW FOR 319		
75	NEEDLE PLATE	161	FLAT WASHER FOR 111	240	SET SCREW FOR 241	321	OIL TUBE		
76	SET SCREW FOR 75	162	TOP SHAFT BUSHING	241	FEED REGULATOR PLATE	322	OIL WICK		
77	PRESSER BAR BUSHING UPPER	163	OIL FELT FOR 162	242	FEED STOPPER REAR BLOCK	323	ACCESSORY BOX		
78	PRESSER BAR BUSHING LOWER	164	OIL FELT FOR 162			324	LARGE RUBBER BASE FOR BED		
79	SET SCREW FOR 77 & 78	165	SET SCREW FOR 162			325	SMALL RUBBER BASE FOR BED		

L-TYPE

(L = LARGE BOBBIN)

- 341 HOOK SADDLE
- 342 HOOK SADDLE COVER
- 343 TAKE UP LEVER
- 344 GUARD FOR TAKE UP LEVER
- 345 OPENER
- 346 OPENER BRACKET
- 347 OPENER ROD
- 348 HOOK SHAFT UPPER BUSHING
- 349 HOOK SHAFT LOWER BUSHING
- 350 ROTATING HOOK ASSEMBLY
- 351 BOBIN
- 352 MODEL PLATE (AD-331L)
- 353 MODEL PLATE (AD-332L)

LP-TYPE

(LP = LARGE BOBBIN & PIPING)

- 355 LAPPER BASE
- 356 LAPPER BASE KNOB
- 357 LAPPER FEEDING BLOCK
- 358 HINGE SCREW FOR 357
- 359 HINGE SCREW FOR 355
- 360 SPRING FOR 359
- 361 LAPPER COMPLETE 25M/M
- 362 SET SCREW FOR 361
- 363 FLAT WASHER FOR 362
- 364 LAPPER DRIVING ARM
- 365 SET SCREW FOR 364
- 366 LAPPER DRIVING ARM BRACKET
- 367 HINGE SCREW FOR 366
- 368 SET SCREW FOR 366
- 369 LAPPER DRIVING FORK
- 370 HINGE PIN FOR 369
- 371 STOP RING FOR 370
- 372 SET SCREW FOR 370
- 373 MODEL PLATE (AD-331LP)
- 374 MODEL PLATE (AD-332LP)