

NEWLONG

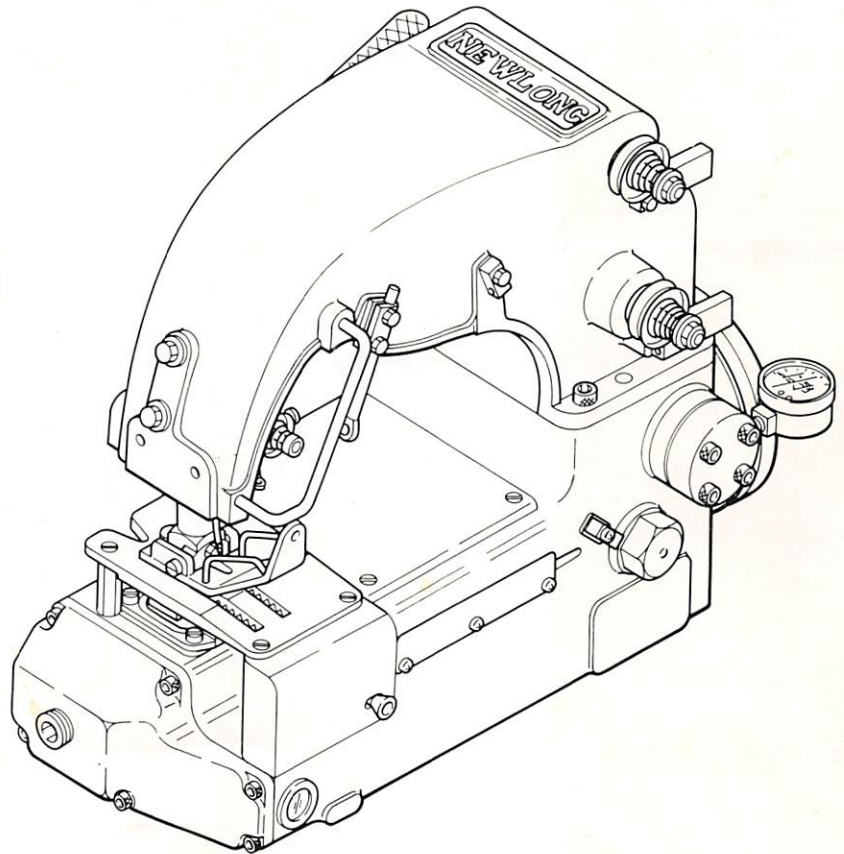
MODEL
DS-10

SEALED PRESSURIZED FILLED BAG
CLOSING MACHINE

INSTRUCTION MANUAL/PARTS LIST

FISCHBEIN 10000

MODEL
DS-10A
DS-10C



From the library of: Diamond Needle Corp



ニューロング株式会社
NEWLONG MACHINE WORKS, LTD.

No.1

Identifying and Ordering Parts

Where the construction permits, each part is stamped with its part number. On all orders, please include part number, part name and model name of machine.

Safety Rules

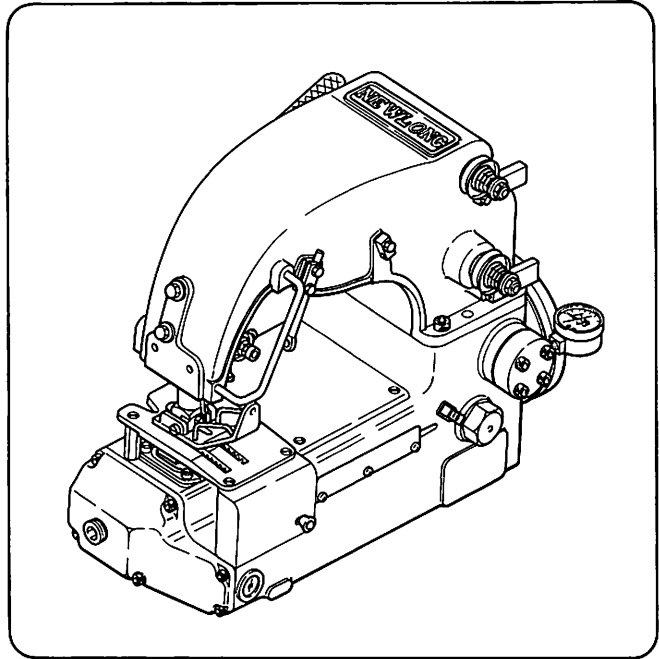
To prevent personal injury:

- All power sources to the machine must be turned off before threading, oiling, adjusting or replacing parts.
- All cover and guards must be in position before operating machine.
- Do not tamper with safety cover, guards, etc., while machine is in operation.

Maintenance

Please keep in mind to handle the machine carefully and to maintain the machine in good condition.

- Thread fuzz or dust must be cleaned with air or brush on throat plate, in the groove of feed dog or around looper after the day's work.



MODEL DS-10

CONTENTS

| | |
|--|----------|
| 1. INSTALLATION | 2 |
| 1-1 Motor Recommendations | 2 |
| 1-2 Initial Lubrication | 2 |
| 2. MAINTENANCE | 2 |
| 2-1 Oil | 2 |
| 2-2 Seals | 2 |
| 2-3 Cleaning | 2 |
| 2-4 Cold Area Operation | 3 |
| 2-5 Running After Prolonged Shot-Down | 3 |
| 2-6 Threading | 3 |
| 2-7 Tensions | 4 |
| 2-8 Needle Replacement | 4 |
| 2-9 Stitch Length | 4 |
| 2-10 Needle Thread Pull-Off | 4 |
| 2-11 Looper | 4 |
| 2-12 Looper Holder | 4 |
| 2-13 Needle Guard | 5 |
| 2-14 Presser Foot Spring Pressure | 5 |
| 2-15 Feed Dog Height | 5 |
| 3. TROUBLE SHOOTER | 5 |
| 3-1 Synchronization | 5 |
| 3-2 Oil | 5 |
| 3-3 Thread Breakage Or Skipping Stitches | 5 |
| 3-4 Failure To Chain Off After Bag Is Sewn | 5 |
| 3-5 Uneven Stitch Length Or Poor Feeding | 5 |
| 3-6 Excessive Needle Breakage | 5 |

1. INSTALLATION

1-1 Motor Recommendations

Use a 0.75 KW (1/2 HP) 1725 R.P.M. (60 Hz) motor (1420 R.P.M. for 50 Hz). The variable pulley on the sewing head permits speed adjustment. Sewing head pulley must rotate clockwise.

1-2 Initial Lubrication

The sewing head is shipped from the factory oil filled.

At the beginning of each day or shift, make sure the oil level window at the lower portion of the sewing head shows oil at the "Oil Level" line. After about 30 seconds, the oil pressure gauge should read in the normal 0.2-0.65 kgf/cm² (3-9 pound) range. While the machine is running, the oil level window will show little or no oil. Never run machine if oil pressure gauge is in the red warning area.

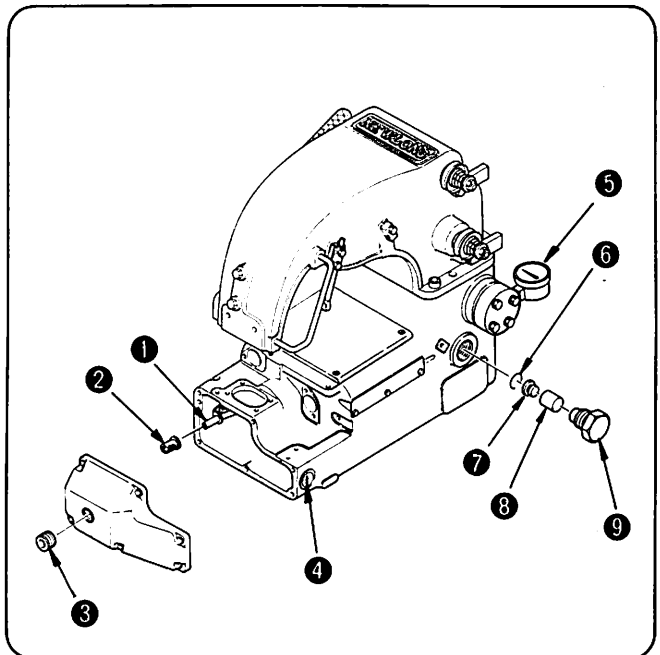
2. MAINTENANCE

2-1 Oil

Use special lubrication oil for the series DS-10 sewing head available from NEWLONG or its authorized representatives. As a substitute, any good grade of SAE 20 motor oil or its equivalent may be used. Three hundred cc (10 ounces) of oil will adequately fill the machine.

When adding or changing oil, remove breather plug and pour oil into breather plug hole. Fill until oil reaches "Oil Level" line on the oil level window. Never run machine if oil pressure gauge is in the red warning area. See Drawing 1.

To drain oil, remove magnetic drain plug and allow oil to drain. At oil change intervals, also clean oil intake filter and wipe any accumulation of particles off the magnetic drain plug. Inspect breather plug at least once a year and clean or replace foam filter element. Change oil every two months or 500 hours of operation, whichever comes first.



< Drawing 1 >

- | | | |
|-----------------------|----------------------|------------------------|
| ① Oil intake tube | ④ Oil level window | ⑦ Baffle |
| ② Oil intake filter | ⑤ Oil pressure gauge | ⑧ Breather plug filter |
| ③ Magnetic drain plug | ⑥ Snap ring | ⑨ Breather plug |

2-2 Seals

All seals must be handled with extreme caution. Any small amount of damage in handling or installation will permit leakage. When replacing a seal, saturate both it and the shaft thoroughly with oil before assembling. Never install a dry seal over a dry shaft.

2-3 Cleaning

Remove accumulations of lint from the looper area. If permitted to remain for long periods of time, these can set up a wicking action which will absorb oil from the machine. If the machine is operated around corrosive or sticky products, occasionally blow off or scrape such exposed parts as feed dog teeth, throat plate and presser foot. Also recommended is periodic hand oiling of presser foot hinge bolt and surfaces of cutting knife.

2-4 Cold Area Operation

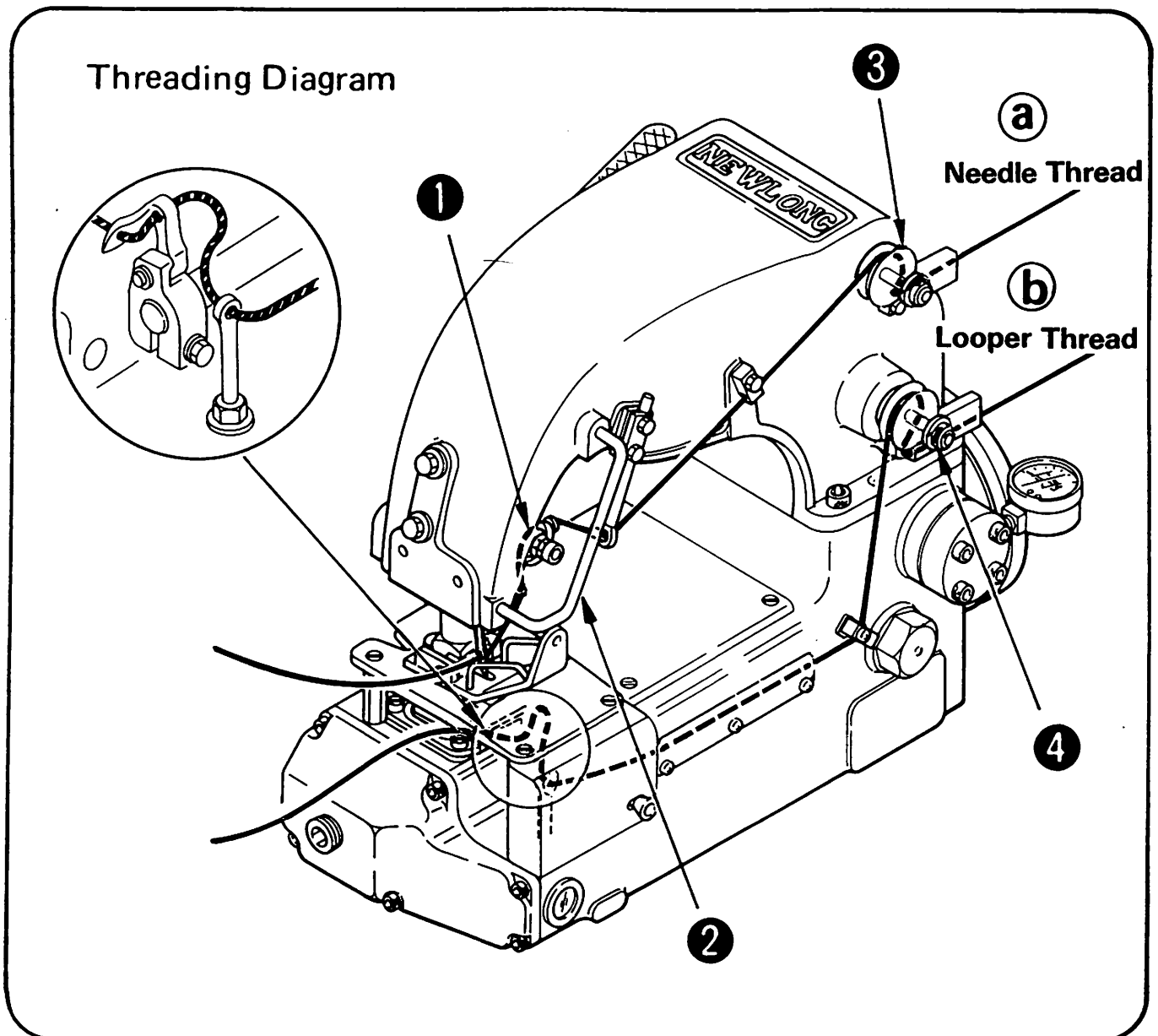
In very cold areas allow machine to warm up by running steadily for a few minutes before closing any bags. Failure to do this, especially with units running on single phase current, can result in slow starting and running of the sewing head. This causes mis-synchronization with the speed of the conveyor belt which will break thread, badly scuff tape and cause sewing problems until the sewing head and motor warm up and attain proper speed.

2-6 Threading

Follow the threading diagram below for proper threading. Be sure looper thread passes through both holes of the looper.

2-5 Running After Prolonged Shut-Down

After prolonged shut-down periods, the sewing head oil should be pumping properly and the sewing head and motor warmed up before closing any bag. This is easily accomplished by running the sewing head in short 2-3 second cycles until the oil pressure gauge reads in the normal 0.2-0.65 kgf/cm² (3-9 pound) range.



① Needle lever tension assembly ② Needle thread pull-off ③ Needle thread tension ④ Looper thread tension < Drawing 2 >

2-7 Tensions

The looper tension must be very light, barely discernible when pulling thread by hand. The needle thread tension should be very firm and put a noticeable drag on the thread. The tension assembly located on the needle lever must put only light pressure, about the same as the looper tension, on the thread.

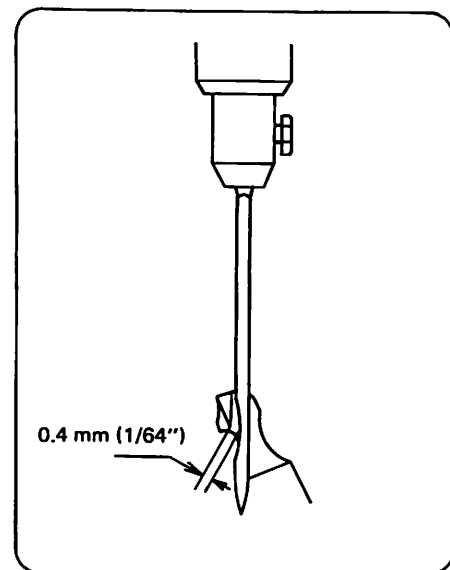
2-8 Needle Replacement

Be sure new needle is inserted into the needle chuck as far as it will go. Lock needle set screw against flat of needle shank. **Caution:** Use the small needle wrench provided with the machine. Excessive pressure on needle set screw can damage screw or needle chuck.

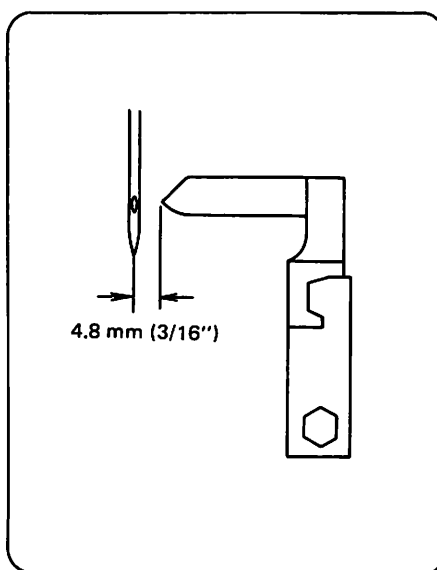
2-9 Stitch Length

To adjust stitch length, remove the magnetic drain plug on the bottom cover. Reach through the drain plug hole with a 4.8 mm. (3/16 inch) Allen wrench and loosen the socket cap screw on the feed rocker. **Do not completely remove cap screw.** To shorten stitch length, slide loosened cap screw towards the throat plate. To lengthen stitch, slide away from throat plate. Always make sure adjusting screw is securely re-tightened. For stitch length of two stitches/inch, use optional throat plate (C-10018) and feed dog (A-10079).

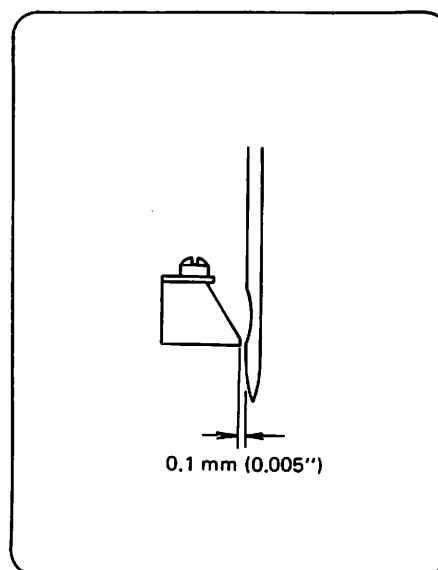
See drawing 3.



< Drawing 4 >



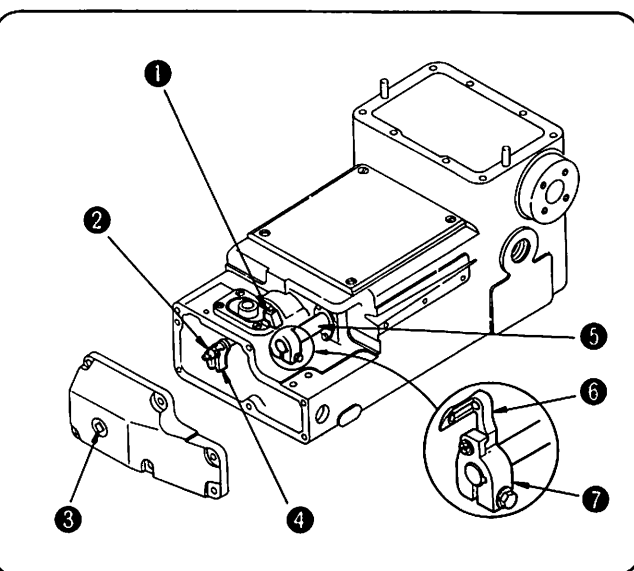
< Drawing 5 >



< Drawing 6 >

2-11 Looper

The looper timing is set at the factory and should never be altered. If the looper only is replaced and the position of the looper holder has not changed, the only adjustment necessary is to provide the proper clearance of about 0.4 mm (1/64 inch) as the looper passes the scarf of the needle. See Drawing 4 above.



- ① Needle guard ⑤ Looper shaft < Drawing 3 >
② Socket cap screw ⑥ Looper
③ Magnetic drain plug hole ⑦ Looper holder
④ Feed rocker

2-10 Needle Thread Pull-Off

This adjustment can vary with different lengths of stitch, bag thickness and type of thread. The normal setting is 30.2 mm (1-1/4 inches) from center of thread hole in pull-off to the bottom of pull-off clamp.

2-12 Looper Holder

If the looper holder has been moved and needs resetting, it must be positioned on the looper shaft so that the point of the looper is 4.8 mm (3/16 inch) from the center of the needle when the looper is at its farthest point back (towards the pulley end of machine). See Drawing 5 above.

2-13 Needle Guard

The needle guard is stationary and needs no adjustment. If it is replaced due to excessive wear or damage, it should be set so that the needle clears it by about 0.1 mm (0.005"). See Drawing 6 above.

2-14 Presser Foot Spring Pressure

To adjust the presser foot spring pressure, turn the hex adjusting screw on top of the lever housing. Turning the screw clockwise will increase the pressure, counter-clockwise will decrease pressure. The pressure has been set at the factory at about 18 kg (40 pounds), which should be adequate for most purposes.

2-15 Feed Dog Height

The teeth of the feed dog should protrude 1.6 mm (1/16") above the throat plate when at their highest point. No height adjustment of the feed dog should be necessary when replacing it. However, if the dog has been re-sharpened or is being raised to compensate for worn teeth (not recommended procedures), it will be necessary to loosen the feed dog carrier rod clamp and raise the feed dog carrier rod to restore the proper 1.6 mm (1/16") height of the feed dog teeth above the throat plate. Be sure to align the feed dog properly in the slots of the throat plate before securely locking the feed dog carrier rod.

3. TROUBLE SHOOTER

3-1 Synchronization

The sewing head must be synchronized with the conveyor belt. A model DS-10 sewing head should run about 10~15% faster than the conveyor. If a power top feed is used, it must also be synchronized with the conveyor. All conveyor models are properly synchronized at the factory, but differences in voltage between factory and customers plant might make minor adjustment necessary.

3-2 Oil

1. Check oil daily. Do not allow machine to run low. If oil pressure gauge needle does not remain above the red zone while machine is running, stop immediately.
2. At oil change intervals, remove bottom cover and clean, or if necessary, replace intake filter. See Page 2.
3. Remove accumulations of lint and dirt from looper area. If permitted to remain for long periods of time, these can set up a wicking action which will absorb oil from the machine.

3-3 Thread Breakage Or Skipping Stitches

1. Check to be sure nothing is interfering with the free passage of the thread from the cone all the way to the needle and looper.
2. Check to see that both needle and looper are threaded properly. See Drawing 2. If either are threaded improperly, it could cause the needle thread to break. Use the tweezers supplied with the machine to thread the top (or back) end of looper.
3. Check the needle thread pull-off. See Page 4. If bag is doubled over, add about 3.2 mm (1/8").
4. Check tension of both threads. See Page 4.

5. Replace needle. See Page 4.

6. Check condition of looper. If it is rough or has some nicks, replace it. See Page 4.

7. Check condition of throat plate. If it is rough or has nicks, replace it.

8. Check sharpness of feed dog. If dull, replace it. **Note:** Only the outside rows of teeth should be sharp. Do not sharpen center teeth.

3-4 Failure To Chain Off After Bag Is Sewn

1. Check items listed under thread breakage above.
2. Check presser foot pressure. It should be approximately 18 kg (40 pounds). See Page 5.

3-5 Uneven Stitch Length Or Poor Feeding

Check sharpness of feed dog and presser foot pressure.

3-6 Excessive Needle Breakage

1. Operator may be pulling bag through machine.
2. Sewing may be too close to contents of bag.
3. Check alignment of needle slot in presser foot to be sure needle does not rub.
4. Check to see that the needle chuck is parallel with side of machine.
5. Check sharpness of feed dog.
6. Check synchronization.

Memo

● 御注文上の注意事項 ORDERING PARTS

- (1) 本部品表はDS-10A、DS-10Cの機種を兼用しますので、部品をご注文の際は、個数欄を参照して下さい。
- (2) 御注文の際は、部品番号、部品名称、個数を明記下さい。
- (3) 但し図番 (Ref. No.) の記入がない部品は、単体販売できませんので、それに該当する完備部品 (組部品) をご注文下さい。

※ 本部品表は改良のため予告なく変更することがあります。

- (1) Description of each part and its stamp number is described in this parts list. Screws and nuts for parts are shown adjacent to the relevant parts. When ordering parts, describe clearly stamp number with its name of part.
- (2) Part that has no Ref. Number can not be delivered independently; always order it as an assembly.
- (3) This part list covers parts of not only DS-10A but also DS-10C. (refer to column of Quantity.)

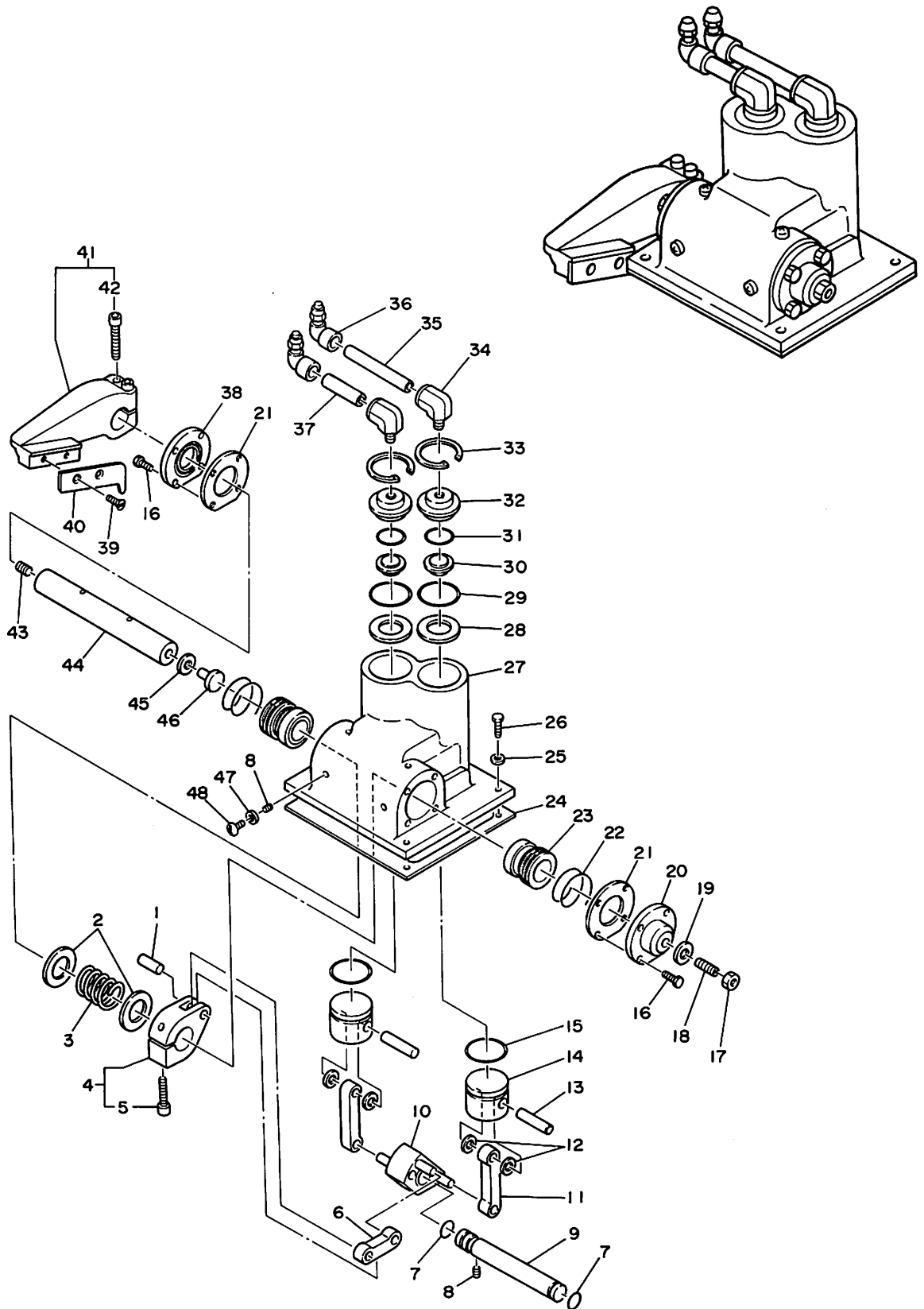
※ Information included in this part list is subject to change without prior notice.

CONTENTS 目次

| | |
|---|----|
| 01 Tape Clipper | 8 |
| テープカッター組立関係 | |
| 02 Oil Pump & Counterweight Assembly | 12 |
| オイルポンプ, ウェイトバランス組立関係 | |
| 03 Main Housing | 14 |
| ベット本体組立関係 | |
| 04 Lever Housing | 18 |
| アーム本体組立関係 | |
| 05 Needle & Presser Foot Lever Assemblies | 20 |
| 針棒, 押エ金レバー組立関係 | |
| 06 Feed Assembly | 24 |
| 送り機構組立関係 | |
| 07 Main Shaft & Knife Assembly | 26 |
| 主軸, ナイフ軸組立関係 | |
| 08 Looper Assembly | 28 |
| ルーパー組立関係 | |
| Numerical Index of Parts | 29 |
| パーツ索引 | |

01 TAPE CLIPPER PARTS

テープカッター組立関係



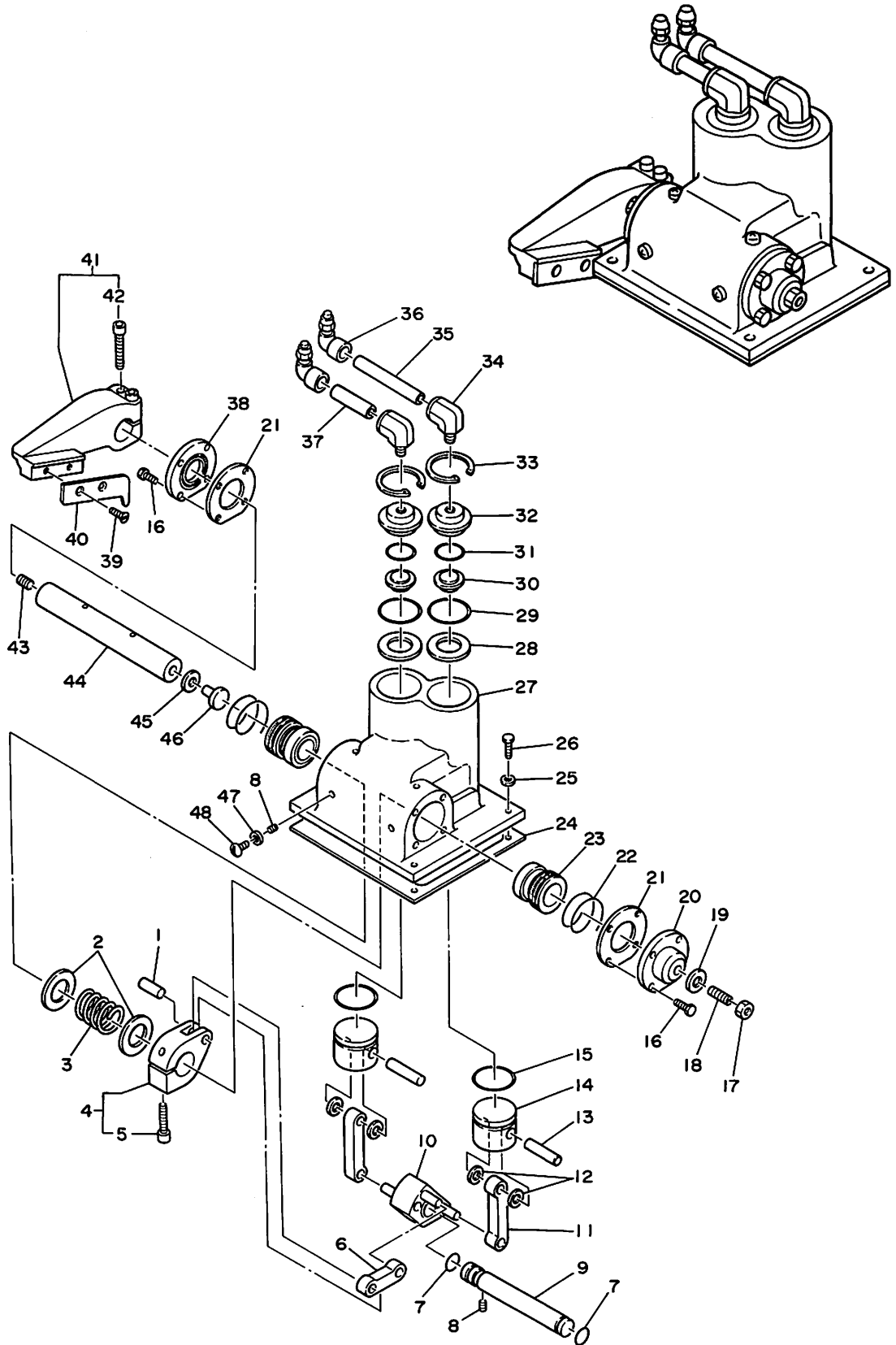
01 TAPE CLIPPER PARTS

テープカッター組立関係

| 図番 Ref. No. | 部品番号 Part No. | 部品名称 Description | | 固数Q'ty | 摘要 Remarks |
|----------------|------------------|-----------------------------------|----------------|--------|---------------|
| | | | | DS-10C | |
| 1 | P-10423 | Pin, pivot | 平行ピン | 1 | |
| 2 | T-3129 | Washer, thrust | スラストワッシャー | 2 | |
| 3 | A-10424 | Spring, compression | スプリング | 1 | |
| 4 | A-10421 | Lever, drive-cutter | カッター駆動レバー | 1 | |
| 5 | SC14201-L | Screw, socket cap | 六角穴付ボルト | 1 | |
| 6 | A-10422 | Link, drive-cutter | カッター駆動リンク | 1 | |
| 7 | P-10420 | Ring, "O"-crankshaft | "O"リング | 2 | |
| 8 | SS1032316 | Screw, set | 六角穴付止メネジ | 1 | |
| 9 | A-10419 | Crankshaft | クランクシャフト | 1 | |
| 10 | A-10404 | Assembly, crank | シリンダークランク | 1 | |
| 11 | A-10414 | Rod, connecting-piston | ピストンロッド | 2 | |
| 12 | A-10437 | Washer, rod-connecting | ワッシャー | 4 | |
| 13 | A-10415 | Pin, wrist | 平行ピン | 2 | |
| 14 | A-10412 | Piston | ピストン | 2 | |
| 15 | P-10413 | Ring, piston | "X"リング | 2 | |
| 16 | H103212 | Screw, hex HD | 六角ボルト | 8 | |
| 17 | NH1428 | Nut, hex | 六角ナット | 1 | |
| 18 | A-10440 | Screw, adjusting | ネジ | 1 | |
| 19 | WN14 | Washer, nylon | ナイロンワッシャー | 1 | |
| 20 | A-10430 | Plate, cover | フタ | 1 | |
| 21 | A-10429 | Gasket | ガスケット | 2 | |
| 22 | A-10023 | Insert thread-lever shaft bushing | スプリング | 2 | |
| 23 | A-10425 | Bushing | ナイフシャフトブッシュ | 2 | |
| 24 | A-10092 | Gasket, cover-top | オイルシート(ベアスカパー) | 1 | |
| 25 | P-10438 | Washer, compression | 平座金 | 4 | |
| 26 | H103258 | Screw, hex HD | 六角ボルト | 4 | |
| 27 | A-10405 | Housing, cutter | シリンダー本体 | 1 | |
| 28 | A-10406 | Washer, head cylinder | ライナー | 2 | |
| 29 | P-10409 | Ring, "O"-cylinder head | "O"リング | 2 | |
| 30 | A-10407 | Plate, bumper | 弁座 | 2 | |
| 31 | P-10408 | Ring, bumper | "O"リング | 2 | |
| 32 | A-10410 | Head, cylinder | シリンダーヘッド | 2 | |
| 33 | P-10411 | Ring, snap | 止メ輪 | 2 | |
| 34 | D07025 | Elbow, street | エルボー | 2 | |
| 35 | 705021 | Pipe | パイプ | 1 | |
| 36 | D07026 | Elbow, female | エルボー | 2 | |
| 37 | 705031 | Pipe | パイプ | 1 | |
| 38 | A-10403 | Assembly, seal-shaft | カッター軸シール組 | 1 | |
| 39 | F103212 | Screw, flat HD | ネジ | 2 | |
| 40 | A-10443 | Knife, moving | 揺動刃 | 2 | |
| 41 | B-10432 | Lever, knife | ナイフレバー | 1 | |
| 42 | SC1420114 | Screw, socket cap | 六角穴付ボルト | 2 | |
| 43 | P-10125 | Plug, pipe-mainshaft | プラグ(主軸) | 1 | |
| 44 | A-10426 | Shaft, knife | ナイフシャフト | 1 | |

01 TAPE CLIPPER PARTS

テープカッター組立関係



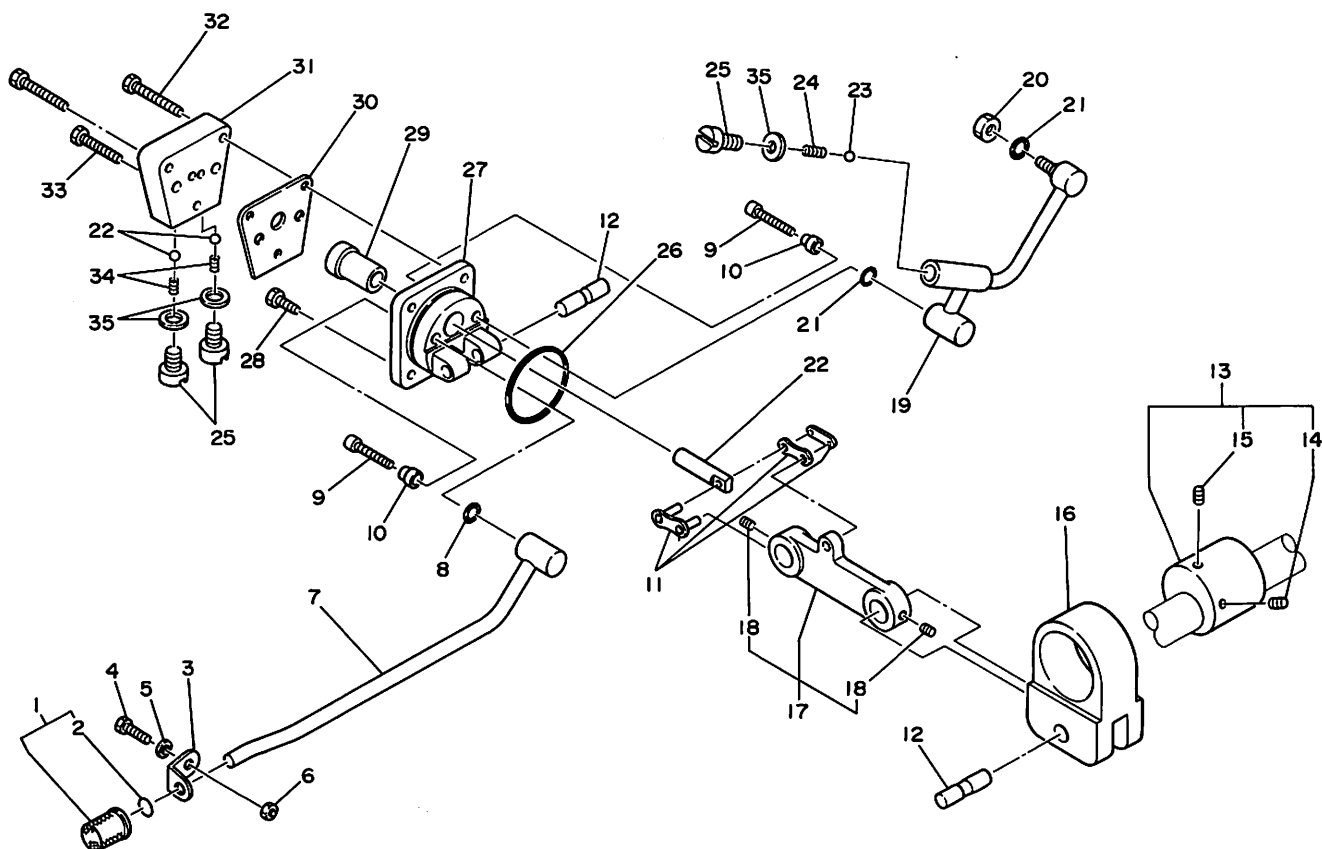
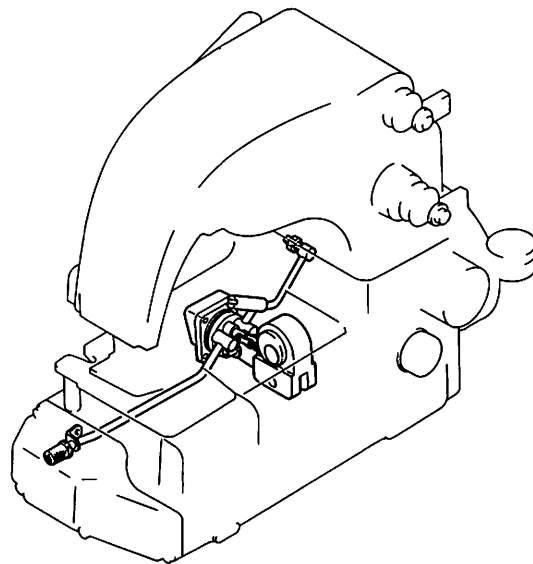
01 TAPE CLIPPER PARTS

テープカッター組立関係

| 図番 Ref. No. | 部品番号 Part No. | 部品名称 Description | 固数Q'ty | | 摘要 Remarks |
|----------------|------------------|---------------------|--------|---|---------------|
| | | | DS-10C | | |
| 45 | P-10428 | Washer, thrust | | 1 | |
| 46 | A-10427 | Shaft, thrust | | 1 | |
| 47 | SS1032316 | Screw, socket set | | 4 | |
| 48 | WN8 | Washer, nylon | | 4 | |
| 49 | B103214 | Screw, binding HD | | 4 | |

02 OIL PUMP & COUNTERWEIGHT ASSEMBLY PARTS

オイルポンプ、ウエイトバランス組立関係



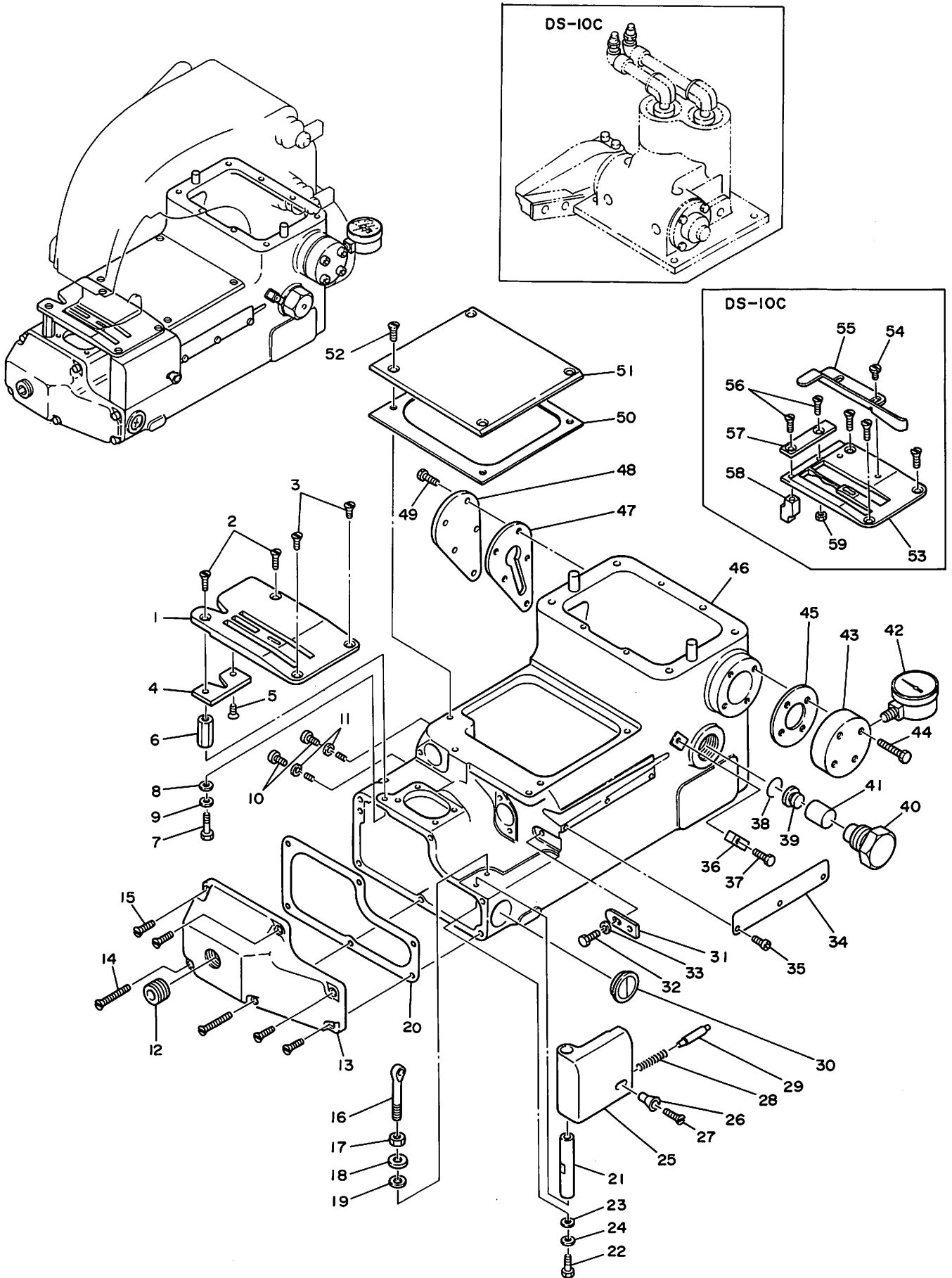
02 OIL PUMP & COUNTERWEIGHT ASSEMBLY PARTS

オイルポンプ、ウエイトバランス組立関係

| 図番 Ref. No. | 部品番号 Part No. | 部品名称 Description | | 固数 Q'ty | | 摘要 Remarks |
|----------------|------------------|-----------------------------|----------------|---------|--------|---------------|
| | | | | DS-10A | DS-10C | |
| 1 | A-10191 | Ass'y, filter-intake | フィルター組 | 1 | 1 | |
| 2 | P-10192 | Ring, "O"-intake filter | "O"リング | 1 | 1 | |
| 3 | A-10204 | Retainer, tube-intake | 給油管止メ | 1 | 1 | |
| 4 | B103212 | Screw, binding HD | ネジ | 1 | 1 | |
| 5 | WN8 | Washer, nylon | ナイロンワッシャー | 1 | 1 | |
| 6 | NJ10 | Nut | 六角ナット | 1 | 1 | |
| 7 | A-10105 | Ass'y, tube-intake | 給油管A | 1 | 1 | |
| 8 | P-10107 | Ring, "O"-intake tube | "O"リング | 1 | 1 | |
| 9 | SC63278 | Screw, socket HD cap | 六角穴付ボルト | 2 | 2 | |
| 10 | A-10178 | Insert, body-pump | ポンプカラー | 2 | 2 | |
| 11 | P-10104 | Link connecting-pump drive | 継手リンク | 1 | 1 | |
| 12 | A-10103 | Pin, pivot-pump drive | リンクピン | 2 | 2 | |
| 13 | A-10061 | Eccentric, stroke-pump | エキセンカム | 1 | 1 | (14, 15) |
| 14 | SS142038 | Screw, set | 六角穴付止メネジ | 1 | 1 | |
| 15 | SS142038CP | Screw, set-cone point | 六角穴付止メネジ | 1 | 1 | |
| 16 | A-10101 | Counterweight & Pump Drive | バランスウエイト | 1 | 1 | |
| 17 | A-10102 | Link, control-pump drive | リンク | 1 | 1 | (18) |
| 18 | SS1032316 | Screw, set | 六角穴付止メネジ | 2 | 2 | |
| 19 | A-10106 | Ass'y, tube-pressure | 給油管B | 1 | 1 | |
| 20 | NH1420 | Nut, hex | 六角ナット | 1 | 1 | |
| 21 | P-10107 | Ring, "O"-tube terminal | "O"リング | 2 | 2 | |
| 22 | A-10169 | Piston, pump | ピストン | 1 | 1 | |
| 23 | P-10051 | Ball, valve | ボール(銅球) | 3 | 3 | |
| 24 | A-10130 | Spring, relief-oil pressure | スプリング(リリーフバルブ) | 1 | 1 | |
| 25 | A-10053 | Plug, spring-valve | プラグ | 3 | 3 | |
| 26 | P-10084 | Ring, "O" | "O"リング | 1 | 1 | |
| 27 | B-10167 | Body, pump | ポンプ本体 | 1 | 1 | |
| 28 | H103212 | Screw, hex HD | 六角ボルト | 2 | 2 | |
| 29 | A-10168 | Cylinder, pump | シリンダー | 1 | 1 | |
| 30 | A-10049 | Gasket, block-valve | オイルシート | 1 | 1 | |
| 31 | B-10050 | Block, valve | バルブ本体 | 1 | 1 | |
| 32 | H1032114 | Screw, hex HD (long) | 六角ボルト | 2 | 2 | |
| 33 | H10321 | Screw, hex HD (short) | 六角ボルト | 1 | 1 | |
| 34 | A-10127 | Spring, block-valve | バルブスプリング | 2 | 2 | |
| 35 | A-10052 | Seal, washer-valve plug | ナイロンワッシャー | 2 | 2 | |

03 MAIN HOUSING PARTS

ベッド本体組立関係



From the library of: Diamond Needle Corp

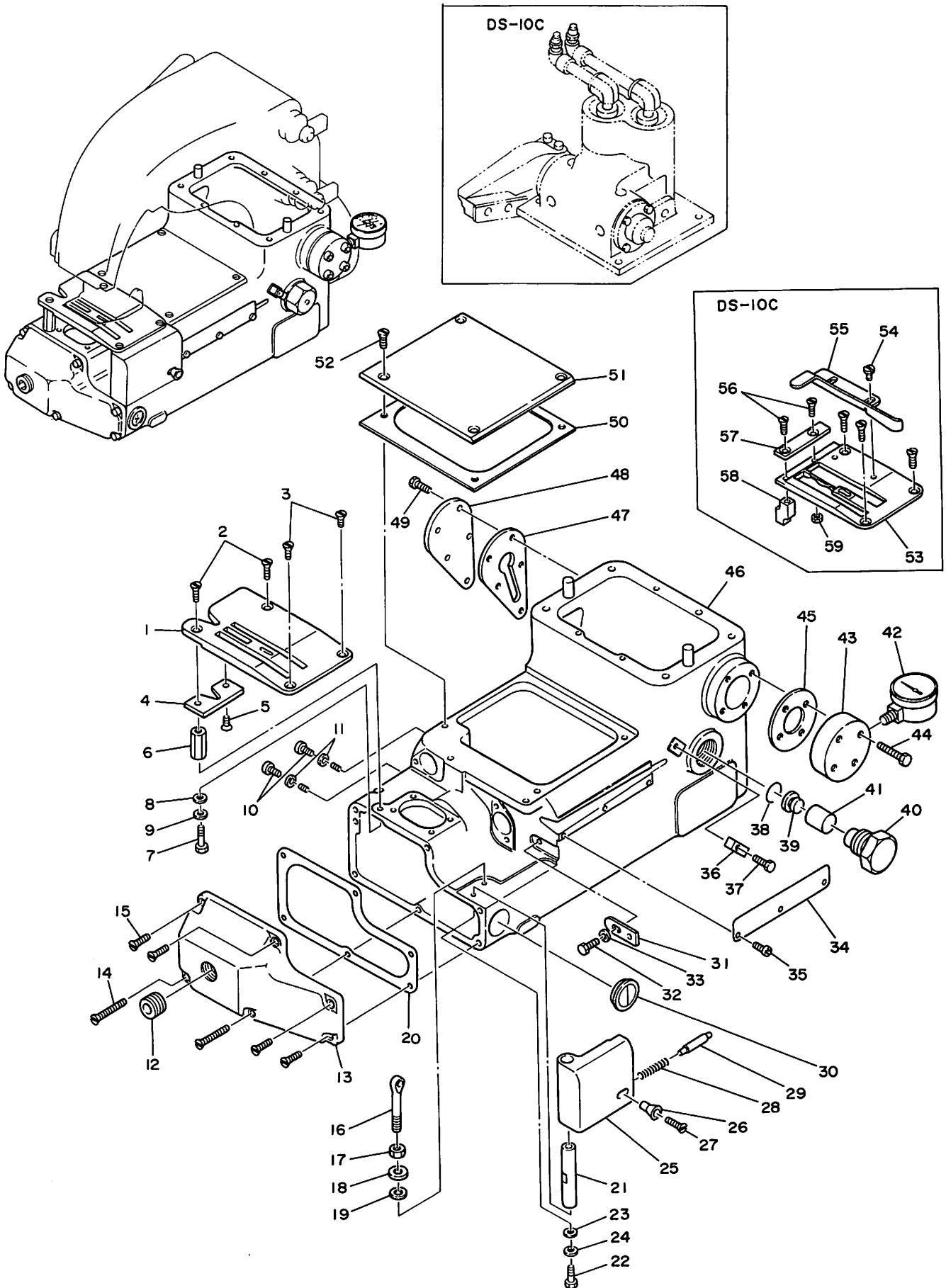
03 MAIN HOUSING PARTS

ベッド本体組立関係

| 図番 Ref. No. | 部品番号 Part No. | 部品名称 Description | 固数 Q'ty | | 摘要 Remarks |
|----------------|------------------|-------------------------------------|---------------|--------|-----------------------|
| | | | DS-10A | DS-10C | |
| 1 | C-10017 | Plate, throat | 針板 | 1 | Special Order (特注) |
| | C-10018 | Plate,throat(Long Stitch) | 針板 | (1) | |
| 2 | F103258 | Screw, flat HD (long) | ネジ | 2 | 1 |
| 3 | F103238 | Screw, flat HD (short) | ネジ | 2 | 2 |
| 4 | A-10091 | Knife, stationary | ナイフ B | 1 | — |
| 5 | F83214 | Screw, flat HD | ネジ | 1 | — |
| 6 | A-10015 | Post, short-throat plate | 支柱 (ショート) | 1 | — |
| 7 | H103212 | Screw, hex HD | 六角ボルト | 1 | 1 |
| 8 | WN8 | Washer, nylon | ナイロンワッシャー | 1 | 1 |
| 9 | D208 | Washer | 平座金 | 1 | 1 |
| 10 | B103214 | Screw, binding HD | ネジ | 2 | 2 |
| 11 | WN8 | Washer | ナイロンワッシャー | 2 | 2 |
| 12 | P-10111 | Plug, drain-magnetic | ドレンプラグ | 1 | 1 |
| 13 | B-10022 | Cover, bottom | 下面カバー | 1 | 1 |
| 14 | F1032114 | Screw, flat HD (long) | ネジ | 2 | 2 |
| 15 | F103258 | Screw, flat HD (short) | ネジ | 4 | 4 |
| 16 | A-10170 | Pull-Off-Looper Thread | 下糸ガイド | 1 | 1 |
| 17 | NH1420 | Nut, hex | 六角ナット | 1 | 1 |
| 18 | WF14 | Washer | 平座金 | 1 | 1 |
| 19 | WN14 | Washer-Nylon | ナイロンワッシャー | 1 | 1 |
| 20 | A-10093 | Gasket, cover-bottom | オイルシート(下面カバー) | 1 | 1 |
| 21 | A-10016 | Post, long-throat plate | 支柱 (ロング) | 1 | 1 |
| 22 | H103212 | Screw, hex HD | 六角ボルト | 1 | 1 |
| 23 | WN8 | Washer-Nylon | ナイロンワッシャー | 1 | 1 |
| 24 | D208 | Washer | 平座金 | 1 | 1 |
| 25 | A-10005 | Door, looper | ルーバーカバー | 1 | — |
| 26 | A-10021 | Knob, latch-looper door | ノブ | 1 | — |
| 27 | F63234 | Screw, flat HD | ネジ | 1 | — |
| 28 | A-10019 | Spring, latch-looper door | スプリング | 1 | — |
| 29 | A-10020 | Latch, door-looper | ラッチ | 1 | — |
| 30 | D05003 | Window, oil level | オイルレベル | 1 | 1 |
| 31 | A-10097 | Plate, latch-looper door | カバー止め | 1 | 1 |
| 32 | H103212 | Screw, hex HD | 六角ボルト | 1 | 1 |
| 33 | D208 | Washer | 平座金 | 1 | 1 |
| 34 | A-10098 | Cover, groove-thread | 下糸カバー | 1 | 1 |
| 35 | B632316 | Screw, binding HD | 六角ボルト | 3 | 3 |
| 36 | A-10164 | Eyelet, thread-short | 糸ガイド (小) | 1 | 1 |
| 37 | H103234 | Screw, hex HD | 六角ボルト | 1 | 1 |
| 38 | A-10134 | Ring, snap-breather baffle retainer | スナップリング | 1 | 1 |
| 39 | A-10179 | Baffle, plug-breather | 調整板 | 1 | 1 |
| 40 | A-10116 | Ass'y, plug-breather | エアブリーザ本体 | 1 | 1 |
| 41 | A-10121 | Filter, plug-breather | フィルター | 1 | 1 |
| 42 | P-10227 | Gauge, oil pressure | 油圧ゲージ | 1 | 1 |
| 43 | P-10226 | Adapter, gauge-oil pressure | アダプター | 1 | 1 |
| 44 | H10321 | Screw, hex HD | 六角ボルト | 4 | 4 |
| 45 | A-10094 | Gasket, main shaft seal | オイルシート | 1 | 1 |

03 MAIN HOUSING PARTS

ベッド本体組立関係



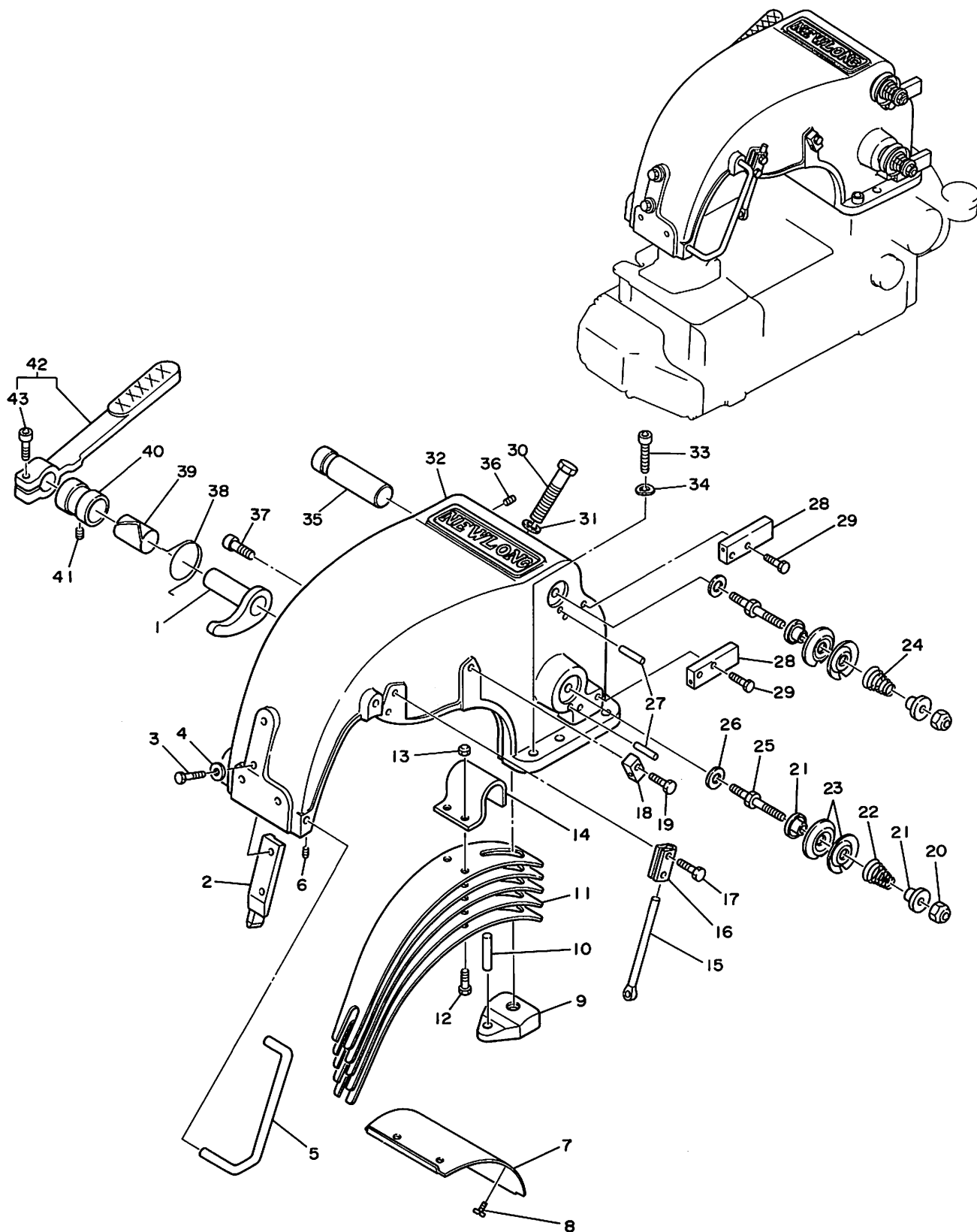
03 MAIN HOUSING PARTS

ベッド本体組立関係

| 図番 Ref. No. | 部品番号 Part No. | 部品名称 Description | 固数 Q'ty | | 摘要 Remarks |
|----------------|------------------|----------------------------------|---------|--------|---------------|
| | | | DS-10A | DS-10C | |
| 46 | D-10001 | Housing, main ベッド | 1 | 1 | |
| 47 | A-10095 | Gasket, cover-manifold オイルシート | 1 | 1 | |
| 48 | A-10100 | Cover, manifold マニホールドカバー | 1 | 1 | |
| 49 | H103212 | Screw, hex HD 六角ボルト | 5 | 5 | |
| 50 | A-10092 | Gasket, cover-top オイルシート | 1 | — | |
| 51 | A-10014 | Plate, cover-top ベースカバー | 1 | 1 | |
| 52 | F103238 | Screw, flat HD ネジ | 4 | 4 | |
| 53 | B-10485 | Plate, throat 針板 | — | 1 | |
| 54 | B103214 | Screw, binding HD ネジ | — | 2 | |
| 55 | A-10449 | Fence 定規 | — | 1 | |
| 56 | F83212 | Screw, flat HD ネジ | — | 2 | |
| 57 | A-10446 | Knife, bed 固定刃 | — | 1 | |
| 58 | A-10434 | Post, offset 短支柱 | — | 1 | |
| 59 | NH832 | Nut, hex ナット | — | 1 | |

04 LEVERS HOUSING PARTS

アーム本体組立関係



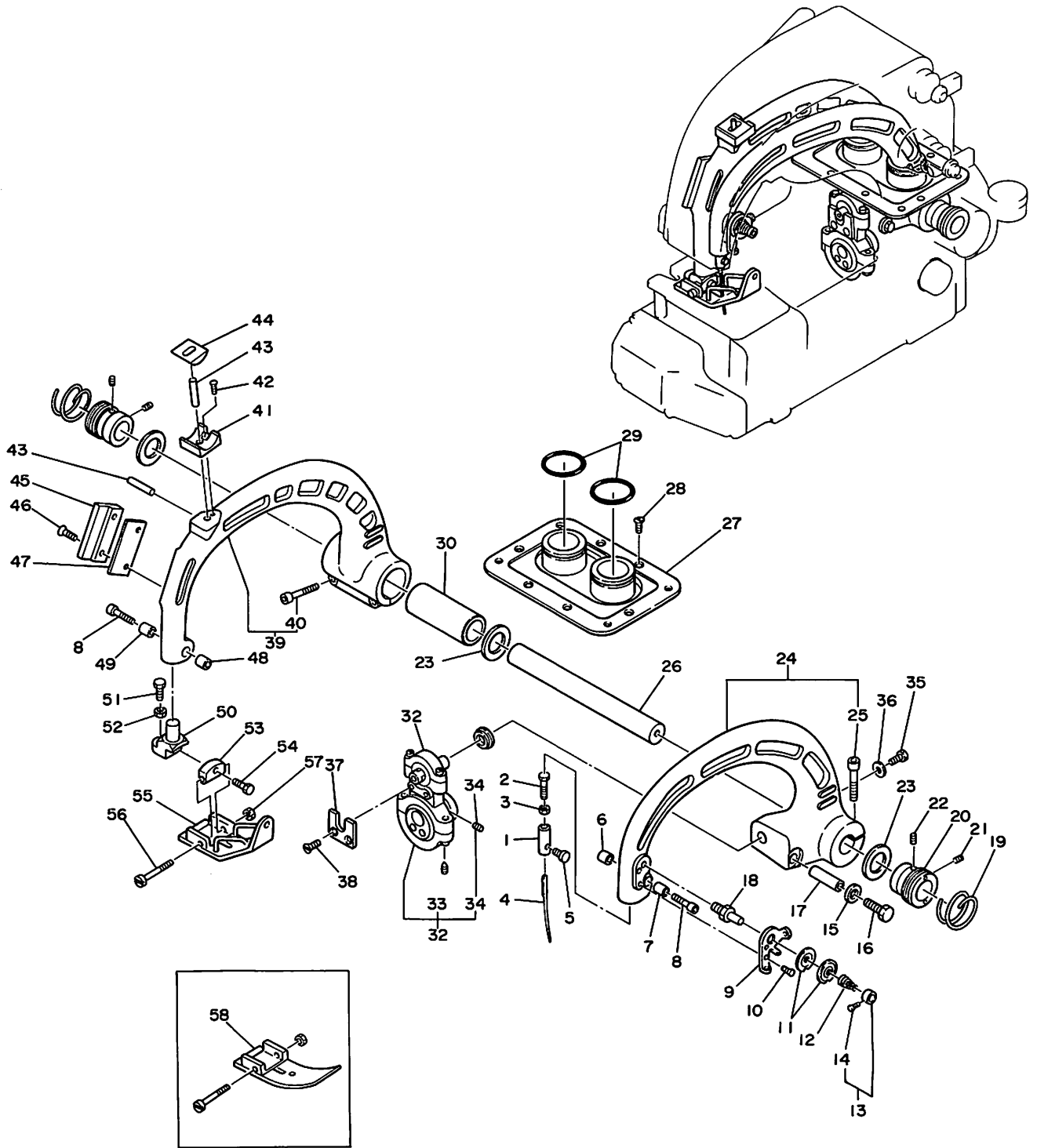
04 LEVERS HOUSING PARTS

アーム本体組立関係

| 図番 Ref. No. | 部品番号 Part No. | 部品名称 Description | | 固数 Q'ty | | 摘 要 Remarks |
|----------------|------------------|-----------------------------------|------------|---------|--------|----------------|
| | | | | DS-10A | DS-10C | |
| 1 | A-10142 | Cam, lifter-presser foot | 押エ揚ゲカム | 1 | | |
| 2 | A-10161 | Guide, lever-presser foot | 押エ揚ゲガイド | 1 | | |
| 3 | H103278 | Screw, hex HD | 六角ボルト | 2 | | |
| 4 | WF10 | Washer | 平座金 | 2 | | |
| 5 | A-10188 | Guard, tension-needle | ガード | 1 | | |
| 6 | SS1032516 | Screw, set | 六角穴付止メネジ | 2 | | |
| 7 | B-10123 | Cover, guard-levers | アームカバー | 1 | | |
| 8 | B103238 | Screw, binding HD | ネジ | 2 | | |
| 9 | A-10146 | Plate, presser foot spring-tapped | 板バネ受ケ金 | 1 | | |
| 10 | P-10013 | Pin, roll | スプリングピン | 1 | | |
| 11 | B-10145 | Spring, presser foot | 板バネ | 5 | | |
| 12 | H103234 | Screw, hex HD | 六角ボルト | 2 | | |
| 13 | 1-178 | Nut, lock | フレクスロックナット | 2 | | |
| 14 | A-10144 | Clamp, spring-presser foot | 板バネ止メ | 1 | | |
| 15 | A-10171 | Pull-off, needle thread | 上糸調節 | 1 | | |
| 16 | A-10172 | Clamp, needle thread pull-off | 上糸調節止メ | 1 | | |
| 17 | H103234 | Screw, hex HD | 六角ボルト | 2 | | |
| 18 | A-10164 | Eyelet, thread-short | 糸ガイド(小) | 1 | | |
| 19 | H103234 | Screw, hex HD | 六角ボルト | 1 | | |
| 20 | NH1428L | Nut | ナイロンナット | 2 | | |
| 21 | A-10114 | Sleeve, tension | スリーブ | 4 | | |
| 22 | A-10008 | Spring, tension-looper thread | 下糸調子スプリング | 1 | | |
| 23 | A-10120 | Disc, tension-large | 糸調子皿(大) | 4 | | |
| 24 | A-10007 | Spring, tension-needle thread | 上糸調子スプリング | 1 | | |
| 25 | A-10115 | Stud, tension | 糸調子芯棒(下糸) | 2 | | |
| 26 | D-120 | Washer, lock | バネ座金 | 2 | | |
| 27 | P-10010 | Pin, retaining-tension disc | スプリングピン | 2 | | |
| 28 | A-10165 | Eyelet, thread-long | 糸ガイド(大) | 2 | | |
| 29 | H103234 | Screw, hex HD | 六角ボルト | 4 | | |
| 30 | H3824134 | Screw, adjusting | 六角ボルト | 1 | | |
| 31 | WF38 | Washer | 平座金 | 1 | | |
| 32 | D-10002 | Housing, levers | アーム | 1 | | |
| 33 | SC516181 | Screw, socket HD cap | 六角穴付ボルト | 4 | | |
| 34 | WS516 | Washer, spring | スプリングワッシャー | 4 | | |
| 35 | A-10143 | Shaft, spring-presser foot | 板バネ軸 | 1 | | |
| 36 | SS142038 | Screw, set | 六角穴付止メネジ | 1 | | |
| 37 | SC5161858 | Screw, stop-lifter lever | 六角穴付ボルト | 1 | | |
| 38 | A-10187 | Spring, lifter lever | 押エ揚ゲスプリング | 1 | | |
| 39 | A-10186 | Liner, bushing-lifter lever | テフロンシート | 1 | | |
| 40 | A-10139 | Bushing, lifter-presser foot | レバーシール | 1 | | |
| 41 | SS142014 | Screw, set | 六角穴付止メネジ | 1 | | |
| 42 | B-10141 | Lever, lifter-presser foot | 押エ揚ゲレバー | 1 | (43) | |
| 43 | SC142034 | Screw, socket HD cap | 六角穴付ボルト | 1 | | |

05 NEEDLE & PRESSER FOOT LEVER ASSEMBLIES PARTS

針棒，押エ金レバー組立関係



From the library of: Diamond Needle Corp

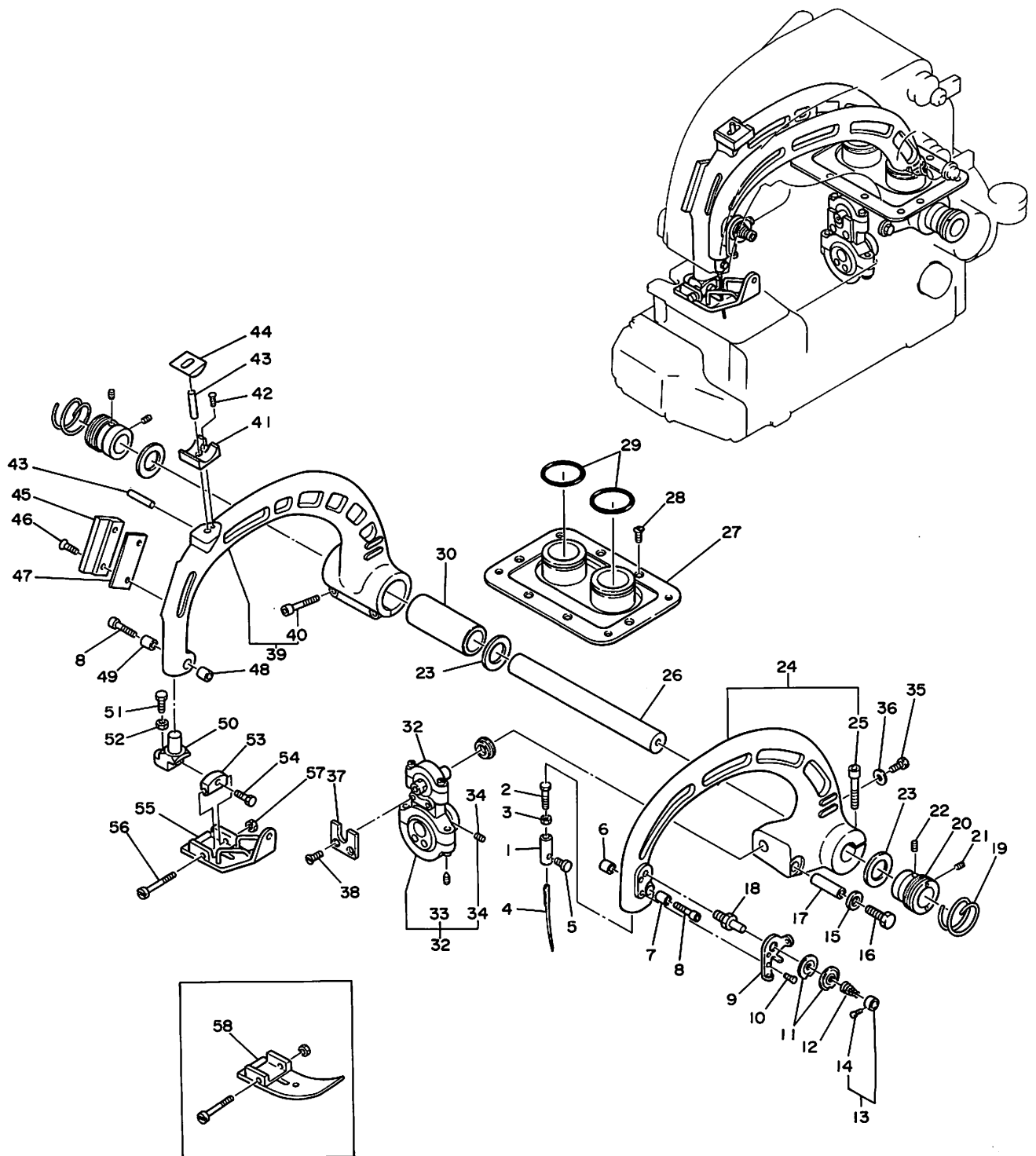
05 NEEDLE & PRESSER FOOT LEVER ASSEMBLIES PARTS

針棒, 押エ金レバー組立関係

| 図番 Ref. No. | 部品番号 Part No. | 部品名称 Description | | 固数 Q'ty | | 摘 要 Remarks |
|----------------|------------------|-------------------------------------|----------------|----------|----------|-----------------|
| | | | | DS-10A | DS-10C | |
| 1 | A-10031 | Chuck, needle | 針ホルダー | 1 | 1 | |
| 2 | H103234 | Screw, hex HD | 六角ボルト | 1 | 1 | |
| 3 | NJ10 | Nut, hex HD | 六角ナット | 1 | 1 | |
| 4 | C-100-S | Needle | 針 | 1 | 1 | |
| 5 | A-10011 | Screw, clamp-needle | 針止メネジ | 1 | 1 | |
| 6 | A-10212 | Plug, clamp-tapped (needle lever) | 針ホルダークランプ(B) | 1 | 1 | |
| 7 | A-10211 | Plug, clamp drilled (needle lever) | 針ホルダークランプ(A) | 1 | 1 | |
| 8 | SC63234 | Screw, socket HD cap | 六角穴付ボルト | 1 | 1 | |
| 9 | A-10166 | Guide, thread-needle lever | 上糸ガイド | 1 | 1 | |
| 10 | F54038 | Screw, flat HD | ネジ | 2 | 2 | |
| 11 | A-10119 | Disc., tension-small | 糸調子皿(小) | 2 | 2 | |
| 12 | A-10009 | Spring, tension-needle lever | 上糸調子スプリング(小) | 1 | 1 | |
| 13 | A-10181 | Collar, tension-needle lever | 上糸調子カラー | 1 | 1 | (14) |
| 14 | B632316 | Screw, binding HD | ネジ | 1 | 1 | |
| 15 | A-10231 | Washer, heavy-needle lever | 座金 | 1 | 1 | |
| 16 | H103212 | Screw, hex HD | 六角ボルト | 1 | 1 | |
| 17 | A-10232 | Rod, clamp-needle lever | クランプロッド | 1 | 1 | |
| 18 | A-10113 | Stud, tension-needle lever | 糸調子芯棒(上糸) | 1 | 1 | |
| 19 | A-10023 | Insert, thread-levers shaft bushing | スプリング | 2 | 2 | |
| 20 | A-10025 | Bushing, shaft-levers | 針棒レバーシャフトブッシュ | 2 | 2 | |
| 21 | SS1032316 | Screw, set (short) | 六角穴付止メネジ | 2 | 2 | |
| 22 | SS103238 | Screw, set (long) | 六角穴付止メネジ | 2 | 2 | |
| 23 | T3129 | Washer, thrust | スラストベアリングカラー | 3 | 3 | |
| 24 | C-10003 | Lever, needle | 針棒レバー | 1 | 1 | (25) |
| 25 | SC1420114 | Screw, socket HD cap | 六角穴付ボルト | 2 | 2 | |
| 26 | A-10026 | Shaft, levers | レバー軸 | 1 | 1 | |
| 27 | B-10137 | Seal, levers | レバーシール | 1 | 1 | |
| 28 | F103238 | Screw, flat HD | ネジ | 4 | 4 | |
| 29 | A-10128 | Spring, garter-levers seal | スプリングレバーシール | 2 | 2 | |
| 30 | A-10028 | Bushing, lever-presser foot | 押エ棒レバーブッシュ | 1 | 1 | |
| 31 | A-10159 | Spacer, stud-ball | スペーサー | 1 | 1 | |
| 32 | B-10047 | Rod, connecting-needle drive | 立ロッド組 | 1 | 1 | (33, 34) |
| 33 | SS142038CP | Screw, set-cone point | 六角穴付止メネジ | 1 | 1 | |
| 34 | SS142014 | Screw, set | 六角穴付止メネジ | 1 | 1 | |
| 35 | H103238 | Screw, hex HD | 六角ボルト | 1 | 1 | |
| 36 | WS10 | Washer, spring | バネ座金 | 1 | 1 | |
| 37 | A-10048 | Restrainer, rod-connecting | ボールガイド | 1 | 1 | |
| 38 | F103238 | Screw, flat HD | ネジ | 2 | 2 | |
| 39 | C-10004 | Lever, presser foot | 押エ金レバー | 1 | 1 | (40) |
| 40 | SC1420114 | Screw, socket HD cap | 六角穴付ボルト | 2 | 2 | |
| 41 | A-10189 | Cradle, pad-presser foot spring | 板バネ受ケ台 | 1 | 1 | |
| 42 | F63212 | Screw, flat HD | ネジ | 1 | 1 | |
| 43 | P-10193 | Pin, roll | スプリングピン | 2 | 2 | |
| 44 | A-10190 | Pad, spring-presser foot | 板バネ受ケ | 1 | 1 | |
| 45 | A-10163 | Clamp, bearing-sheet | シート止メ | 1 | 1 | |

05 NEEDLE & PRESSER FOOT LEVER ASSEMBLIES PARTS

針棒，押エ金レバー組立関係



From the library of: Diamond Needle Corp

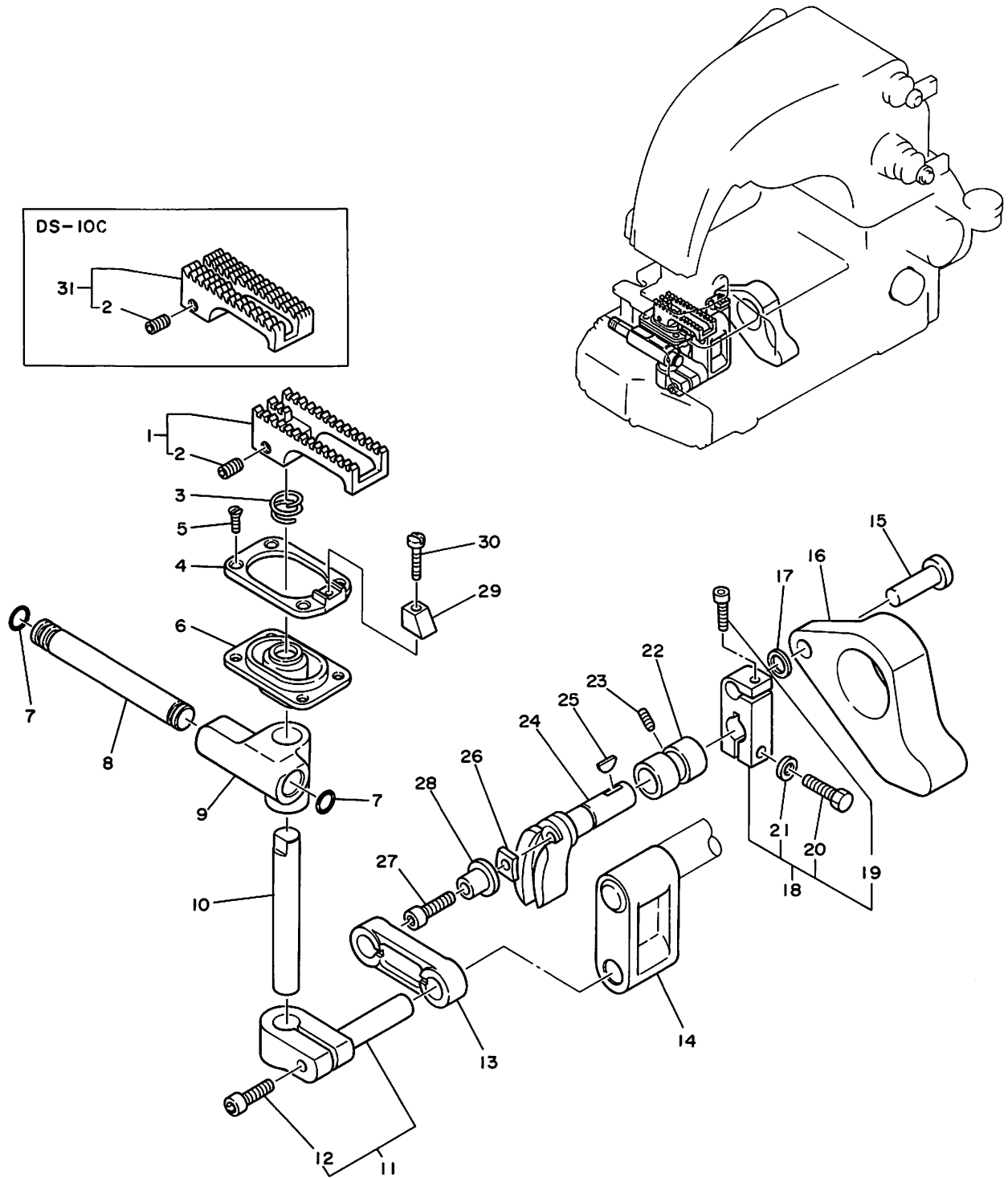
05 NEEDLE & PRESSER FOOT LEVER ASSEMBLIES PARTS

針棒，押エ金レバー組立関係

| 図番 Ref. No. | 部品番号 Part No. | 部品名称 Description | 固数 Q'ty | | 摘要 Remarks |
|----------------|------------------|--|---------|--------|---------------|
| | | | DS-10A | DS-10C | |
| 46 | F103258 | Screw, flat HD ネジ | 2 | 2 | |
| 47 | A-10162 | Sheet, bearing-presser foot lever guide シート | 1 | 1 | |
| 48 | A-10214 | Plug, clamp-tapped (presser foot) 押エ棒ホルダー クランプ(B) | 1 | 1 | |
| 49 | A-10213 | Plug, clamp-drilled (presser foot) 押エ棒ホルダー クランプ(A) | 1 | 1 | |
| 50 | A-10155 | Shank, presser foot 押エ金ホルダーA | 1 | 1 | |
| 51 | H103234 | Screw, hex HD 六角ボルト | 1 | 1 | |
| 52 | NJ10 | Nut, hex 六角ナット | 1 | 1 | |
| 53 | A-10156 | Block, hinge-presser foot 押エ金ホルダーB | 1 | 1 | |
| 54 | H103238R | Screw, hex HD 六角ボルト | 1 | 1 | |
| 55 | A-10185 | Presser Foot 押エ金 | 1 | - | |
| 56 | A-10182 | Bolt, hinging-presser foot 押エ金レンジピン | 1 | 1 | |
| 57 | NJ10 | Nut 六角ナット | 1 | 1 | |
| 58 | A-10484 | Presser foot 押エ金 | - | 1 | |

06 FEED ASSEMBLY PARTS

送り機構組立関係



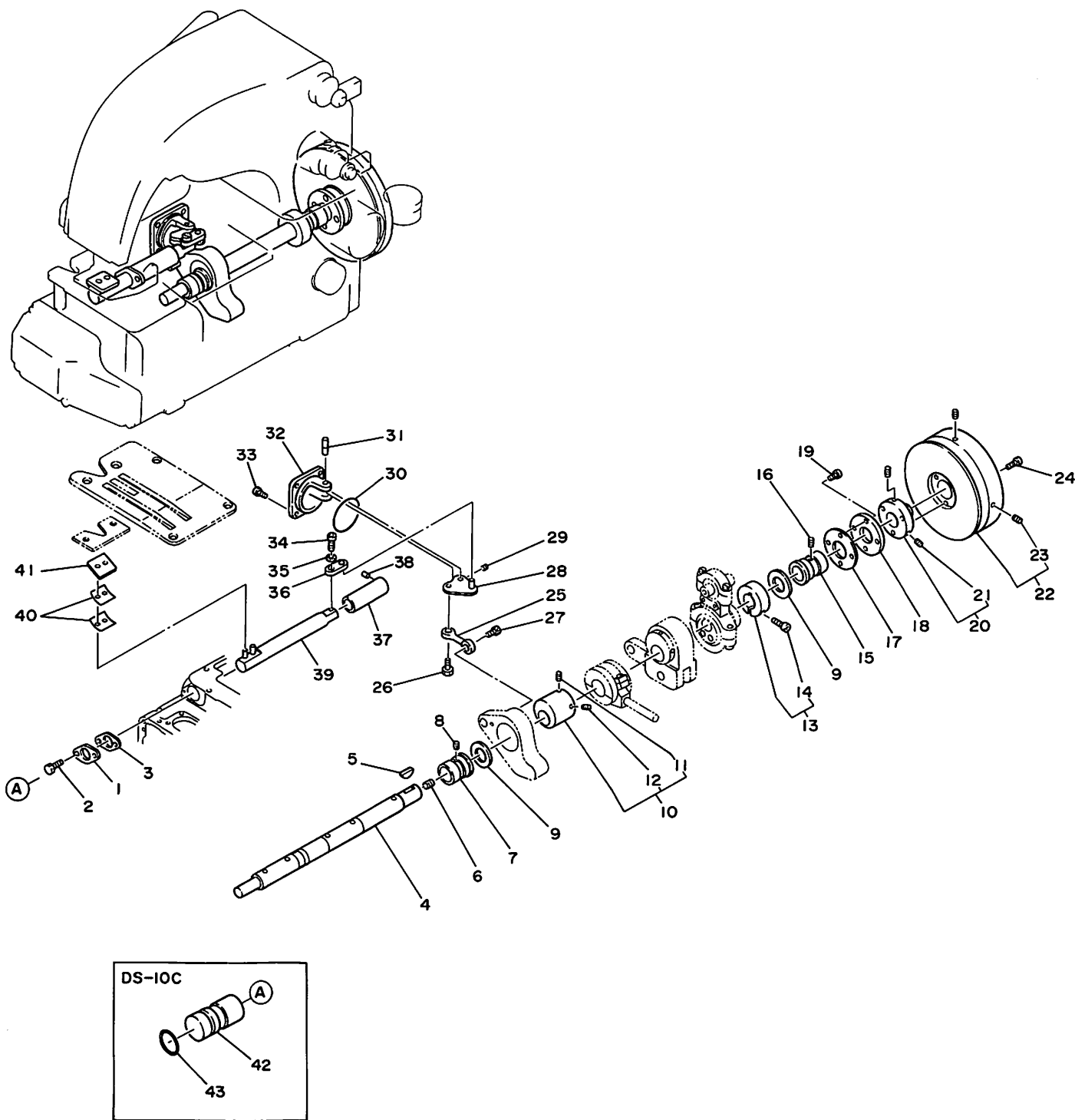
06 FEED ASSEMBLY PARTS

送り機構組立関係

| 図番 Ref. No. | 部品番号 Part No. | 部品名称 Description | 固数 Q'ty | | 摘要 Remarks | |
|----------------|------------------|-------------------------------------|----------------|--------|---------------|---------------------------|
| | | | DS-10A | DS-10C | | |
| 1 | A-10078 | Dog, feed | 送り金 | 1 | - | (2) |
| | A-10079 | Dog, feed (Long Stitch) | 送り金 | (1) | - | (2) |
| 2 | SS1032516 | Screw, set | 六角穴付止メネジ | 1 | 1 | |
| 3 | A-10124 | Ring, garter-feed dog seal | スプリング(送り土台シール) | 1 | 1 | |
| 4 | A-10177 | Holder, guard-needle | 針ガイドホルダー | 1 | 1 | |
| 5 | F103238 | Screw, flat HD | ネジ | 4 | 4 | |
| 6 | B-10077 | Seal, dog-feed | 送り土台シール | 1 | 1 | |
| 7 | P-10075 | Ring, "O" | "O"リング | 2 | 2 | |
| 8 | A-10074 | Rod, slide-feed | スラスト棒 | 1 | 1 | |
| 9 | A-10073 | Slide, feed | 摺動台 | 1 | 1 | |
| 10 | A-10072 | Rod, carrier-feed dog | 送り土台ピン | 1 | 1 | |
| 11 | A-10070 | Clamp, rod-feed dog carrier | 送り土台 | 1 | 1 | (13) |
| 12 | SC142078 | Screw, socket HD | 六角穴付ボルト | 1 | 1 | |
| 13 | A-10069 | Link, stroke-feed | 送りリンク | 1 | 1 | |
| 14 | A-10071 | Link, lift-feed | 送り上下リンク | 1 | 1 | |
| 15 | A-10064 | Pin, rod-feed stroke connecting | レバーピン | 1 | 1 | |
| 16 | A-10062 | Rod, connecting-primary feed stroke | 送りロッド | 1 | 1 | |
| 17 | A-10215 | Washer, thrust | スラストワッシャー | 1 | 1 | |
| 18 | A-10063 | Lever, pin-feed rocker | 送り元土台レバー | 1 | 1 | (19, 20, 21) |
| 19 | SC54012 | Screw, socket HD cap | 六角穴付ボルト | 1 | 1 | |
| 20 | H103258 | Screw, hex HD | 六角ボルト | 1 | 1 | |
| 21 | D208 | Washer | 平座金 | 1 | 1 | |
| 22 | A-10109 | Bushing, shaft-feed rocker | 送り元ブッシュ | 1 | 1 | |
| 23 | SS1032516 | Screw, set | 六角穴付止メネジ | 1 | 1 | |
| 24 | A-10066 | Lever, slotted-feed rocker | 送り台 | 1 | 1 | |
| 25 | B1035 | Key | 半月キー | 1 | 1 | |
| 26 | A-10067 | Nut, pivot-feed stroke adjusting | 送り調節軸ナット | 1 | 1 | |
| 27 | SC142878 | Screw, socket HD cap | 六角穴付ボルト | 1 | 1 | |
| 28 | A-10068 | Pivot, adjusting-feed stroke | 送り調節軸スリーブ | 1 | 1 | |
| 29 | A-10174 | Guard, needle | 針ガード | 1 | 1 | |
| 30 | P540916 | Screw, pan HD. | ネジ | 1 | 1 | |
| 31 | A-10486 | Feed dog | 送り金 | - | 1 | (2) Special Order (特注) |

07 MAIN SHAFT & KNIFE ASSEMBLY PARTS

主軸, ナイフ軸組立関係



From the library of: Diamond Needle Corp

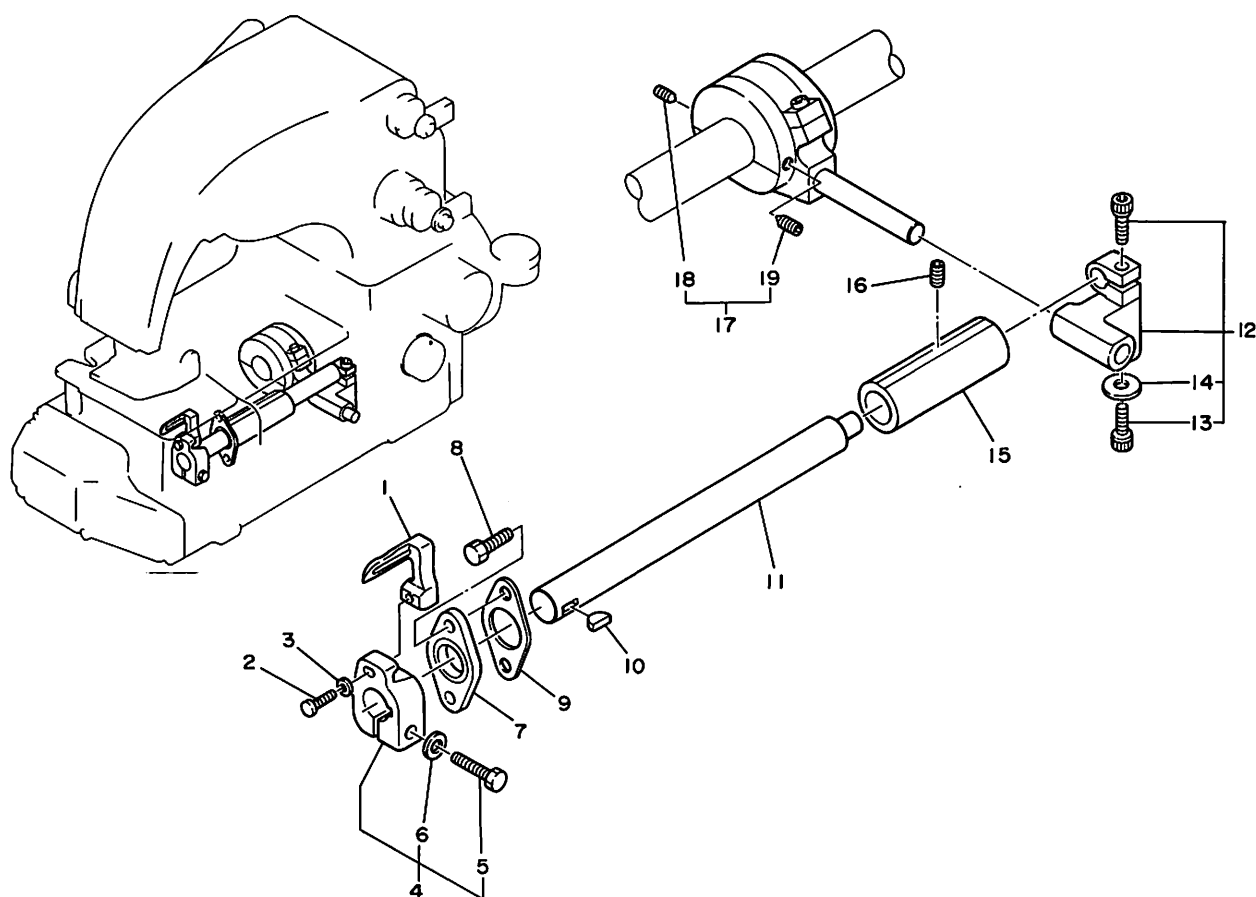
07 MAIN SHAFT & KNIFE ASSEMBLY PARTS

主軸, ナイフ軸組立関係

| 図番 Ref. No. | 部品番号 Part No. | 部品名称 Description | 固数 Q'ty | | 摘要 Remarks | |
|----------------|------------------|--------------------------------|--------------|--------|---------------|---------|
| | | | DS-10A | DS-10B | | |
| 1 | A-10076 | Assembly, seal-knife shaft | ルーバー軸シール組 | 1 | — | |
| 2 | H103212 | Screw, hex HD | 六角ボルト | 2 | — | |
| 3 | A-10058 | Gasket, seal-knife shaft | オイルシート | 1 | — | |
| 4 | C-10045 | Shaft, main | 主軸 | 1 | 1 | |
| 5 | B-1035 | Key | 半月キー | 1 | 1 | |
| 6 | P-10125 | Plug, pipe-main shaft | プラグ(主軸) | 1 | 1 | |
| 7 | A-10044 | Bushing, main shaft-needle end | 下前ブッシュ | 1 | 1 | |
| 8 | SS1032516 | Screw, set | 六角穴付止メネジ | 1 | 1 | |
| 9 | T-3129 | Washer, thrust | スラストベアリングカラー | 2 | 2 | |
| 10 | A-10061 | Eccentric, stroke-feed | エキセンカム | 1 | 1 | (11,12) |
| 11 | SS142038 | Screw, set | 六角穴付止メネジ | 1 | 1 | |
| 12 | SS142038CP | Screw, set | 六角穴付止メネジ | 1 | 1 | |
| 13 | A-10158 | Collar, lock-main shaft | 主軸カラー | 1 | 1 | |
| 14 | SC103258 | Screw, socket HD cap | 六角穴付ボルト | 1 | 1 | |
| 15 | A-10043 | Bushing, main shaft-drive end | 下後ブッシュ | 1 | 1 | |
| 16 | SS1032516 | Screw, set | 六角穴付止メネジ | 1 | 1 | |
| 17 | A-10094 | Gasket, main shaft seal | オイルシート | 1 | 1 | |
| 18 | A-10035 | Assembly, seal-main shaft | 主軸シール組 | 1 | 1 | |
| 19 | H103212 | Screw, hex HD | 六角ボルト | 4 | 4 | |
| 20 | A-10038 | Hub, pulley | プーリーハブ | 1 | 1 | (21) |
| 21 | SS142038 | Screw, set | 六角穴付止メネジ | 2 | 2 | |
| 22 | A-10199 | Pulley, adjustable | プーリー組 | 1 | 1 | (23) |
| 23 | SS142038 | Screw, set | 六角穴付止メネジ | 2 | 2 | |
| 24 | F103258 | Screw, flat HD | 六角ボルト | 3 | 3 | |
| 25 | A-10080 | Assembly, connecting rod-knife | ボールジョイント | 1 | — | |
| 26 | H103212 | Screw, hex HD | 六角ボルト | 1 | — | |
| 27 | H103258 | Screw, hex HD | 六角ボルト | 1 | — | |
| 28 | A-10082 | Crank, bell-knife | ベルクランク(ナイフ) | 1 | — | (29) |
| 29 | SS540316 | Screw, set | 六角穴付止メネジ | 1 | — | |
| 30 | P-10084 | Ring, "O" | "O"リング | 1 | 1 | |
| 31 | A-10083 | Shaft, bell crank-knife | ベルクランクピン | 1 | — | |
| 32 | A-10085 | Bracket, pivot-knife | ブラケット | 1 | 1 | |
| 33 | H103212 | Screw, hex HD | 六角ボルト | 4 | 4 | |
| 34 | A-10087 | Screw, pivot-knife | 軸ネジ | 1 | — | |
| 35 | D-120 | Washer, lock | 平座金 | 1 | — | |
| 36 | A-10086 | Link, knife | リンク | 1 | — | |
| 37 | A-10056 | Bushing, shaft-knife | ルーバー軸ブッシュ | 1 | — | |
| 38 | SS1032516 | Screw, set | 六角穴付止メネジ | 1 | — | |
| 39 | A-10088 | Shaft, knife | ナイフ軸 | 1 | — | |
| 40 | A-10089 | Spring, knife | 板バネ | 2 | — | |
| 41 | A-10090 | Knife, moving | ナイフA | 1 | — | |
| 42 | A-10442 | Plug | 柱 | — | 1 | |
| 43 | P-10441 | Ring, "O" | "O"リング | — | 1 | |

08 LOOPER ASSEMBLY PARTS

ルーパー組立関係



| 図番 Ref. No. | 部品番号 Part No. | 部品名称 Description | 固数 Q'ty | | 摘要 Remarks |
|----------------|------------------|---------------------------|---------|--------|---------------|
| | | | DS-10A | DS-10C | |
| 1 | C-10060 | Looper (two thread) | 1 | 1 | |
| 2 | P540916 | Screw, pan HD | 1 | 1 | |
| 3 | WF5 | Washer | 1 | 1 | |
| 4 | A-10059 | Holder, looper | 1 | 1 | (5, 6) |
| 5 | H103234 | Screw, hex HD | 1 | 1 | |
| 6 | D208 | Washer | 1 | 1 | |
| 7 | A-10076 | Ass'y, seal-looper shaft | 1 | 1 | |
| 8 | H103212 | Screw, hex HD | 2 | 2 | |
| 9 | A-10058 | Gasket, seal-looper shaft | 1 | 1 | |
| 10 | B1035 | Key | 1 | 1 | |
| 11 | A-10055 | Shaft, looper | 1 | 1 | |
| 12 | A-10173 | Ass'y, pivot-looper | 1 | 1 | (13, 14) |
| 13 | SC103212 | Screw, socket HD cap | 2 | 2 | |
| 14 | WF10S | Washer | 1 | 1 | |
| 15 | A-10056 | Bushing, shaft-looper | 1 | 1 | |
| 16 | SS1032516 | Screw, set | 1 | 1 | |
| 17 | A-10150 | Ass'y, cam-looper | 1 | 1 | (18, 19) |
| 18 | SS103258CPL | Screw, set-cone point | 1 | 1 | |
| 19 | SS103212L | Screw, set | 1 | 1 | |

NUMERICAL INDEX OF PARTS (パーツ索引)

| PART NO. | PAGE | PART NO. | PAGE | PART NO. | PAGE | PART NO. | PAGE |
|----------------|--------------|----------------|-----------|----------------|-----------|----------------|-----------|
| A-10005 | 15 | A-10083 | 27 | A-10163 | 21 | A-10426 | 9 |
| A-10007 | 19 | A-10085 | 27 | A-10164 | 15,19 | A-10427 | 11 |
| A-10008 | 19 | A-10086 | 27 | A-10165 | 19 | A-10429 | 9 |
| A-10009 | 21 | A-10087 | 27 | A-10166 | 21 | A-10430 | 9 |
| A-10014 | 17 | A-10088 | 27 | A-10168 | 13 | A-10434 | 17 |
| A-10015 | 15 | A-10089 | 27 | A-10169 | 13 | A-10437 | 9 |
| A-10016 | 15 | A-10090 | 27 | A-10170 | 15 | A-10440 | 9 |
| A-10019 | 15 | A-10091 | 15 | A-10171 | 19 | A-10442 | 27 |
| A-10020 | 15 | A-10092 | 9,17 | A-10172 | 19 | A-10443 | 9 |
| A-10021 | 15 | A-10093 | 15 | A-10173 | 28 | A-10446 | 17 |
| A-10023 | 9,21 | A-10094 | 15,27 | A-10174 | 25 | A-10449 | 17 |
| A-10025 | 21 | A-10095 | 17 | A-10177 | 25 | A-10484 | 23 |
| A-10026 | 21 | A-10097 | 15 | A-10178 | 13 | A-10486 | 25 |
| A-10028 | 21 | A-10098 | 15 | A-10179 | 15 | B-10022 | 15 |
| A-10031 | 21 | A-10100 | 17 | A-10181 | 21 | B-10047 | 21 |
| A-10035 | 27 | A-10101 | 13 | A-10182 | 23 | B-10050 | 13 |
| A-10038 | 27 | A-10102 | 13 | A-10185 | 23 | B-10077 | 25 |
| A-10043 | 27 | A-10103 | 13 | A-10186 | 19 | B-10123 | 19 |
| A-10044 | 27 | A-10105 | 13 | A-10187 | 19 | B-10137 | 21 |
| A-10048 | 21 | A-10106 | 13 | A-10188 | 19 | B-10141 | 19 |
| A-10049 | 13 | A-10109 | 25 | A-10189 | 21 | B-10145 | 19 |
| A-10052 | 13 | A-10113 | 21 | A-10190 | 21 | B-10167 | 13 |
| A-10053 | 13 | A-10114 | 19 | A-10191 | 13 | B-10432 | 9 |
| A-10055 | 28 | A-10115 | 19 | A-10199 | 27 | B-10485 | 17 |
| A-10056 | 27,28 | A-10116 | 15 | A-10204 | 13 | B1035 | 25,27,28 |
| A-10058 | 27,28 | A-10119 | 21 | A-10211 | 21 | C-100-S | 21 |
| A-10059 | 28 | A-10120 | 19 | A-10212 | 21 | C-10003 | 21 |
| A-10061 | 13,27 | A-10121 | 15 | A-10213 | 23 | C-10004 | 21 |
| A-10062 | 25 | A-10124 | 25 | A-10214 | 23 | C-10017 | 15 |
| A-10063 | 25 | A-10127 | 13 | A-10231 | 21 | C-10018 | 15 |
| A-10064 | 25 | A-10128 | 21 | A-10232 | 21 | C-10045 | 27 |
| A-10066 | 25 | A-10130 | 13 | A-10403 | 9 | C-10060 | 28 |
| A-10067 | 25 | A-10134 | 15 | A-10404 | 9 | D10001 | 17 |
| A-10068 | 25 | A-10139 | 19 | A-10405 | 9 | D10002 | 19 |
| A-10069 | 25 | A-10142 | 19 | A-10406 | 9 | P-10226 | 15 |
| A-10070 | 25 | A-10143 | 19 | A-10407 | 9 | P-10227 | 15 |
| A-10071 | 25 | A-10144 | 19 | A-10410 | 9 | P-10413 | 9 |
| A-10072 | 25 | A-10146 | 19 | A-10412 | 9 | P-10428 | 11 |
| A-10073 | 25 | A-10150 | 28 | A-10414 | 9 | 705021 | 9 |
| A-10074 | 25 | A-10155 | 23 | A-10415 | 9 | 705031 | 9 |
| A-10076 | 27,28 | A-10156 | 23 | A-10419 | 9 | | |
| A-10078 | 25 | A-10158 | 27 | A-10421 | 9 | | |
| A-10079 | 25 | A-10159 | 21 | A-10422 | 9 | | |
| A-10080 | 27 | A-10161 | 19 | A-10424 | 9 | | |
| A-10082 | 27 | A-10162 | 23 | A-10425 | 9 | | |

NUMERICAL INDEX OF PARTS (パーツ索引)

| PART NO. | PAGE | PART NO. | PAGE | PART NO. | PAGE | PART NO. | PAGE |
|--------------------|-------------------------|------------------------|----------|--------------------------|---------|----------|------|
| SCREW (ネジ類) | | SS103258CPL | 28 | OTHER PARTS (其の他) | | | |
| A-10011 | 21 | SS142014 | 19,21 | D05003 | 15 | | |
| B103212 | 13 | SS142038 | 13,19,27 | D07025 | 9 | | |
| B103214 | 11,15,17 | SS142038CP | 13,21,27 | D07026 | 9 | | |
| B103238 | 19 | SS540316 | 27 | P-10010 | 19 | | |
| B632316 | 15,21 | | | P-10013 | 19 | | |
| F1032114 | 15 | | | P-10051 | 13 | | |
| F103212 | 9 | | | P-10075 | 25 | | |
| F103238 | 15,17,21,25 | | | P-10084 | 13,27 | | |
| F103258 | 15,23,27 | NUT (ナット類) | | P-10104 | 13 | | |
| F54038 | 21 | NH832 | 17 | P-10107 | 13 | | |
| F63212 | 21 | NH1420 | 13,15 | P-10111 | 15 | | |
| F63234 | 15 | NH1428 | 9 | P-10125 | 9,27 | | |
| F83212 | 17 | NH1428L | 19 | P-10192 | 13 | | |
| F83214 | 15 | NJ10 | 13,21,23 | P-10193 | 21 | | |
| H10321 | 13,15 | 1-178 | 19 | P-10408 | 9 | | |
| H1032114 | 13 | | | P-10409 | 9 | | |
| H103212 | 9,13,15,17, 21,27,28 | WASHER (ワッシャー類) | | P-10411 | 9 | | |
| H103234 | 15,19,21,23, 28 | A-10215 | 25 | P-10420 | 9 | | |
| H103238 | 21 | D-120 | 19,27 | P-10423 | 9 | | |
| H103238R | 23 | D-208 | 15,25,28 | P-10441 | 27 | | |
| H103258 | 9,25,27 | P-10438 | 9 | T3129 | 9,21,27 | | |
| H103278 | 19 | WF5 | 28 | | | | |
| H3824134 | 19 | WF10 | 19 | | | | |
| P540916 | 25,28 | WF10S | 28 | | | | |
| SC103212 | 28 | WF14 | 15 | | | | |
| SC103258 | 27 | WF38 | 19 | | | | |
| SC14201-L | 9 | WN8 | 11,13,15 | | | | |
| SC1420114 | 9,21 | WN14 | 9,15 | | | | |
| SC142034 | 19 | WS10 | 21 | | | | |
| SC142078 | 25 | WS516 | 19 | | | | |
| SC142878 | 25 | | | | | | |
| SC516181 | 19 | | | | | | |
| SC5161858 | 19 | | | | | | |
| SC54012 | 25 | | | | | | |
| SC63234 | 21 | | | | | | |
| SC63278 | 13 | | | | | | |
| SS103212L | 28 | | | | | | |
| SS1032316 | 9,11,13,21 | | | | | | |
| SS103238 | 21 | | | | | | |
| SS1032516 | 19,25,27,28 | | | | | | |

NEWLONG MACHINE WORKS, LTD.

- Head Office** : 4-14, Higashi Ueno 6-chome, Taito-ku, Tokyo 110, Japan
Cable Address : NEWLONG TOKYO, Tel : 03-843-0269, 7311
Telex : 265-5306 NL TOK J, FAX : 03-843-0260, 9998
- Osaka Branch** : 1-8, Obiraki 2-chome, Fukushima-ku, Osaka 553, Japan
Cable Address : NEWLONG OSAKA, Tel : 06-466-3530, 3531
Telex : 524-5680 NLOSA J, FAX : 06-465-5926
- Newlong Taiwan Machine Co., Ltd.** : 3rd Fl., 29, Lane 100, Song Chiang Road, Taipei, Taiwan, R. O. China
Cable Address : NEWLONG TAIPEI, Tel : 02-5716524, 5642692
FAX : 886-2-5221420
- Newlong Machine Philippines, Inc.** : 3590 Davila Street, Pasong Tamo, Makati, Metro Manila, Philippines
Cable Address : NEWLONG MANILA, Tel : 8160207, 882474, 891137
- Newlong Singapore Pte. Ltd.** : No. 68, Kian Teck Road, Jurong Town, Singapore 2262
Cable Address : NLMACHINE SINGAPORE, Tel : 2650901, 2612126, 2643942
Telex : RS23649 A/B:NLSIN, FAX : 001-65-2651994
- Newlong Do Brasil Maquinas Industriais Ltda.** : Rua. Francisco Tapajós, 409/415, Jardim da Saúde, Sao Paulo, Brasil
Cable Address : NEWLONG SAOPAULO, Tel : 276-9744
Telex : 1121566 NEWL BR
- American-Newlong, Inc.** : 5310 South Harding Street, Indianapolis, Indiana 46217
Tel : 317-787-9421
Telex : TWX 810-341-3313 AMLONG IND. FAX : 317-786-5225
- Newlong Holland B.V.** : C/O World Trade Center Amsterdam Tower B, 9th Floor Strawinskylaan 929
1077 XX Amsterdam, Holland
Tel : 020-575-3121
Telex : 18896 NLN NL FAX : 020-627-255 C/O WORLD TRADE CENTER
- Newlong Malaysia SDN BHD** : 77 Jalan SS20/11, Damansara Kim, 47400 Petaling Jaya, Selangor, Malaysia
Tel : 7188323, 7188401
Telex : 37868 NLMAS MA
- Newlong Thailand Ltd.** : 25/1 Soi-16, Sukhumvit Road, Bangkok, Thailand.
Tel : 258-1834
Telex : 21137 NLTHAI TH

編輯・検査 (T, Y, A)

From the library of: Diamond Needle Corp



4-14 HIGASHI-UENO 6-CHOME, TAITO-KU TOKYO, JAPAN TEL: (843) 0269

No.1

IE 3010A 85-12-500 ©
PRINTED IN JAPAN