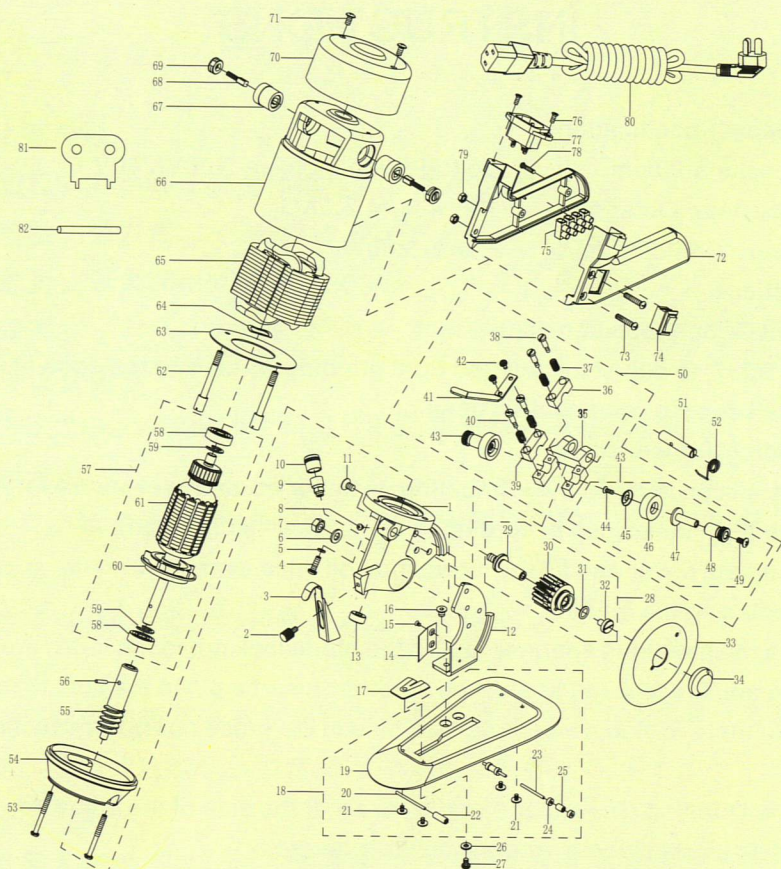


90C Three Dimensional Assembly Picture



序号 Ref.no.	零件编号及名称 Part.no & Description
1	C10机头Gear Housing
2	B104护刀架螺钉Screw
3	B103防护架Safe Guard
4	C52 M4X14十字螺丝Standard Screw
5	W46 φ 4弹性垫圈Elastic Washer
6	B17 φ 6平垫圈Washer
7	B16 M6X5.2螺母帽Nut Cap
8	C174砂轮架轴螺丝Screw
9	B10油杯Oil Cup
10	B9油杯盖Cap For Oil Cup
11	E115 M5X8十字沉头螺钉Standard Screw
12	C114机头导向架Standard
13	B102铜套Copper Collar
14	C116分布片Guide Plate
15	B26 M2.5X3十字沉头螺钉Standard Screw
16	B118 M5X6.3内六角沉头螺钉Standard Screw
17	B220下刀架Lower Blade Plate
18	B289底盘组件Base Plate Assembly
19	B119底盘Base Plate
20	B123前滚子轴Roller Shaft(Front)
21	B125 M3X5带法兰十字沉头螺丝Standard Screw
22	B124底盘前滚子Front Roller
23	B128底盘后滚子轴Roller Shaft(Rear)
24	B129后滚子Roller
25	B130隔套Spacer
26	B221垫圈Washer
27	B222 M4螺钉Screw
28	C176蜗轮成套Worm Wheel Assembly

序号 Ref.no.	零件编号及名称 Part.no & Description
29	C109蜗轮轴Worm Wheel Shaft
30	C110蜗轮Worm Wheel
31	B74紫铜垫圈Brass Washer
32	B20蜗轮架轴螺丝Worm Wheel Shaft Screw
33	A88刀片Blade
34	B22刀片帽Blade Nut
35	B23砂轮架Grinder Wheel Holder
36	B24砂轮架上块(右)Right Plate
37	B241弹簧Spring
38	B242螺丝(右)Screw
39	B239砂轮架上块(左)Left Plate
40	B243螺丝(右)Screw
41	B244砂轮手柄Grinder Arm
42	W19砂轮手柄螺丝Screw
43	B192砂轮组件成套Grinder Assembly
44	A7 M3X8十字沉头螺钉Standard Screw
45	A8鱼眼垫圈Fish Eye Washer
46	A9砂轮Grinder Wheel
47	B236砂轮内轴Grinder Wheel Shaft(Inner)
48	B237砂轮外轴Grinder Wheel Shaft(Outer)
49	G42 M4X8十字沉头螺丝Standard Screw
50	B287砂轮成套Grinder Assembly
51	A74砂轮架轴Grinder Wheel Holder Shaft
52	A73砂轮架扭簧Spring
53	C148 M4X32十一字半圆头螺丝Standard Screw
54	C146电机盖Motor Cover
55	C151蜗杆Drive Gear
56	C152 φ 2.5X14开口销Roll Pin

序号 Ref.no.	零件编号及名称 Part.no & Description
57	C180转子成套Rotor Assembly
58	A25 608轴承Bearing
59	C179 φ 8E形轴用挡圈Shaft Ring
60	C155风叶Fan
61	C156转子Rotor
62	C149定子螺丝Stator Screw
63	C150空气导向圈Air Guide
64	A23 φ 22X0.3波形垫圈Wave Washer
65	C157定子Stator
66	C158电机外壳Motor Cover
67	B182碳刷Carbon Brush Socket
68	C161碳刷Carbon Brush
69	C160碳刷盖Cap For Carbon Brush
70	C159拉风盖Vent Cover
71	G42 M4X8十字沉头螺丝Standard Screw
72	C163手柄Handle
73	B165 M4X20十一字半圆头螺丝Standard Screw
74	B164开关Switch
75	B163接线柱Terminal
76	A7 M3X8十字沉头螺丝Standard Screw
77	C168电源线插座Socket
78	B161 M3X16十字盘头自攻螺丝Standard Screw
79	G24 M4X3.2螺母Nut
80	C170电源线Cord With Plug
81	B70扳手Spanner
82	C172刀片锁紧销Pin