

MODEL E HANDLE & ELECTRIC DRIVE

ILLUSTRATED PARTS BREAKDOWN

ORDER BY NUMBER

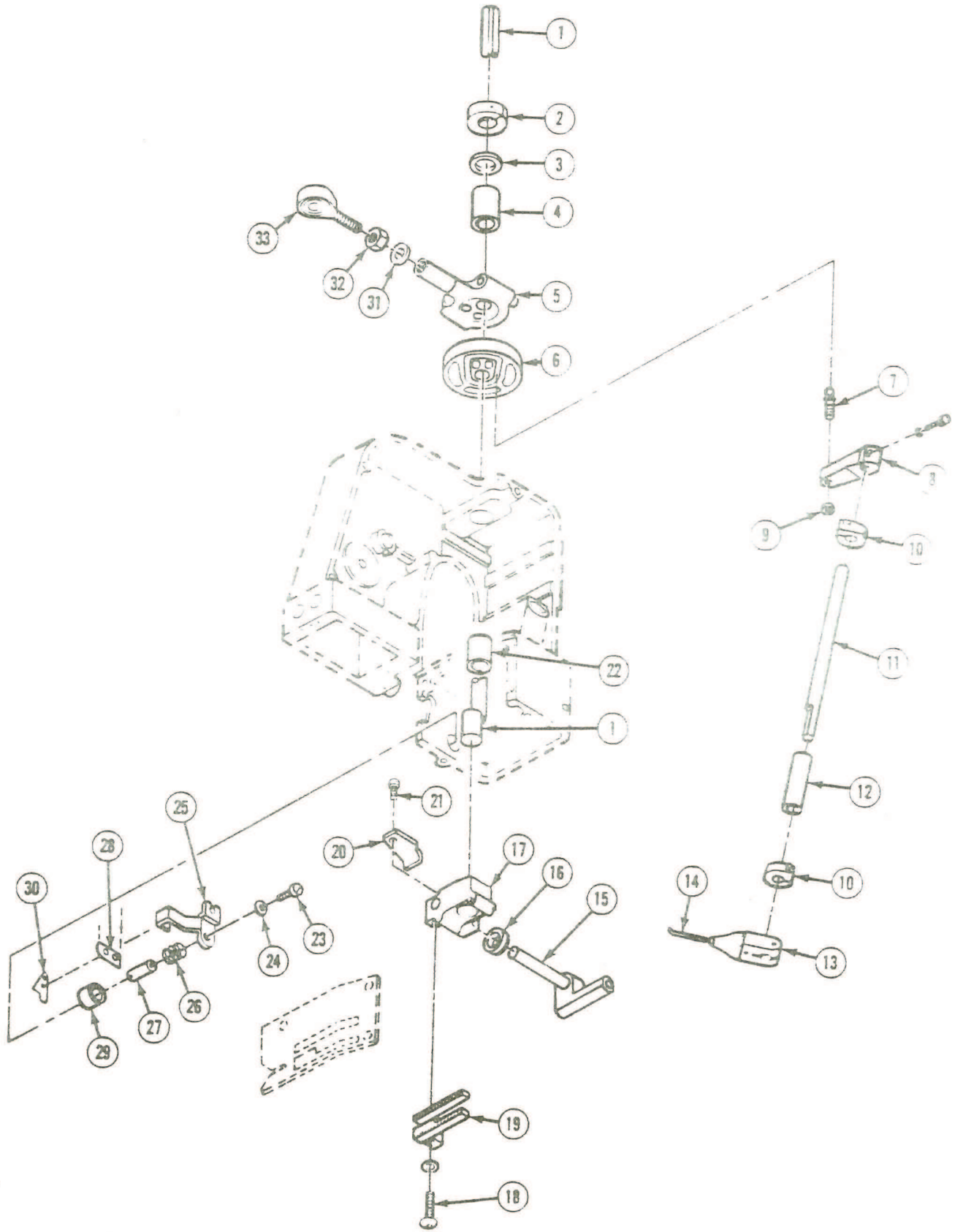
ITEM	QUAN.	PART NO.	DESCRIPTION
1	1	11004	ASS., BELT GUARD & HANDLE
2	1	11900	BELT
3	1	11905	ASSY., PULLEY
4	1	11012	HANGER, (MOD. E)
5	1	11006	SWITCH
6	1	11009	RESERVOIR, OIL- (MOD. E)
7	1	11070	ASSY., OIL TUBE- (MOD. E)
8	1	11071	CLAMP, OIL RESERVOIR (MOD. E)
9	1	11017	CLIP, HANGER- (MOD. E)
10	1	11000	CORD, SET
	1	75245	SCREW, SOC. SET - # 8-32 N.C. X 3/16
11	1	11900	MOTOR LEAD- 3 WIRE SJO
12	1	11073	STRAIN RELIEF
13	1	11015	THREAD STAND
	2	75221	SCREW, SOC. FLAT - # 10-32 N.F. X 3/8
14	1	75350	NUT, WING
15	1	11004	BOLT, THREAD CLAMPING
16	1	P3401	GRIP, CORD
17	1	11950	MOTOR, 115 V
18	1	11902	PULLEY, MOTOR-TIMING
19	1	11900	ASSY., HINGE-MOTOR MOUNT
	2	75357	SCREW, SEMS-PANHEAD - # 8-32 N.C. X 7/16
	4	75223	SCREW SOC. FLAT - # 10-32 N.F. X 5/8
20	1	11927	PLATE, BALL BEARING (CLOSED)
	4	11918	SCREW, END PLATE
21	1	11953	WASHER, FELT-RETAINING (CLOSED END)
22	AS REQ.	11954	WASHER, SPACING
23	2	11955	BEARING, BALL
24	1	11977	PLUG, INSPECTION HOLE
25	2	11917	SCREW, CAP-BRUSH HOLDER
26	2	11903	HOLDER, BRUSH - 1/2
	2	11930	SCREW, SET-BRUSH HOLDER
27	1	11957	END BELL, BRUSH END
	4	11919	SCREW, ATTACHING END BELL
28	2	11910	SPRING, BRUSH
29	2	11915	BRUSH
30	1	11959	ARMATURE, COMPLETE- 115 V
31	1	11925	ASSY., RING & FIELD- 115 V
32	2	11922	FIELD, 115 V
33	1	11902	WASHER, BALL BEARING SPRING
34	1	11903	END BELL-SHAFT END
	4	11919	SCREW, ATTACHING - END BELL
35	1	11904	WASHER, FELT-RETAINING (OPEN END)
36	1	11905	WASHER, FELT
37	1	11900	PLATE, BALL BEARING (OPEN END)
	4	11918	SCREW, END PLATE

MOTOR INSTRUCTIONS

This motor is intermittent duty, which means that it should not run for long periods of time continuously. It is made for start and stop operations only, such as required by bag closing.

Brushes should be inspected at regular intervals so that wear can be detected, and replaced before they are about 1/8" in length. To remove brushes, take out two screws from each side of motor; when replacing brush, be sure it is replaced at the same axial position as removed. If it isn't, excessive sparking and loss of power will result. New brushes are furnished with machine and can be purchased from us at any time.

No motor will operate properly unless the bearings are kept well lubricated. Ball bearings are packed with grease sufficient for a period of from one to two years, depending on the service given the motor and temperature of the room in which it operates. To refill, remove the end caps covering the bearings and clean out the old grease before putting in the new. If the ball bearings are removed for washing in gasoline, the built-in grease seal should be facing toward the motor interior when replaced. Use only well known make of SODIUM BASE BALL BEARING GREASE.

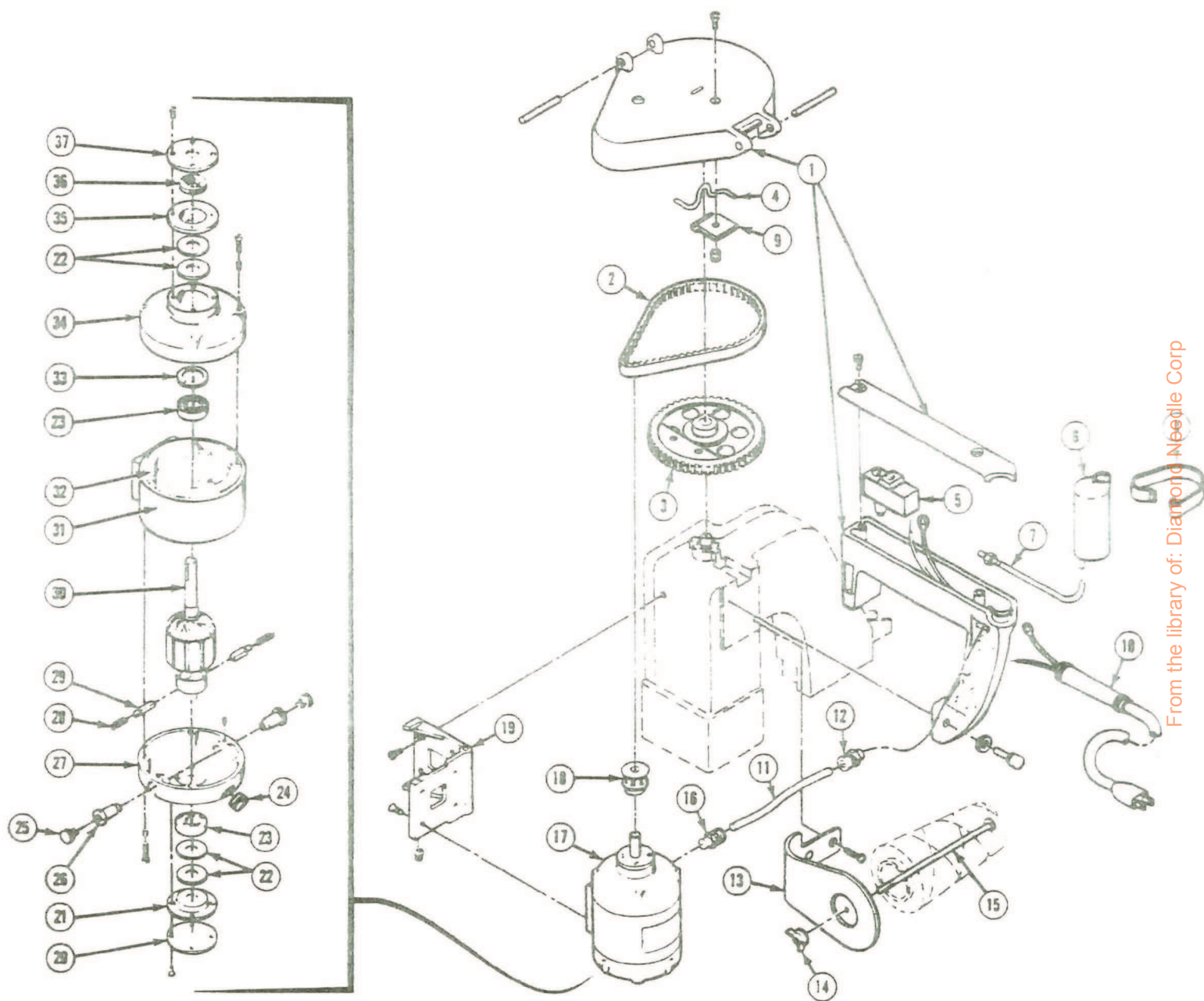


MODEL E MAIN SHAFT, LOOPER ASSY.

ILLUSTRATED PARTS BREAKDOWN

ORDER BY NUMBER

ITEM	QUAN.	PART NO.	DESCRIPTION
1	1	11600	MAIN SHAFT
2	1	11603	COLLAR, MAIN SHAFT
	1	75185	SCREW, SOC. CAP # 5-40 N.C. X 3/8
3	1	11006	WASHER, THRUST
4	1	11832	BUSHING, MAIN SHAFT-REAR (MOD. E)
5	1	11879	ASSY., CON ROD (MOD. E)
6	1	11310	ASSY., CAM-LOOPER
	1	75262	SCREW, SOC. SET- # 10-32 N.F. X 5/8- CONE PT
	1	75259	SCREW, SOC. SET- # 10-32 N.F. X 1/2
7	1	11300	STUD, CAM FOLLOWER
8	1	11307	ARM, FOLLOWER- CAM
	1	75187	SCREW, SOC. CAP- # 5-40 N.C. X 5/8
	1	75277	WASHER, FLAT- # 5
9	1	75333	NUT, LOCK- # 10-32 N.F.
10	2	11304	COLLAR, LOOPER SHAFT
	2	75166	SCREW, SOC. CAP- # 5-40 N.C. X 1/2
11	1	11303	SHAFT, LOOPER
12	1	11819	BUSHING, LOOPER SHAFT (MOD. E)
13	1	11301	HOLDER, LOOPER
	1	75246	SCREW, SOC. SET- # 8-32 N.C. X 3/16 FLAT POINT
	1	75164	SCREW, SOC. CAP- # 5-40 N.C. X 1/4
14	1	11308	LOOPER
15	1	11002	SLIDE (MOD. E)
16	1	11410	WASHER, FELT
17	1	11815	CARRIER BLOCK, FEED DOG (MOD. E) 4 - #75358 SOC. SCREW
18	1	75172	SCREW, SOC. CAP- # 8-32 N.C. X 1
	1	75278	WASHER, FLAT - # 8
19	1	11203	FEED DOG
20	1	11803	CLIP ANGLE (MOD. E)
21	1	75170	SCREW, SOC. CAP- # 8-32 N.C. X 5/16
22	1	11831	BUSHING, MAIN SHAFT-FRONT (MOD. E)
23	1	75023	SCREW HEX- # 10-32 N.F. X 5/16
24	1	75296	WASHER, LOCK- # 10
25	1	11807	BRACKET, KNIFE (MOD. E)
26	1	11704	SPRING, KNIFE-TENSION
27	1	11707	SHAFT, KNIFE
28	1	11703	KNIFE, STATIONARY
	2	75039	SCREW, FLAT HD.- # 3-48 N.C. X 5/16
29	1	11816	BUSHING, KNIFE SHAFT
30	1	11702	KNIFE, MOVING
	2	75837	SCREW, FLAT HD.- # 3-48 N.C. X 3/16
31	1	75292	WASHER, LOCK- 5/16 (INTERNAL TOOTH)
32	1	75338	NUT, HEX- 5/16- 24 N.F.
33	1	11807	BEARING, ROD END



MODEL E HOUSING, NEEDLE LEVER, PRESSER FOOT

ILLUSTRATED PARTS BREAKDOWN

ORDER BY NUMBER

ITEM	QUAN.	PART NO.	DESCRIPTION
1	1	11023	HOUSING (MOD. E)
2	1	11024	COVER, HOUSING (MOD. E)
3	8	75144	SCREW, RD. HD.— # 8-32 N.C. X 5/8 (FOR 11024)
4	1	11004	NAMEPLATE (MOD. E)
5	1	11010	STUD, FEED DOG—CARRIER SLIDE (MOD. E)
	2	75158	SCREW, SOC. BTN HD.— # 10-32 N.F. 3/8 X 1/2
6	1	11102	COVER, LOOPER
	1	11100	STUD, LOOPER COVER
7	1	11210	THROAT PLATE
	3	75354	SCREW, FLAT HD.— # 8-40 N.F. X 3/8
8	1	11110	TUBE, THREAD GUIDE—REAR
9	2	75010	SCREW, BNDG. HD.— # 8-32 N.C. X 3/16
10	1	11009	PLATE, COVER (MOD. E)
	1	75355	SCREW, BNDG. HD.— # 8-32 N.C. X 1/8
11	1	11101	GUARD, NEEDLE BAR
	3	75014	SCREW, BNDG. HD.— # 8-32 N.C. X 3/16
12	1	11400	ASSY., PRESSER FOOT
13	1	11413	BUSHING, LOWER
14	1	11414	SPRING, PRESSER BAR
15	1	11405	ASSY., CLAMP—PRESSER BAR
	1	75106	SCREW, SOC. CAP— # 5-40 N.C. X 1/2
16	1	11404	PRESSER BAR
18	1	11407	ASSY., LEVER—LIFTER
19	1	75273	SCREW, TRUSS HD.— # 8-32 N.C. X 1/2
20	1	11410	WASHER, FELT
21	1	11417	LOCKNUT
22	1	D5	NEEDLE
23	1	11501	NUT, NEEDLE BAR
24	1	11504	BUSHING, NEEDLE BAR—LOWER
25	1	11502	ASSY., CLAMP—NEEDLE BAR
26	1	11500	NEEDLE BAR
27	2	11503	BUSHING, NEEDLE BAR, PRESSER BAR—UPPER
28	1	11020	PIVOT, NEEDLE LEVER (MOD. E)
29	1	11000	PIN, NEEDLE LEVER PIVOT (MOD. E)
30	1	11025	LEVER, NEEDLE (MOD. E)
31	1	75356	SCREW, CAP— # 6-32 N.C. X 5/8
32	1	11008	CLAMP, PIVOT—NEEDLE (MOD. E)
33	1	11507	STUD, CONNECTING ROD
34	1	11510	SPRING
35	1	11200	WASHER
36	1	75076	SCREW, HEX HD.— # 10-32 N.F. X 1/2
37	1	75050	SCREW, FLAT H.D.— # 8-40 N.F. X 5/16 (TENSION NOT RETAINING)
38	1	11116	NUT, TENSION—UPPER
39	1	11120	LOCKWASHER
40	1	11117	NUT, TENSION—LOWER
41	1	11115	SPRING, TENSION
42	2	11114	DISC, TENSION
43	1	11113	STUD, TENSION
44	2	11109	EYELET, THREAD PULL OFF
45	1	11118	TUBE, THREAD GUIDE—REAR
	2	75010	SCREW, BNDG. HD.— # 6-32 N.C. X 3/16 (FOR 11118)

