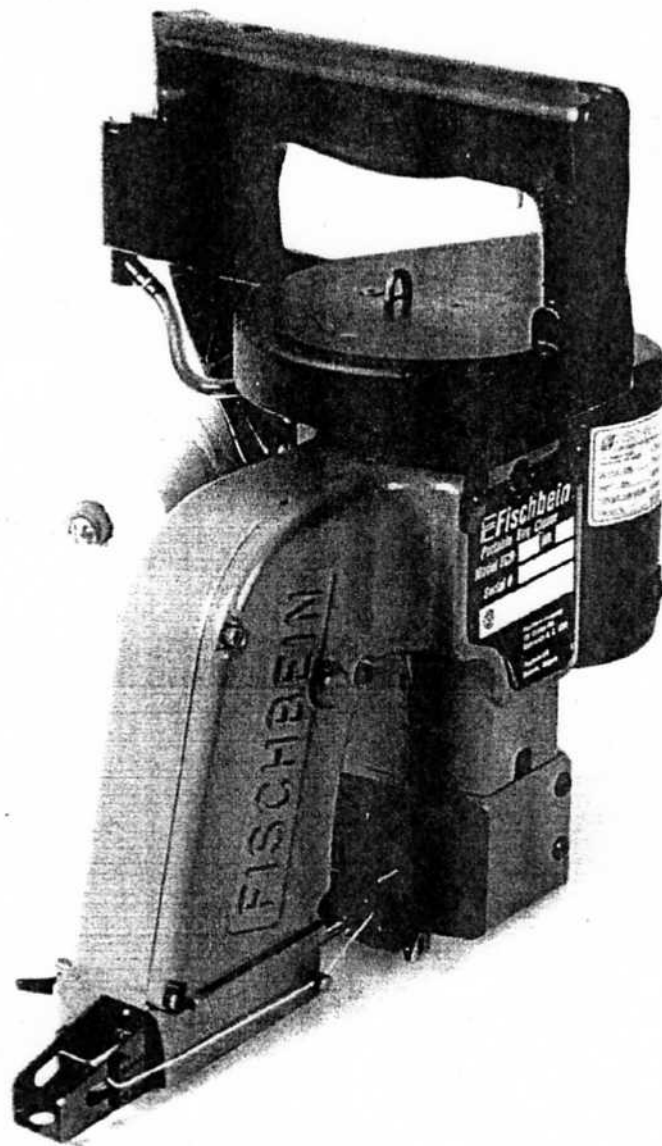


# FISCHBEIN® COMPANY

**MODEL F  
PORTABLE  
SEWING MACHINE**

**MÁQUINAS DE COSER  
PORTATILES MODELO F**



From the library of: Diamond Needle Corp

**8. SPARE PARTS**

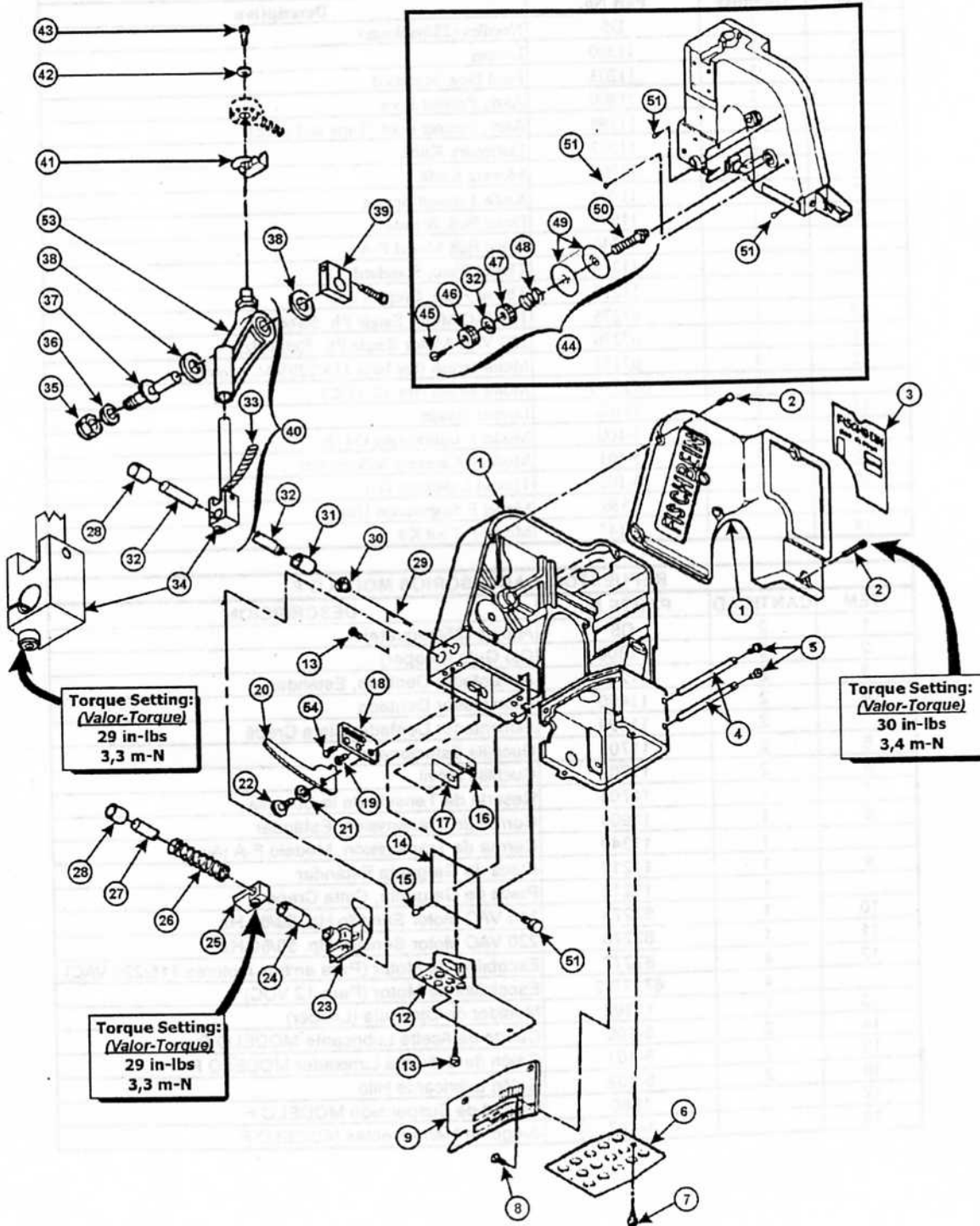
**8. PARTES DE REPUESTO**

MODEL F SPARE PARTS AND ACCESSORIES			
Item	Quantity	Part No.	Description
1	2	D5	Needles (25/package)
2	2	11300	Looper
3	2	11203	Feed Dog, Standard
4	2	11400	Assy, Presser Foot
	2	11399	Assy, Presser Foot (Tape and plstc)
5	2	11703	Stationary Knife
6	2	11702	Moving Knife
7	1	11704	Knife Tension Spring
8	1	11909	Drive Belt, Standard
	1	11340	Drive Belt Model F-A
9	1	11210	Throat Plate, Standard
	1	11212	Throat Plate, Crepe Tape
10	1	67275	115VAC Motor Single Ph. 50/60 Hz.
11	1	67276	220 VAC Motor Single Ph. 50/60 Hz.
12	4	67277	Motor Brush (for both 115/220VAC Motors)
	4	67277-2	Motor Brush (for 12 VDC)
13	1	11302	Looper Gauge
14	2	5-100	Model F Lubricating Oil Qt.
15	2	5-101	Model F Cleaning Solvent Gal.
16	2	5-102	Thread Lubricant Gal.
17		1550	Model F Suspension Unit
18		1-147	Model F Tool Kit

REPUESTOS Y ACCESORIOS MODELO F			
ITEM	CANTIDAD	PARTE No.	DESCRIPCION
1	2	D5	Agujas (25/paquete)
2	2	11300	Ojo Guía (Looper)
3	2	11203	Alimentador Dentado, Estándar
4	2	11400	Alimentador Dentado
	2	11399	Alimentador Dentado, Cinta Crepé
5	2	11703	Cuchilla Estacionaria
6	2	11702	Cuchilla Móvil
7	1	11704	Resorte de Tensión de la Cuchilla
8	1	11909	Correa de Transmisión, Estándar
	1	11340	Correa de Transmisión, Modelo F-A (Aire)
9	1	11210	Placa de Garganta Estándar
	1	11212	Placa de Garganta, Cinta Crepé
10	1	67275	115 VAC Motor Sencillo Hp. 50/60 Hz
11	1	67276	220 VAC Motor Sencillo Hp. 50/60 Hz
12	4	67277	Escobillas de Motor (Para ambos motores 115/220 VAC)
	4	67277-2	Escobillas de Motor (Para 12 VDC)
13	1	11302	Medidor de Ojo Guía (Looper)
14	2	5-100	Cuarto de Aceite Lubricante MODELO F
15	2	5-101	Galón de Solvente Limpiador MODELO F
16	2	5-102	Galón Lubricante Hilo
17		1550	Unidad de Suspensión MODELO F
18		1-147	Juego de Herramientas MODELO F

**9. DRAWINGS AND PARTS LISTS**      **9. ESQUEMA Y LISTA DE PARTES**

**PLATE A**



FISCHBEIN® F SERIES PORTABLE SEWING MACHINES  
OPERATOR'S MANUAL

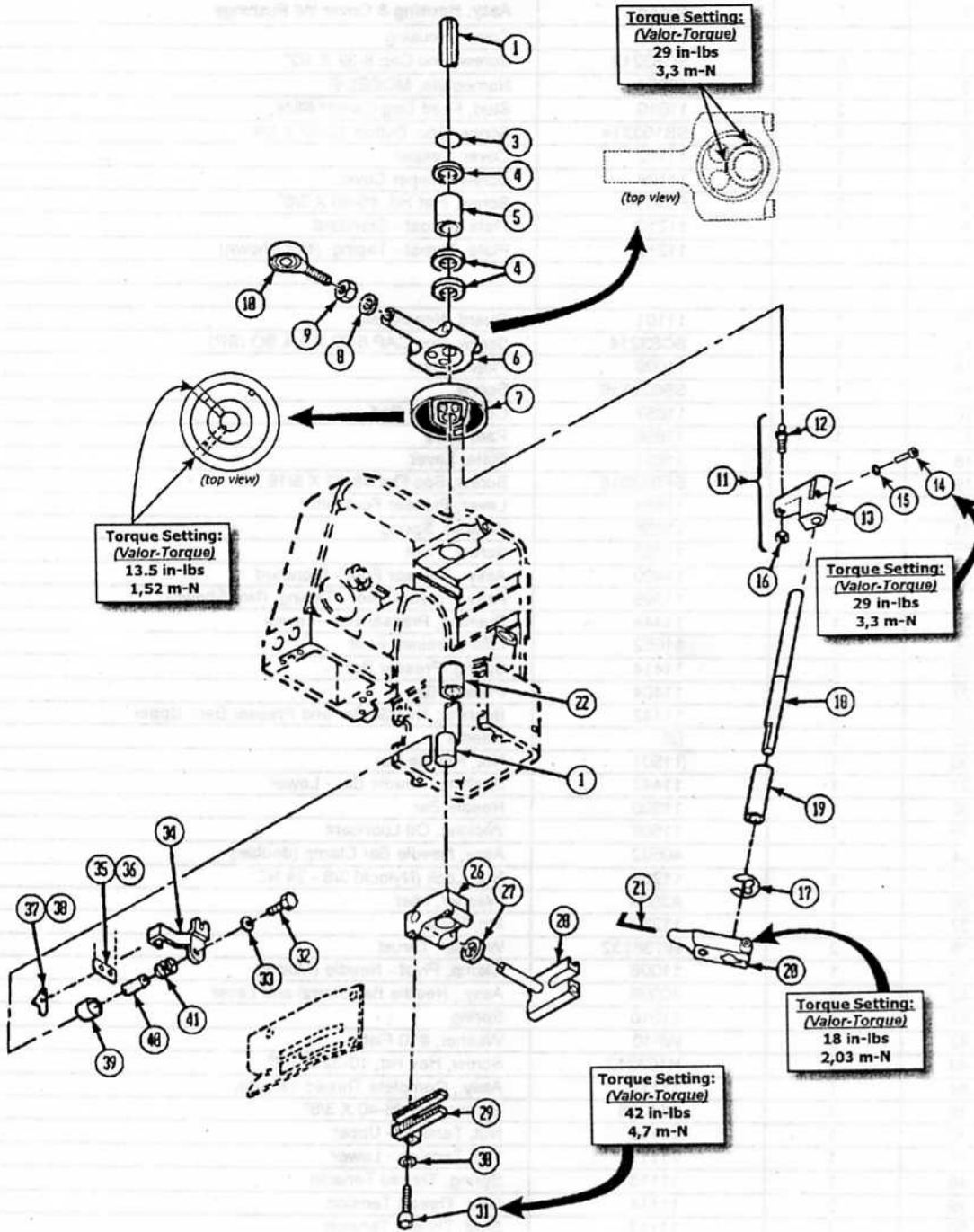
MODEL MODEL F HOUSING, NEEDLE LEVER & PRESSER FOOT

Plate "A"

ITEM	QUAN.	PART NO.	DESCRIPTION
1	1	40448	Assy, Housing & Cover W/ Bushings
		11299	Cover, Housing
◆ 2	6	SC83212	Screw, Soc Cap 8-32 X 1/2"
3	1	40004	Nameplate, MODEL F
4	2	11010	Stud, Feed Dog Carrier Slide
5	4	SB103214	Screw, Soc. Button 10-32 X 1/4"
6	1	11102	Cover, Looper
7	1	11108	Screw, Looper Cover
8	3	F64038	Screw, Flat Hd. #6-40 X 3/8"
9	1	11210	Plate, Throat - Standard
		11212	Plate, Throat - Taping (Not Shown)
12	1	11101	Guard, Needle Bar
13	4	SC83214	Screw, Soc CAP 8-32 X 1/4 BO (SP)
14	1	11009	Plate, Cover
15	1	SB832516	Screw
16	1	11657	Cover, Slide Pad
17	1	11656	Pad, Slide
18	1	11651	Plate, Lever
19	1	SF832516	Screw, Soc Flat #8-32 X 5/16 BO
20	1	11654	Lever, Presser Foot Lifter
21	1	11655	Washer, Spring
22	1	11653	Screw, Pivot
23	1	11400	Assy., Presser Foot - Standard
		11399	Assy, Presser Foot - Taping (Not Shown)
24	1	11444	Bushing, Presser Bar - Lower
◆ 25	1	11652	Lifter, Presser Foot
26	1	11414	Spring, Presser Bar
27	1	11404	Presser Bar
28	2	11442	Bushing, Needle Bar and Presser Bar - Upper
29	1	D5	Needle
30	1	11501	Nut, Needle Bar
31	1	11443	Bushing, Needle Bar - Lower
32	1	11500	Needle Bar
33	1	11508	Wicking, Oil Lubricant
◆ 34	1	40502	Assy, Needle Bar Clamp (double)
35	1	11268	Nut, Lock (Nylock) 3/8 - 24 NC
36	1	A3934	Washer, Idler
37	1	11287	Pin, Pivot
38	2	WT38132	Washer, Thrust
39	1	11008	Clamp, Pivot - Needle (Mod E)
40	1	40099	Assy., Needle Bar Clamp and Lever
41	1	11510	Spring
42	2	WF10	Washer, #10 Flat
43	1	H103212	Screw, Hex Hd. 10-32 X 1/2"
44	1	11112	Assy., Complete Thread Tension
45	1	F64038	Screw, Flat #6-40 X 3/8"
46	1	11116	Nut, Tension - Upper
47	1	11117	Nut, Tension - Lower
48	1	11115	Spring, Thread Tension
49	2	11114	Disc, Thread Tension
50	1	11113	Stud, Thread Tension
51	4	11109	Eyelet, Thread Pulloff Eyelet
52	1	11120	Washer, Split Lock 1/4" LT Tension
53	1	11025	Lever, Needle
54	1	SB832516	Screw, Soc Btn 8-32 X 5/16 BO (SP)

◆ Indicates Item has a specified torque (*indica articulo con lleva torque especificado*)

**PLATE B**



From the library of: Diamond Needle Corp

FISCHBEIN® F SERIES PORTABLE SEWING MACHINES  
OPERATOR'S MANUAL

MODEL MODEL F MAIN SHAFT & LOOPER ASSEMBLY

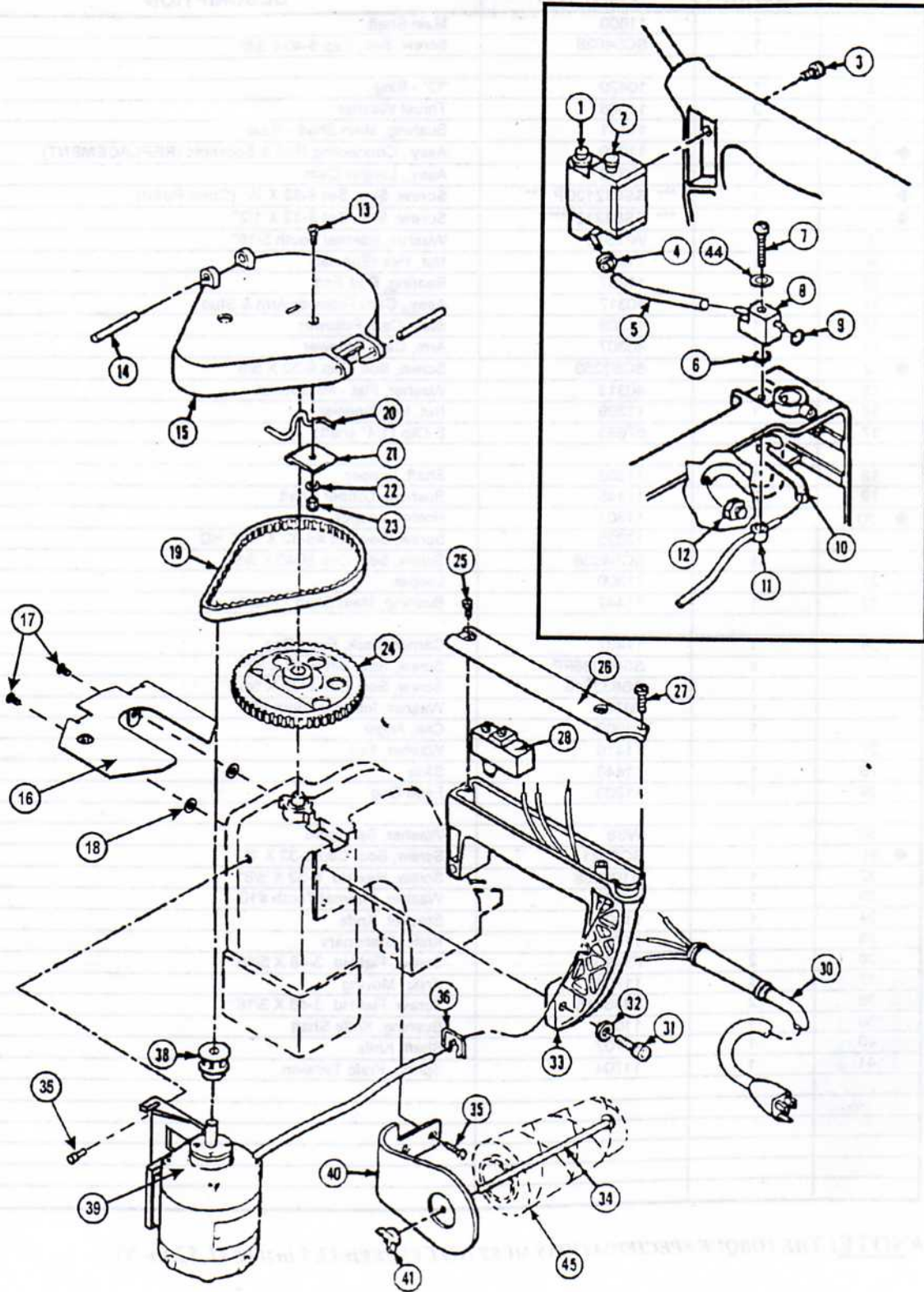
Plate "B"

ITEM	QUAN.	PART NO.	DESCRIPTION
1	1	11600	Main Shaft
	1	SC54038	Screw, Soc. Cap 5-40 x 3/8"
3	1	10420	"O" - Ring
4	3	11006	Thrust Washer
5	1	11441	Bushing, Main Shaft - Rear
◆ 6	1	11079	Assy., Connecting Rod & Eccentric (REPLACEMENT)
7	1	40310	Assy., Looper Cam
◆	1	*** SS83212CP ***	Screw, Soc. Set 8-32 X 1/2" (Cone Point)
◆	1	*** SS83212 ***	Screw, Soc. Set 8-32 X 1/2"
8	1	WIT516	Washer, Internal Tooth 5/16"
9	1	11608	Nut, Hex (Special)
10	1	11607	Bearing, Rod End
11	1	40317	Assy., Cam Follower Arm & Stud
12	1	11308	Stud, Cam Follower
13	1	40307	Arm, Cam Follower
◆ 14	1	SC63258	Screw, Soc. Cap 6-32 X 5/8"
15	1	40313	Washer, Flat - #6 Special
16	1	11309	Nut, Hex-Special
17	1	67693	E-Clip (1/4" shaft)
18	1	11303	Shaft, Looper
19	2	11445	Bushing, Looper Shaft
◆ 20	1	11301	Holder, Looper
	1	12025	Screw, Soc Set #8-32 X 3/16 HD
	1	SC54038	Screw, Soc. Cap 5040 X 3/8"
21	1	11300	Looper
22	1	11447	Bushing, Main Shaft - Front
26	1	11437	Carrier Block, Feed Dog
	4	SS64038FP	Screw, Soc. Set 6-40 X 3/8"
	1	SB832516	Screw, Soc. Btn. 8-32 X 5/16"
	1	WIT8	Washer, Internal Tooth #8
	1	11003	Clip, Angle
27	1	11410	Washer, Felt
28	1	11446	Slide
29	1	11203	Feed Dog
30	1	WS8	Washer, Spring #8
◆ 31	1	SC8321	Screw, Soc. Cap 8-32 X 1"
32	1	H103238	Screw, Hex Hd. 8-32 X 3/8"
33	1	WIT10	Washer, Internal Tooth #10
34	1	11007	Bracket, Knife
35	1	11703	Knife, Stationary
36	2	F348516	Screw, Flat Hd. 3-48 X 5/16"
37	1	11702	Knife, Moving
38	2	F348316	Screw, Flat Hd. 3-48 X 3/16"
39	1	11016	Bushing, Knife Shaft
40	1	11707	Shaft, Knife
41	1	11704	Spring, Knife Tension

\*\*\*NOTE: THE TORQUE SPECIFICATIONS MUST NOT EXCEED 13.5 in-LBS (1,52 m-N).

◆ Indicates Item has a specified torque (*indica artículo con lleva torque especificado*)

PLATE C



MODEL MODEL F HANDLE AND ELECTRIC DRIVE

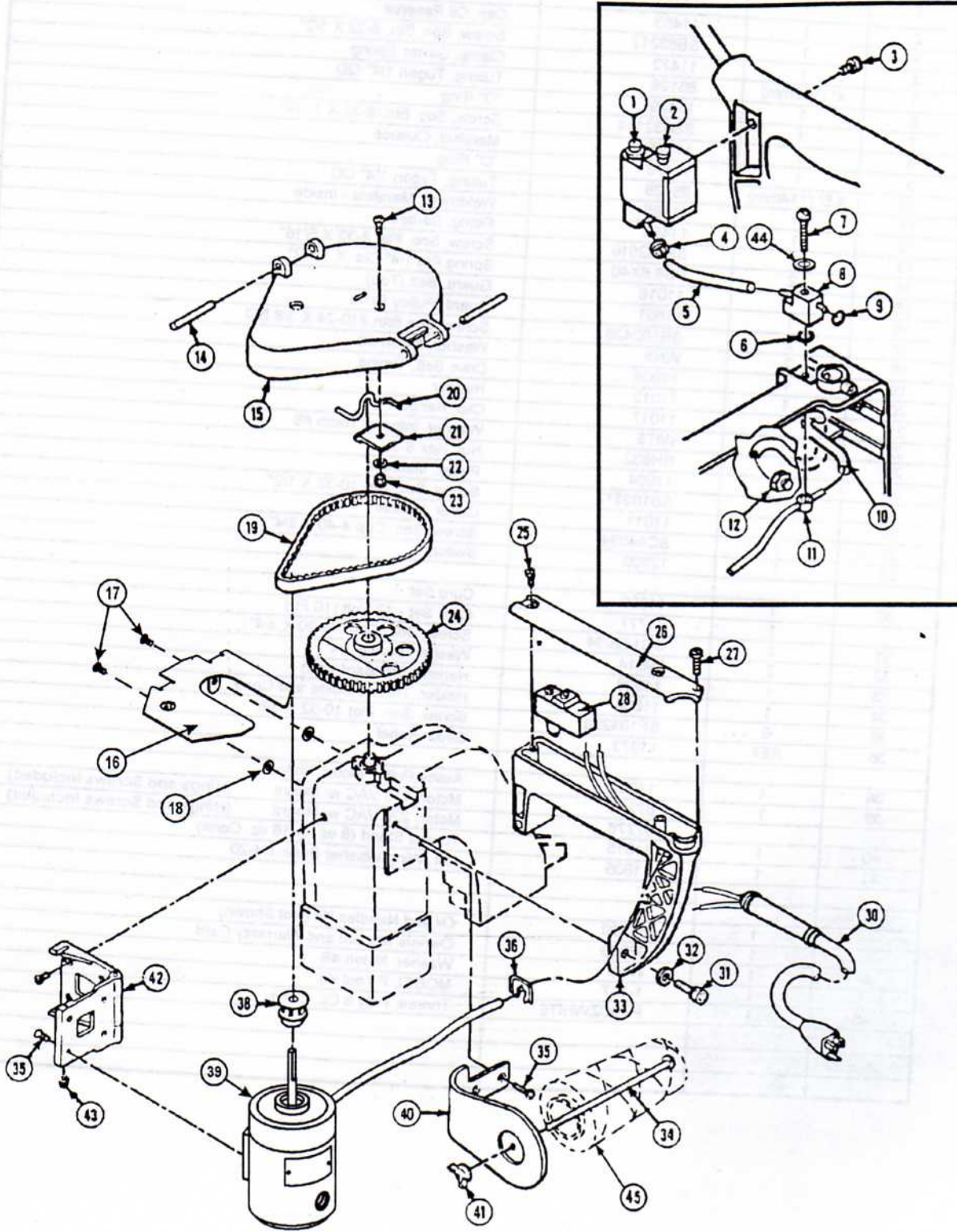
Plate "C"

ITEM	QUAN.	PART NO.	DESCRIPTION
1	1	11450	Assy., Oil Pump
2	1	11453	Cap, Oil Reserve
3	1	SB83212	Screw, Soc. Btn. 8-32 X 1/2"
4	1	11472	Clamp, Garter Spring
5	4" (102mm)	85128	Tubing, Tygon 1/4" OD
6	1	11479	"O" Ring
7	1	SB832114	Screw, Soc. Btn. 8-32 X 1 1/4"
8	1	11475	Manifold, Outside
9	1	11478	"O" Ring
10	4.5" (114mm)	85128	Tubing, Tygon 1/4" OD
11	1	11485	Weldment, Manifold - Inside
12	1	11490	Fitting, Barbed
13	1	SF832516	Screw, Soc. Flat 8-32 X 5/16"
14	2	PS6.6X40	Spring Pin 1/4" Dia. X 1 1/2"
15	1	11018	Guard, Belt (Top)
16	1	11801	Guard, Pulley Drive
17	2	SB102438	Screw, Soc Btn #10-24 X 3/8 BO
18	2	WN8	Washer, Nylon #8
19	1	11909	Drive Belt, Timing
20	1	11012	Hanger
21	1	11017	Clip, Hanger
22	1	WIT8	Washer, Internal Tooth #8
23	1	NH832	Nut, Hex 8-32
24	1	11904	Pulley, Machine
25	2	SB103212	Screw, Soc. Set 10-32 X 1/2"
26	1	11011	Cover, Handle
27	1	SC44034	Screw, Soc. Cap 4-40 X 3/4"
28	1	12500	Switch
30	1	11808	Cord Set
	1	11777	Cord Set - 12 Volt (10 Ft.)
31	2	SC142034	Screw, Soc. Cap 1/4-20 X 3/4"
32	2	WS14	Washer, Spring 1/4"
33	1	11028	Handle (Standard Unit)
34	1	11804	Holder, Thread Guide and Cone
35	6	SF103238	Screw, Soc. Flat 10-32 X 3/8"
36	REF	11073	Strain Relief
38	1	11902	Assby, Pulley-Motor Timing
39	1	67275	Motor, 115 VAC w/ Mount (Hinge and Screws Included)
		67276	Motor, 220 VAC w/ Mount (Hinge and Screws Included)
40	1	11815	Thread Stand (8 oz. or 16 oz. Cone)
41	1	11805	Nut, Wing-Washer Base-1/4-20
	1	11190	Oil and Needles Kit (Not Shown)
	1	36069	Owners Manual and Warranty Card
44	1	WN8	Washer, Nylon #8
	1	1-147	MODEL F Tool Kit
45	1	PT8OZWHITE	Thread, Poly 8 Oz. Cone

From the library of: Diamond Needle Corp



**PLATE D**



FISCHBEIN® F SERIES PORTABLE SEWING MACHINES  
OPERATOR'S MANUAL

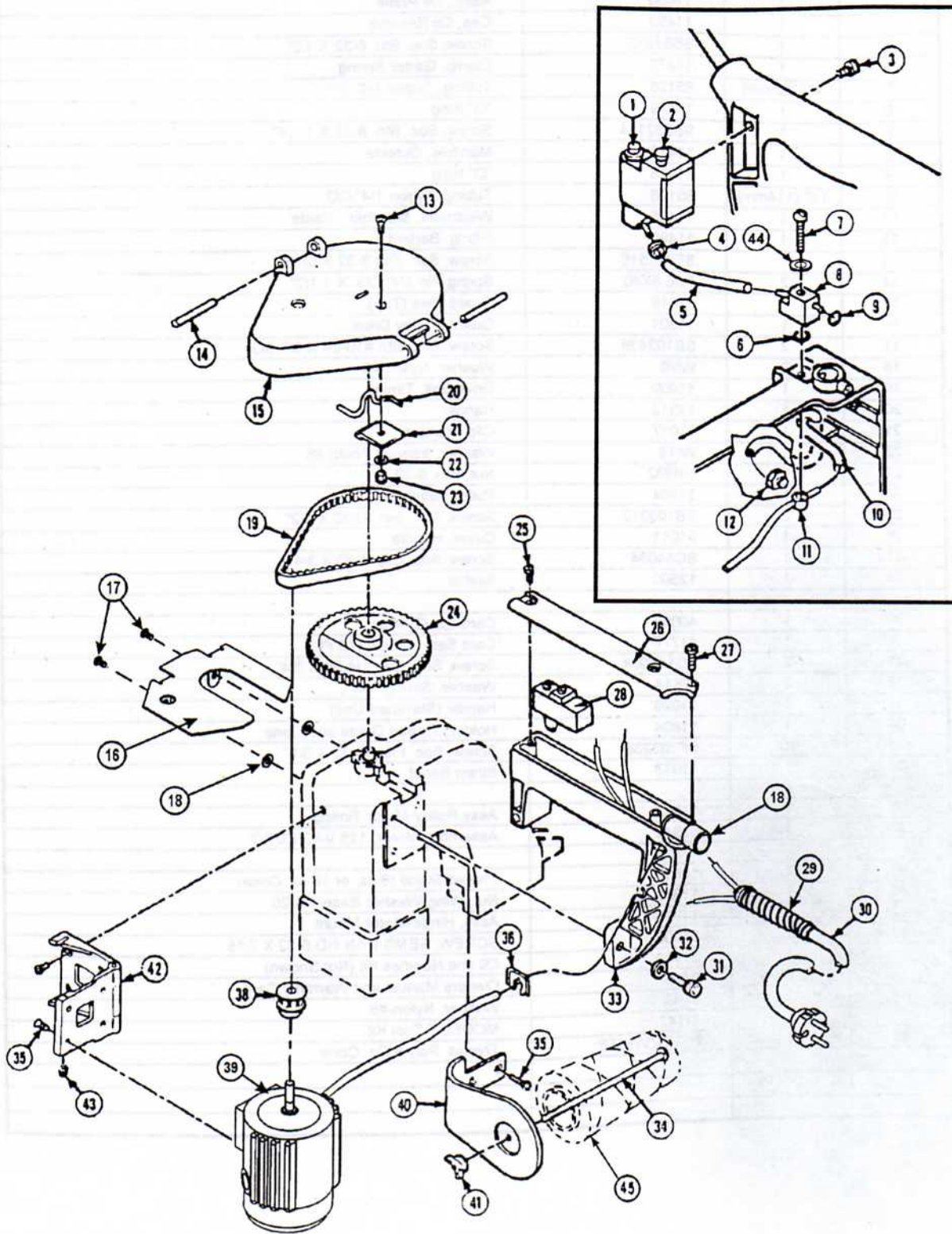
MODEL MODEL F HANDLE AND ELECTRIC DRIVE (with Euro Motor-115V ONLY)

Plate "D"

ITEM	QUAN.	PART NO.	DESCRIPTION
1	1	11450	Assy., Oil Pump
2	1	11453	Cap, Oil Reserve
3	1	SB83212	Screw, Soc. Btn. 8-32 X 1/2"
4	1	11472	Clamp, Garter Spring
5	4" (102mm)	85128	Tubing, Tygon 1/4" OD
6	1	11479	"O" Ring
7	1	SB832114	Screw, Soc. Btn. 8-32 X 1 1/4"
8	1	11475	Manifold, Outside
9	1	11478	"O" Ring
10	4.5" (114mm)	85128	Tubing, Tygon 1/4" OD
11	1	11485	Weldment, Manifold - Inside
12	1	11490	Fitting, Barbed
13	1	SF832516	Screw, Soc. Flat 8-32 X 5/16"
14	2	PS6.6X40	Spring Pin 1/4" Dia. X 1 1/2"
15	1	11018	Guard, Belt (Top)
16	1	11801	Guard, Pulley Drive
17	2	SB102438	Screw, Soc Btnn #10-24 X 3/8 BO
18	2	WN8	Washer, Nylon #8
19	1	11909	Drive Belt, Timing
20	1	11012	Hanger
21	1	11017	Clip, Hanger
22	1	WIT8	Washer, Internal Tooth #8
23	1	NH832	Nut, Hex 8-32
24	1	11904	Pulley, Machine
25	2	SB103212	Screw, Soc. Set 10-32 X 1/2"
26	1	11011	Cover, Handle
27	1	SC44034	Screw, Soc. Cap 4-40 X 3/4"
28	1	12500	Switch
30	1	40066	Cord Set (2-wire)
	1	11777	Cord Set - 12 Volt (10 Ft.)
31	2	SC142034	Screw, Soc. Cap 1/4-20 X 3/4"
32	2	WS14	Washer, Spring 1/4"
33	1	11028	Handle (Standard Unit)
34	1	11804	Holder, Thread Guide and Cone
35	10	SF103238	Screw, Soc. Flat 10-32 X 3/8"
36	1	11073	Strain Relief
38	1	11902	Assy, Pulley-Motor Timing
39	1	67842	Assembly, Motor, 115 VAC EURO
40	1	11815	Thread Stand (8 oz. or 16 oz. Cone)
41	1	11805	Nut, Wing-Washer Base-1/4-20
42	1	11906	Assy, Hinge-Motor Mount
43	2	11908	SCREW, SEMS-PAN HD 6-32 X 7/16
	1	11190	Oil and Needles Kit (Not Shown)
	1	36069	Owners Manual and Warranty Card
44	1	WN8	Washer, Nylon-#8
	1	1-147	MODEL F Tool Kit
45	1	PT8OZWHITE	Thread, Poly 8 Oz. Cone

From the library of: Diamond Needle Corp

**PLATE E**



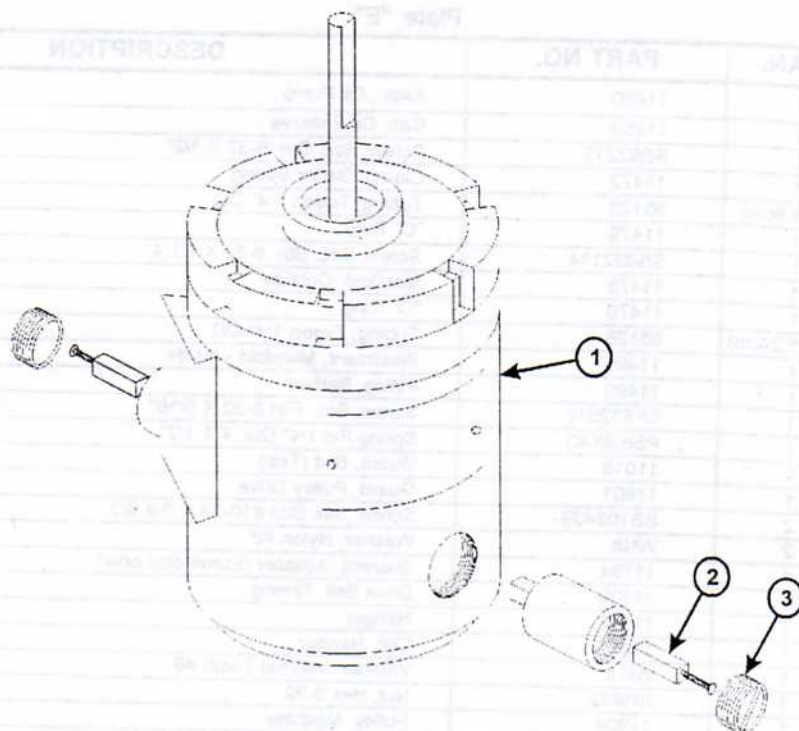
FISCHBEIN® F SERIES PORTABLE SEWING MACHINES  
OPERATOR'S MANUAL

MODEL MODEL F HANDLE AND ELECTRIC DRIVE (220V ONLY - Euromotor)  
Plate "E"

ITEM	QUAN.	PART NO.	DESCRIPTION
1	1	11450	Assy., Oil Pump
2	1	11453	Cap, Oil Reserve
3	1	SB83212	Screw, Soc. Btn. 8-32 X 1/2"
4	1	11472	Clamp, Garter Spring
5	0.3ft (8,9cm)	85128	Tubing, Tygon 1/4" OD
6	1	11479	"O" Ring
7	1	SB832114	Screw, Soc. Btn. 8-32 X 1 1/4"
8	1	11475	Manifold, Outside
9	1	11478	"O" Ring
10	0.5ft (15,24cm)	85128	Tubing, Tygon 1/4" OD
11	1	11485	Weldment, Manifold - Inside
12	1	11490	Fitting, Barbed
13	1	SF832516	Screw, Soc. Flat 8-32 X 5/16"
14	2	PS6.6X40	Spring Pin 1/4" Dia. X 1 1/2"
15	1	11018	Guard, Belt (Top)
16	1	11801	Guard, Pulley Drive
17	2	SB102438	Screw, Soc Btn #10-24 X 3/8 BO
18	2	WN8	Washer, Nylon #8
18	1	11784	Bushing, Adapter (Euromotor only)
19	1	11909	Drive Belt, Timing
20	1	11012	Hanger
21	1	11017	Clip, Hanger
22	1	WIT8	Washer, Internal Tooth #8
23	1	NH832	Nut, Hex 8-32
24	1	11904	Pulley, Machine
25	2	SB103212	Screw, Soc. Set 10-32 X 1/2"
26	1	11011	Cover, Handle
27	1	SC44034	Screw, Soc. Cap 4-40 X 3/4"
28	1	12500	Switch
29	1	40057	Fitting, Pigtail Liquid Tight PG-9
30	1	40058	Cord Set
31	2	SC142034	Screw, Soc. Cap 1/4-20 X 3/4"
32	2	WS14	Washer, Spring 1/4"
33	1	11028	Handle (Standard Unit)
34	1	11804	Holder, Thread Guide and Cone
35	6	SF103238	Screw, Soc. Flat 10-32 X 3/8"
36	REF	11073	Strain Relief
38	1	11902	Assby, Pulley-Motor Timing
39	1	67753	Assembly, Motor, 220 VAC Euromotor
40	1	11815	Thread Stand (8 oz. or 16 oz. Cone)
41	1	11805	Nut, Wing-Washer Base-1/4-20
	1	11190	Oil and Needles Kit (Not Shown)
	1	36069	Owners Manual and Warranty Card
44	1	WN8	Washer, Nylon-#8
	1	1-147	MODEL F Tool Kitb
45	1	PT8OZWHITE	Thread, Poly 8 Oz. Cone

From the library of: Diamond Needle Corp

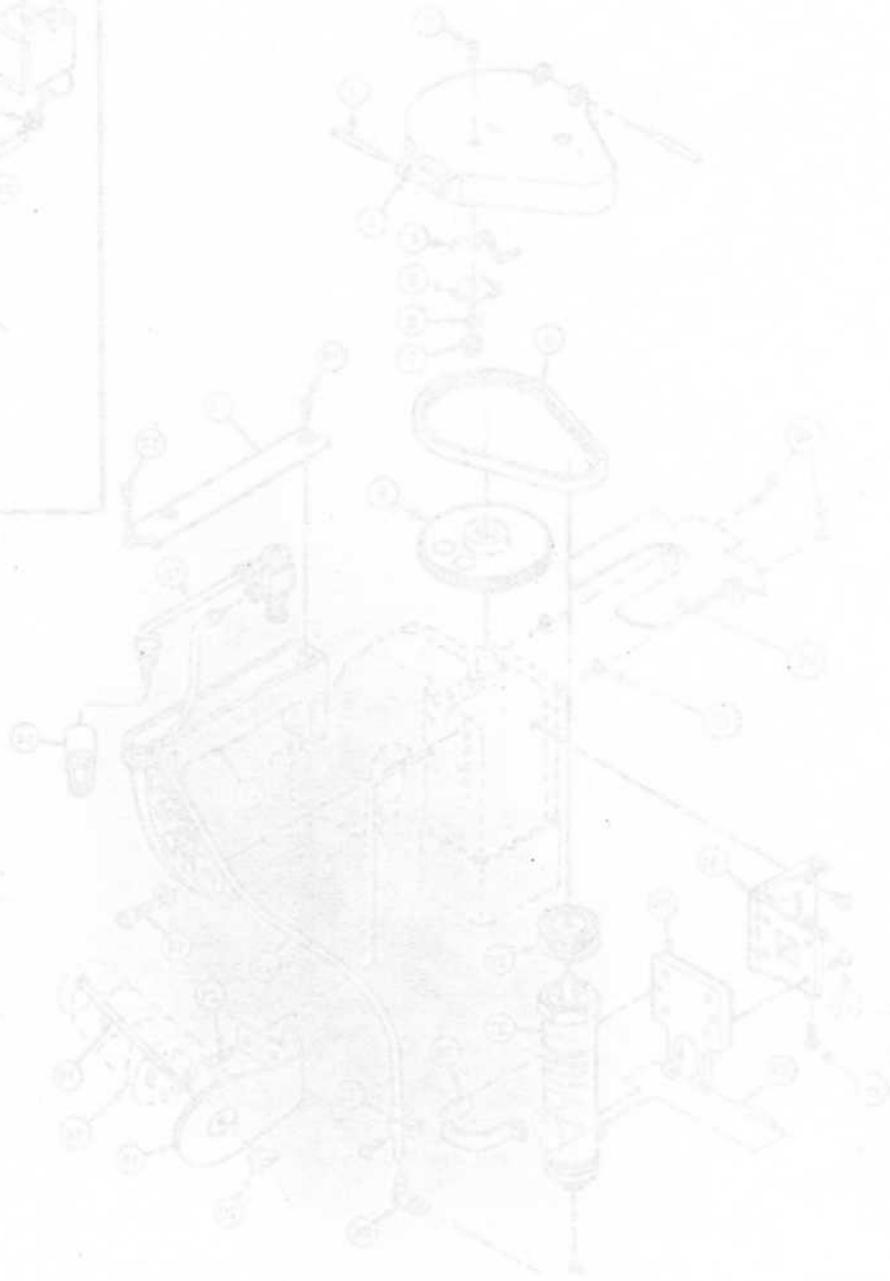
**PLATE F**



MODEL F DRIVE MOTOR			
PLATE "F"			
ITEM	QUANTITY	PART NO.	DESCRIPTION
1	1	67275	Motor, 115 VAC with Mount
1	1	67276	Motor, 220 VAC with Mount
1	1	67842	Motor, 115 VAC Euromotor
1	1	67753	Motor, 220 VAC Euromotor
1	1	67342	Motor, 12 VDC with Label
2	2	67277	Brush, Motor - For 115VAC (for motor 67275)
2	2	67277	Brush, Motor - For 220VAC (for motor 67276)
2	2	67277 - 2	Brush, Motor - For 12 VDC (for motor 67342)
2	2	67580	Brush, For 115 and 220VAC (for Baldor motors 67558, 67559)
3	2	67760	Brush Cap - Euromotor
3	2	67277	Brush, 1/6 HP (Euromotor)
	2	67037	Cap, Brush (for Baldor motors 67558)

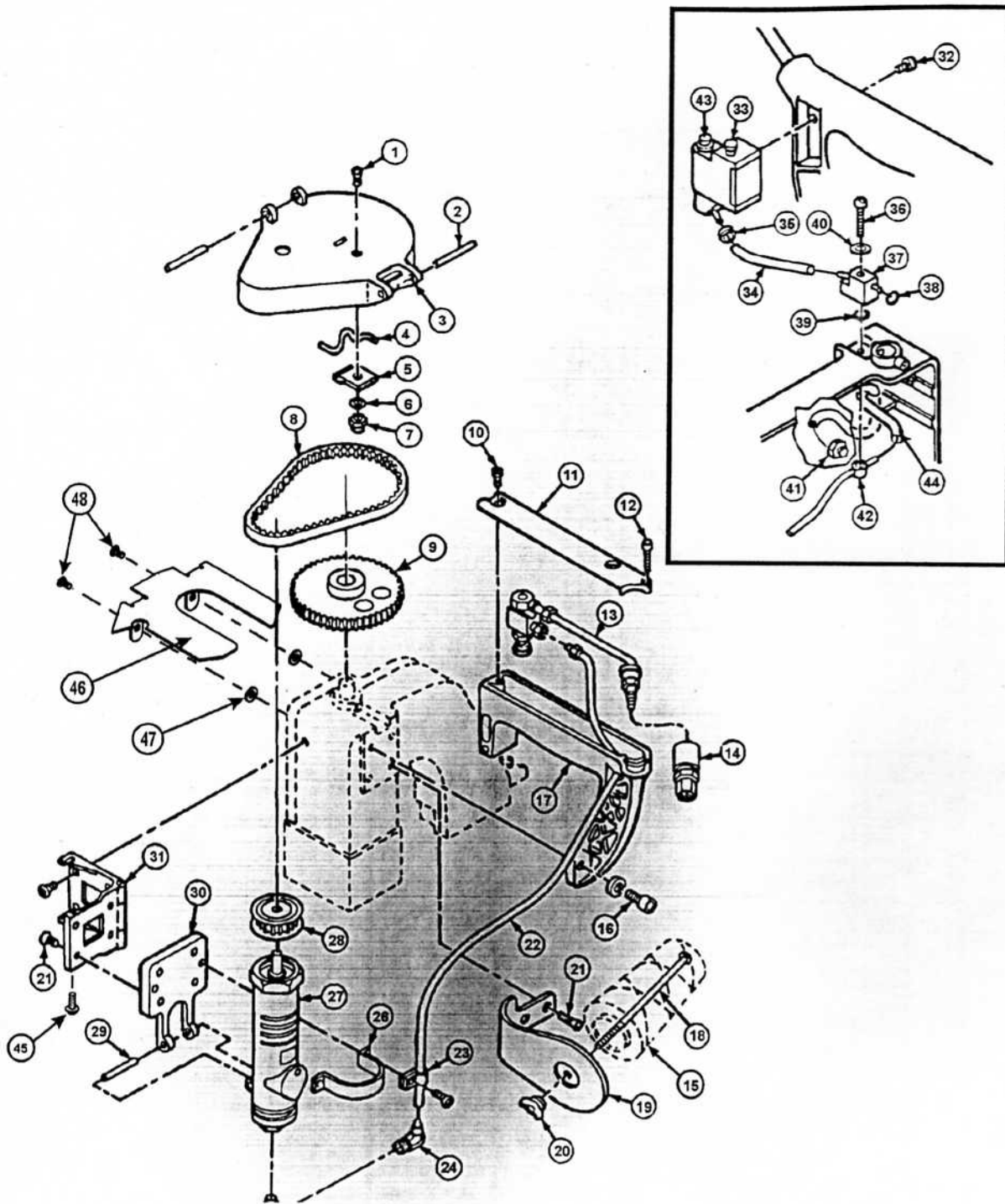
(Left Blank for Notes)

3-31-19

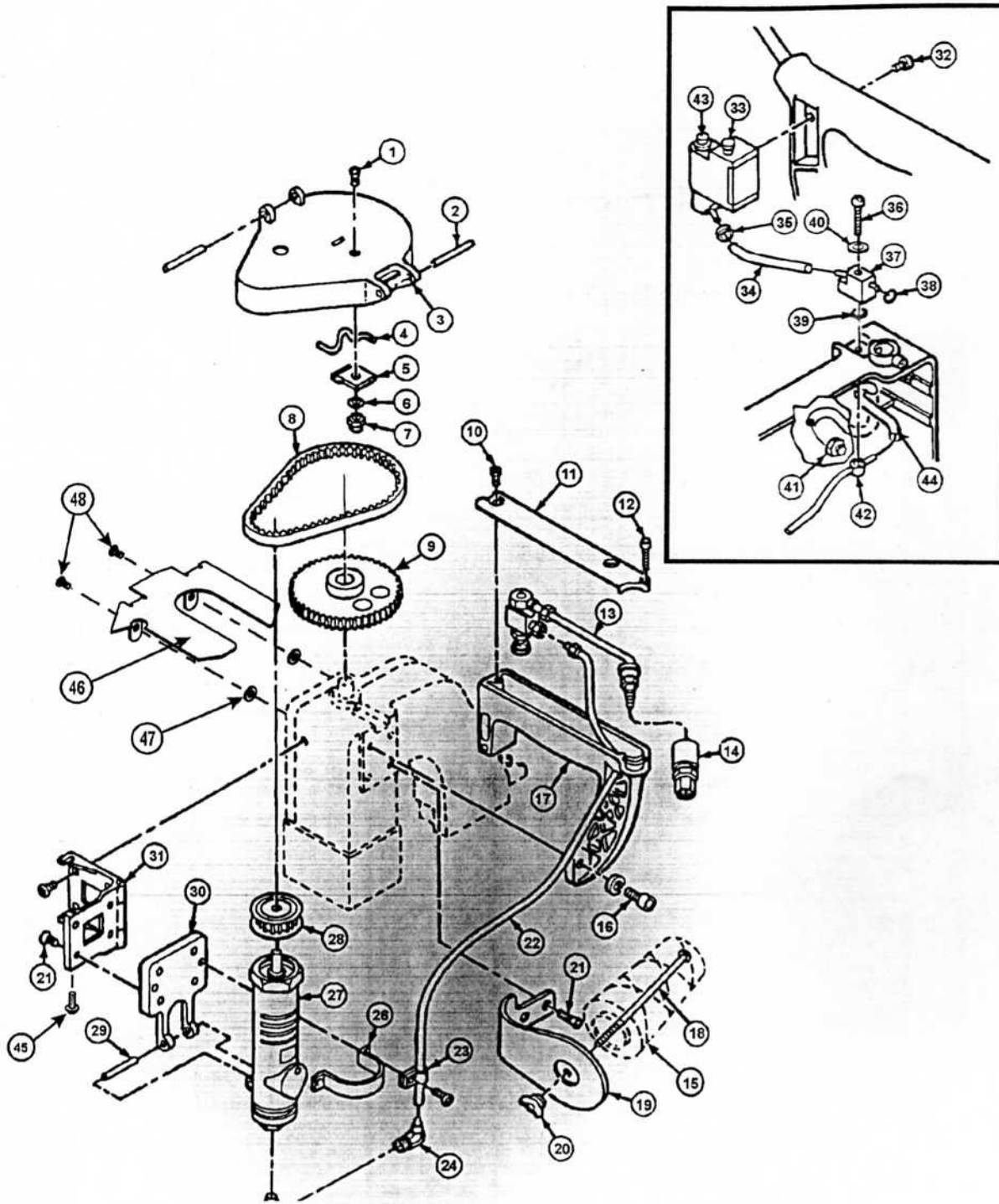


From the library of: Diamond Needle Corp

**PLATE G**



**PLATE G**





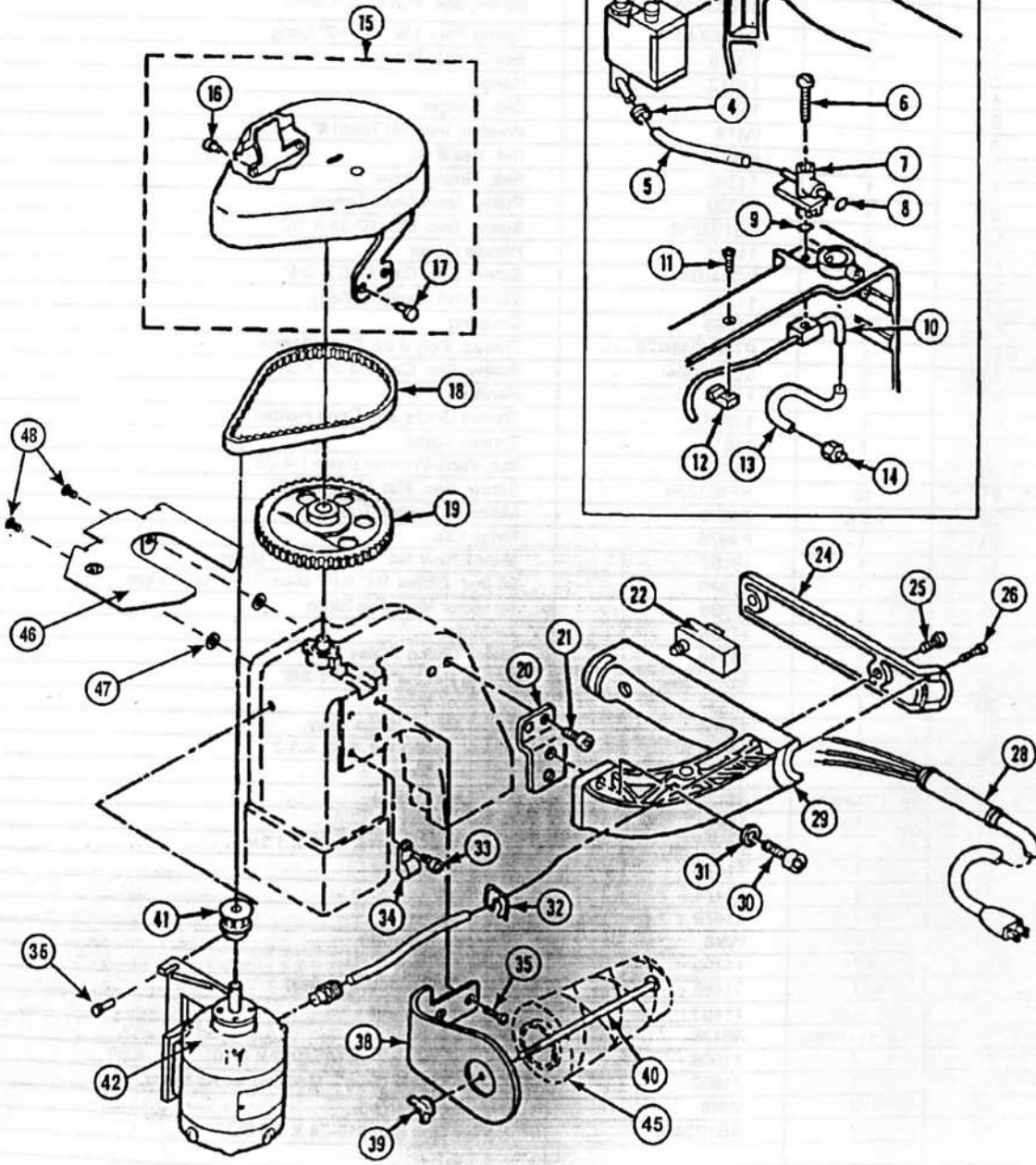
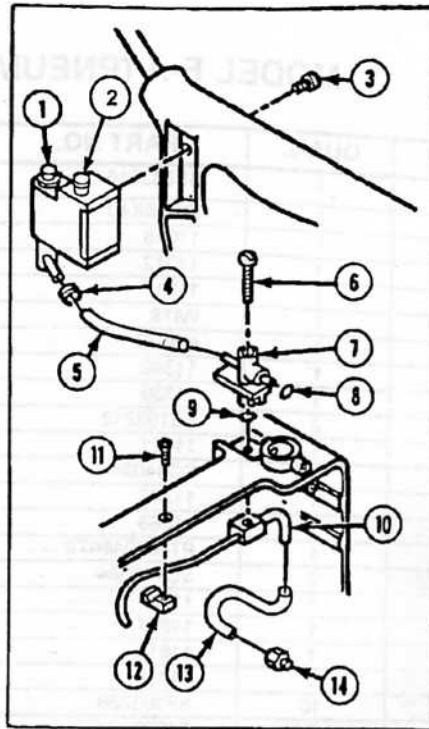
FISCHBEIN® F SERIES PORTABLE SEWING MACHINES  
OPERATOR'S MANUAL

MODEL F-A (PNEUMATIC) HANDLE AND DRIVE  
PLATE "G"

ITEM	QUAN.	PART NO.	DESCRIPTION
1	1	SF832516	Screw, Soc. Flat 8-32 X 5/16"
2	2	PS6.6X40	Spring Pin - 1/4" X 1 1/2" Long
3	1	11018	Belt Guard, Top
4	1	11012	Hanger
5	1	11017	Clip, Hanger
6	1	WIT8	Washer, Internal Tooth #*
7	1	NH832	Nut, Hex 8-32
8	1	11340	Belt, Timing Drive
9	1	11339	Pulley, Main Shaft Timing
10	2	SB103212	Screw, Soc. Btn. 10-32 X 1/2"
11	1	11011	Handle Cover
12	1	SC44034	Screw, Soc. Cap 4-40 X 3/4"
13	1	11327	Valve and Manifold Assy.
14	1	11863	Coupling
15	1	PT8OZWHITE	Thread, Poly 8 oz. Cone (White)
16	2	SC142034	Screw, Soc. Cap 1/4-20 X 3/4"
17	1	11326	Handle
18	1	11804	Thread Guide and Cone Holder
19	1	11815	Thread Stand
20	1	11805	Nut, Wing-Washer Base-1/4-20
21	10	SF103238	Screw, Soc. Flat 10-32 X 3/8"
22	1.5 ft.	P4969	Motor Air Supply Tubing
23	1	P4976	Nylon Clip
24	1	18107	Male Elbow 1/4" Pipe X 3/8" Tubing
25	1	11346	90 deg. Elbow 1/4" NPT Male X 1/4" NPT Fem.
26	1	11336	Air Motor Mounting Strap
27	1	11335	Air Motor
28	1	11338	Motor Timing Pulley
29	1	PS18138	Spring Pin 1/8" Dia. X 1 3/8"
30	1	11337	Air Motor Mount
31	1	11906	Motor Mount Hinge Assy.
32	1	B83212	Screw, Inding Hd. 8-32 X 1/2"
33	1	11450	Oil Pump Assy.
34	4" (102mm)	85128	Oil Pump Tubing
35	1	11472	Garter Spring
36	1	B832114	Screw, Binding Hd. 8-32 X 1 1/4"
37	1	11475	Outside Manifold
38	1	11478	"O" Ring
39	1	11479	"O" Ring
40		WN8	Washer, Nylon #8
41	1	11490	Barbed Fitting
42	1	11485	Inside Manifold Weldment
43	1	11453	Cap, Oil Reserve
44	4.5" (114mm)	85128	Plastic Tubing
45	2	11908	Screws, Sems-Pan HD 6-32 X 7/16
46	1	11802	Guard, Pulley Drive - Modified for Air Motor
47	2	WN8	Washer, Nylon #8
48	2	SB102438	Screw, Soc Btn #10-24 X 3/8 BO

From the library of: Diamond Needle Corp

PLATE H



FISCHBEIN® F SERIES PORTABLE SEWING MACHINES  
OPERATOR'S MANUAL

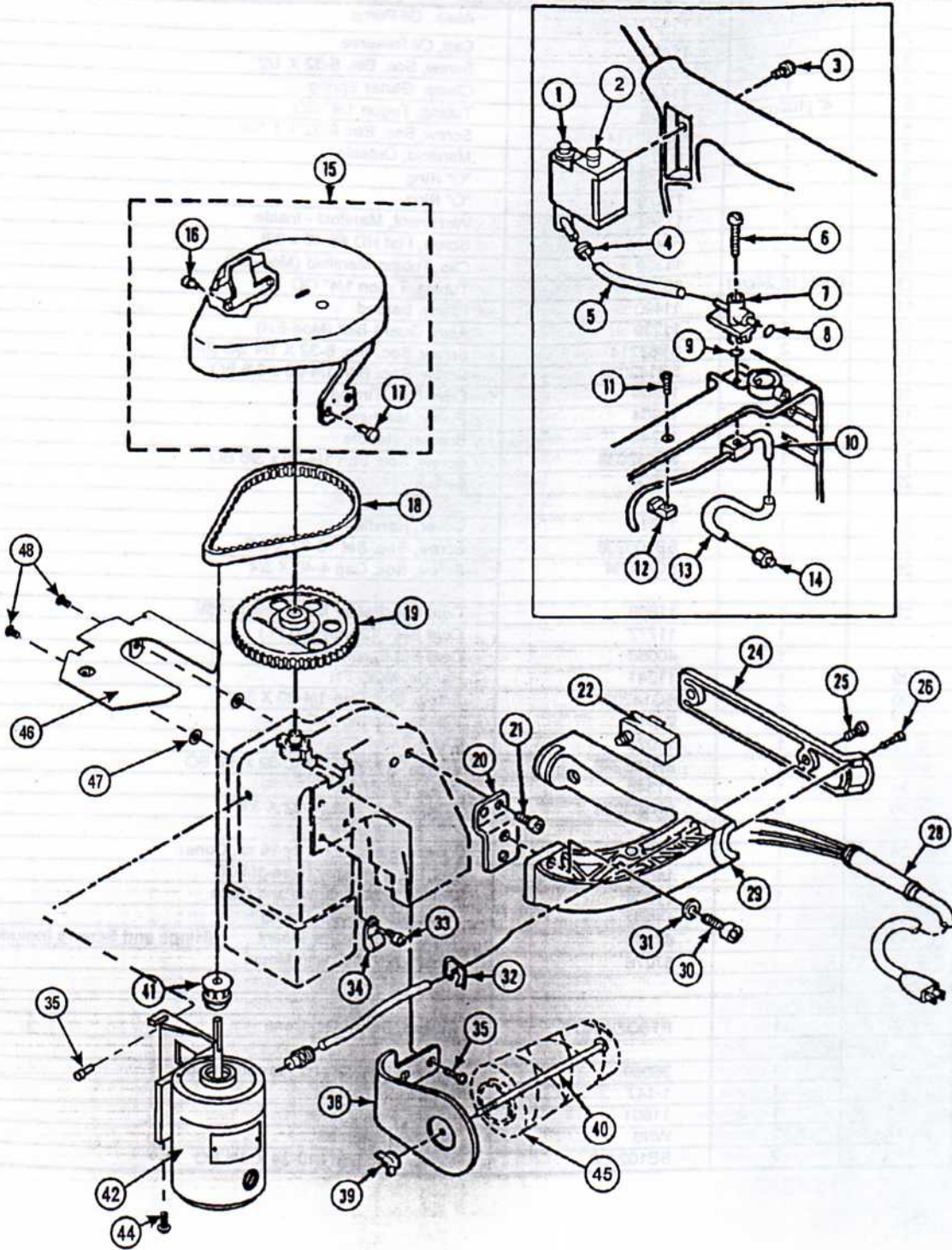
MODEL MODEL F- FH HANDLE AND ELECTRIC DRIVE

Plate "H"

ITEM	QUAN.	PART NO.	DESCRIPTION
1	1	11450	Assy., Oil Pump
2	1	11453	Cap, Oil Reserve
3	1	SB83212	Screw, Soc. Btn. 8-32 X 1/2"
4	1	11472	Clamp, Garter Spring
5	4" (102mm)	85128	Tubing, Tygon 1/4" OD
6	1	SB832114	Screw, Soc. Btn. 8-32 X 1 1/4"
7	1	11475	Manifold, Outside
8	1	11478	"O" Ring
9	1	11479	"O" Ring
10	1	11364	Weldment, Manifold - Inside
11	1	F64038	Screw, Flat HD #6-40 x 3/8
12	1	11359	Clip, Tubing-Manifold (Mod-EH)
13	0.5ft (15,24cm)	85128	Tubing, Tygon 1/4" OD
14	1	11490	Fitting, Barbed
15	1	11239	Assy, Guard-Belt (Mod-EH)
16	2	SB83214	Screw, Soc. Btn. 8-32 X 1/4 BO (SP)
17	2	SB142038	Screw, Soc. Btn 1/4-20 x 3/8 BO
18	1	11909	Drive Belt, Timing
19	1	11904	Pulley, Machine
20	1	11240	Bracket, Handle
21	1	SB142038	Screw, Soc. Btn 1/4-20 x 3/8 BO
22	1	12500	Switch
24	1	11011	Cover, Handle
25	2	SB103238	Screw, Soc. Set 10-32 X 3/8
26	1	SC44034	Screw, Soc. Cap 4-40 X 3/4"
28	1	11808	Cord Set (Baldor Motor only) 115V
	1	11777	Cord Set - 12 Voly (10 Ft.)
	1	40058	Cord Set Euromotor
29	1	11241	Handle, MOD FH
30	2	SC142034	Screw, Soc. Cap 1/4-20 X 3/4"
31	2	WS14	Washer, Spring 1/4"
32	1	11073	Strain Relief
33	1	SB103238	Screw, Soc. BTTN #10-32 x 3/8 BO
34	1	11348	Clip, Tube-Nylon
35	6	SF103238	Screw, Soc. Flat 10-32 X 3/8"
38	1	11815	Thread Stand (8 oz. or 16 oz. Cone)
39	1	11805	Nut, Wing-Washer Base-1/4-20
40	1	11804	Holder, Thread Guide and Cone
41	1	11902	Assy, Pulley-Motor Timing
42	1	67275	Motor, 115 VAC w/ Mount (Hinge and Screws Included)
		67276	Motor, 220 VAC with Mount
45	1	PT8OZWHITE	Thread, Poly 8 Oz. Cone
	1	36069	Owners Manual and Warranty Card
	1	1-147	MODEL F Tool Kit
46	1	11801	Guard, Pulley Drive
47	2	WN8	Washer, Nylon #8
48	2	SB102438	Screw, Soc Btn #10-24 X 3/8 BO

From the library of: Diamond Needle Corp

**PLATE I**



FISCHBEIN® F SERIES PORTABLE SEWING MACHINES  
OPERATOR'S MANUAL

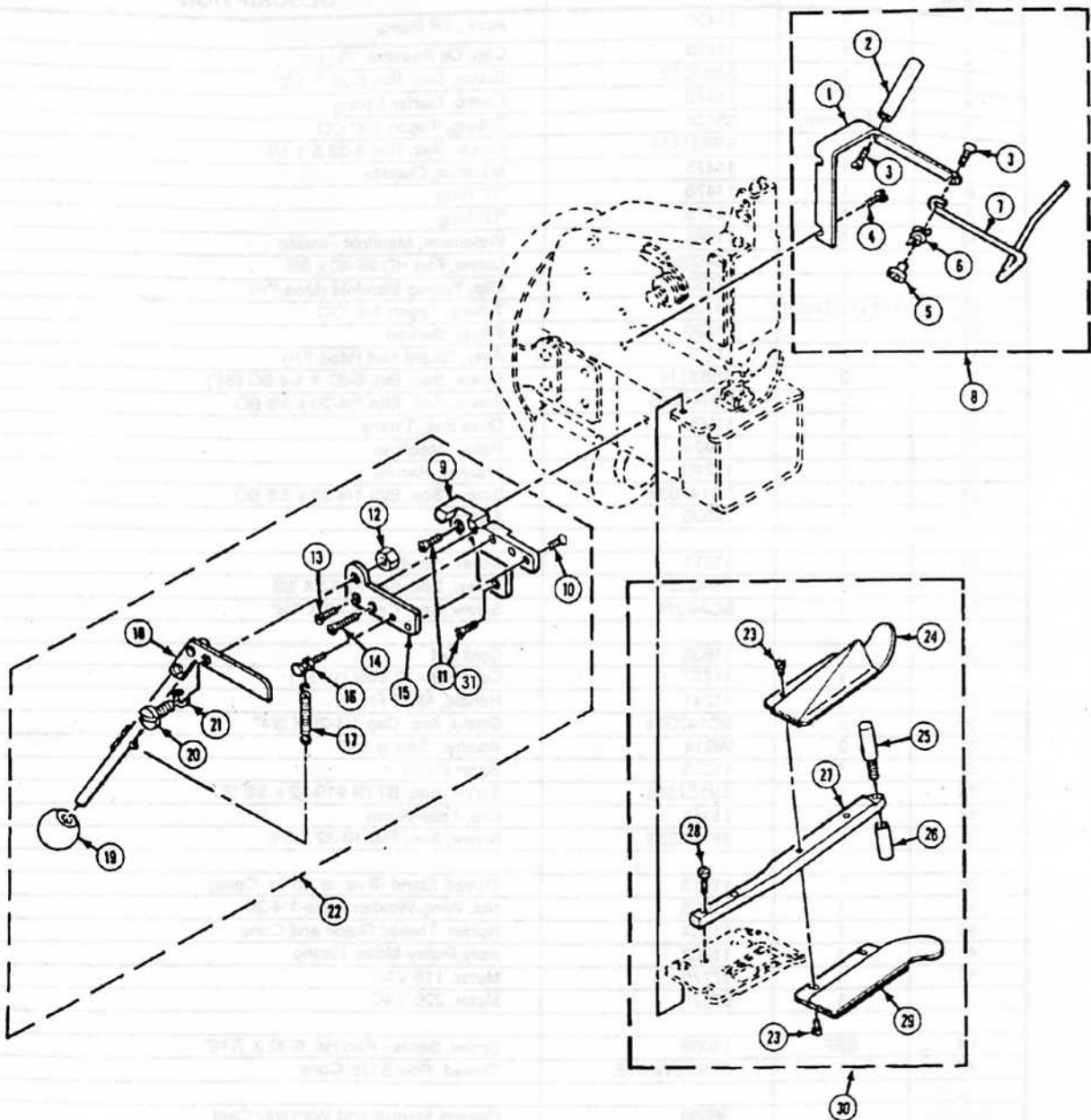
MODEL MODEL F- FH HANDLE AND ELECTRIC DRIVE

Plate "I"

ITEM	QUAN.	PART NO.	DESCRIPTION
1	1	11450	Assy., Oil Pump
2	1	11453	Cap, Oil Reserve
3	1	SB83212	Screw, Soc. Btn. 8-32 X 1/2"
4	1	11472	Clamp, Garter Spring
5	4" (102mm)	85128	Tubing, Tygon 1/4" OD
6	1	SB832114	Screw, Soc. Btn. 8-32 X 1 1/4"
7	1	11475	Manifold, Outside
8	1	11478	"O" Ring
9	1	11479	"O" Ring
10	1	11364	Weldment, Manifold - Inside
11	1	F64038	Screw, Flat HD #6-40 x 3/8
12	1	11359	Clip, Tubing-Manifold (Mod-FH)
13	0.5ft (15,24cm)	85128	Tubing, Tygon 1/4" OD
14	1	11490	Fitting, Barbed
15	1	11239	Assy, Guard-Belt (Mod-FH)
16	2	SB83214	Screw, Soc. Btn. 8-32 X 1/4 BO (SP)
17	2	SB142038	Screw, Soc. Btn 1/4-20 x 3/8 BO
18	1	11909	Drive Belt, Timing
19	1	11904	Pulley, Machine
20	1	11240	Bracket, Handle
21	1	SB142038	Screw, Soc. Btn 1/4-20 x 3/8 BO
22	1	12500	Switch
24	1	11011	Cover, Handle
25	2	SB103238	Screw, Soc. Set 10-32 X 3/8
26	1	SC44034	Screw, Soc. Cap 4-40 X 3/4"
28	1	11808	Cord Set
	1	11777	Cord Set - 12 Voly (10 Ft.)
29	1	11241	Handle, MOD FH
30	2	SC142034	Screw, Soc. Cap 1/4-20 X 3/4"
31	2	WS14	Washer, Spring 1/4"
32	1	11073	Strain Relief
33	1	SB103238	Screw, Soc. BTTN #10-32 x 3/8 BO
34	1	11348	Clip, Tube-Nylon
35	6	SF103238	Screw, Soc. Flat 10-32 X 3/8"
38	1	11815	Thread Stand (8 oz. or 16 oz. Cone)
39	1	11805	Nut, Wing-Washer Base-1/4-20
40	1	11804	Holder, Thread Guide and Cone
41	1	11902	Assy, Pulley-Motor Timing
42	1	67275	Motor, 115 VAC
	1	67276	Motor, 220 VAC
44	REF	11908	Screw, Sems - Pan Hd. 6-32 X 7/16"
45	1	PT8OZWHITE	Thread, Poly 8 Oz. Cone
	1	36069	Owners Manual and Warranty Card
	1	1-147	MODEL F Tool Kit
46	1	11801	Guard, Pulley Drive
47	2	WN8	Washer, Nylon #8
48	2	SB102438	Screw, Soc Btn #10-24 X 3/8 BO

From the library of: Diamond Needle Corp

**PLATE J**



**NOTE: Tape Attachment Assembly #1650**  
Requires: Throat Plate #11212  
Presser Foot #11399

From the library of: Diamond Needle Corp

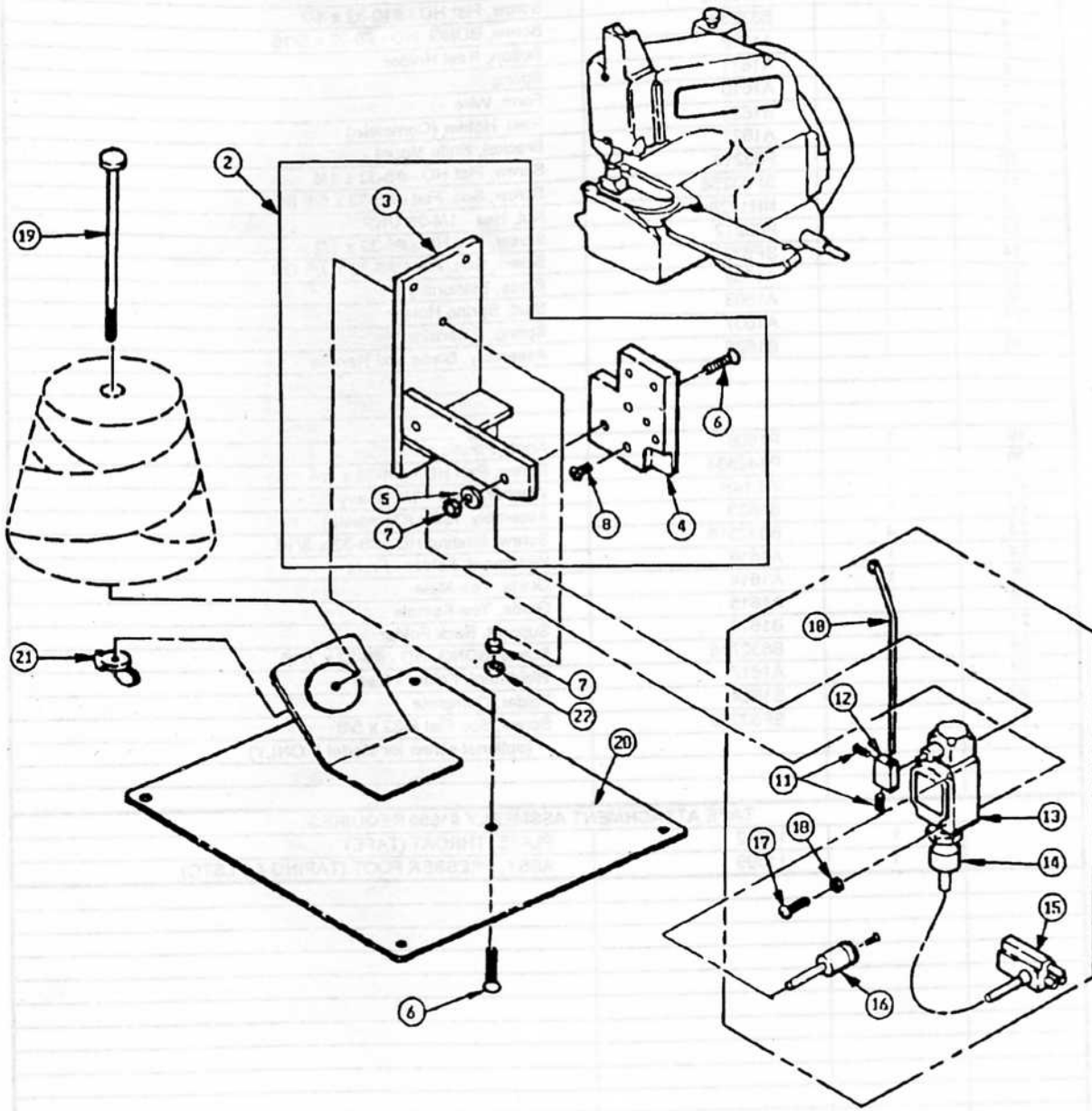
FISCHBEIN® F SERIES PORTABLE SEWING MACHINES  
 OPERATOR'S MANUAL

**MODEL MODEL F TAPE ATTACHMENT ASSEMBLY**

Plate "J"

ITEM	QUAN.	PART NO.	DESCRIPTION
1	1	A1608	Bracket, Holder Reel
2	1	A1609	Shaft, Holder Reel
3	2	F103212	Screw, Flat HD - #10-32 x 1/2
4	2	B83238	Screw, BDNG. HD - #8-32 x 5/16
5	1	A1612	Button, Reel Holder
6	1	A1611	Spring
7	1	A1610	Form, Wire
8	1	B1623	Reel, Holder (Complete)
9	1	A1627	Bracket, Knife Mount
10	1	F63214	Screw, Flat HD - #8-32 x 1/4
11	2	SF83258	Screw, Soc. Flat - #8-32 x 5/8 BO
12	1	NH1428	Nut, Hex - 1/4-28 UNF
13	1	F63212	Screw, Flat HD - #6-32 x 1/2
14	1	SF83278	Screw, Soc. Flat - #8-32 x 7/8 BO
15	1	A1602	Blade, Stationary
16	1	A1603	Stud, Spring Holder
17	1	A1607	Spring, Extension
18	1	B1626	Assembly, Blade and Handle
19	1	P1606	Knob, Plastic
20	1	P142834	Screw, Pan HD - 1/4-28 x 3/4
21	1	WL14H	Washer, Lock - 1/4 Heavy
22	1	B1633	Assembly, Knife (Complete)
23	4	B832316	Screw, Binding HD - #8-32 x 3/16
24	1	A1616	Weldment, Folder - Front
25	1	A1614	Guide, Tee-Male
26	1	A1615	Guide, Tee-Female
27	1	B1613	Support, Back Folder
28	2	B832716	Screw, BDNG. HD - #8-32 x 7/16
29	1	A1617	Weldment, Folder - Rear
30	1	B1624	Folder, Complete
31	1	SF83258	Screw, Soc Flat 8-32 x 5/8 (optional screw for Model F ONLY)
<b>TAPE ATTACHMENT ASSMEBLY #1650 REQUIRES:</b>			
	1	11212	PLATE, THROAT (TAPE)
	1	11399	ASSY, PRESSER FOOT (TAPING & PLSTC)

**PLATE K**





## MODEL MODEL F HORIZONTAL STITCHER ASSEMBLY Plate "K"

ITEM	QUAN.	PART NO.	DESCRIPTION
2	1	A2455	Assembly, Bracket
3	1	A2457	Weldment, Bracket Mounting
4	1	A2458	Bracket, Mounting
5	2	WS14	Washer, Spring 1/4
6	4	SF14201	Screw, Soc Flat 1/4-20 x 1 BO
7	4	NJ1420	Nut, Hex Jam 1/4-20 UNC
8	1	SF83258	Screw, Soc Flat #8-32 x 5/8
10	1	A1845	Lever, Microswitch
11	2	SS103238	Screw, Soc Set #10-32 x 3/8 BO
12	1	A4366	Block, Lever - Microswitch
13	1	P2587	Switch, Actuator
14	1	P3476	Cordgrip, 1/2 NPT - 0.312-0.375
15	1	10-80	Cordset
16	1	A2589	Assembly, Safety Pin - Stitcher
17	2	SC1032112	Screw, Soc Cap #10-32 x 1 1/2 BO
18	2	WL10	Washer, Lock #10
19	1	10-41	Rod, Threaded Clamping
20	1	A2568	Weldment, Base-Mntg
21	1	11805	Nut, Wing-Washer Base - 1/4-20
22	2	WL14	Washer, Lock 1/4

From the library of: Diamond Needle Corp

## 10. SAFELY DISPOSING OF AN MODEL F

If a MODEL F sewing machine becomes damaged beyond repair or simply worn to a nonfunctional state after years of service, it should be put out of service only after it is safe to dispose of it. First, drain all the oil out of the machine. Dispose of the oil according to your appropriate local environmental regulations. After the oil has been drained and disposed of, bring the sewing head to a recycling center or metal scrap facility.

## 11. GLOSSARY

**AWG** – American Wire Gauge

**FPM** – Feet per minute

**MPM** – Meters per minute

**NEC** – National Electrical Code

**NEMA** – National Electrical Manufacturers' Association

**NFPA** – National Fire Protection Association

**RPM** – Revolutions Per Minute

## 10. COMO DESECHAR UNA MODEL F

Si la maquina de costura MODEL F se daña al punto de no poder repararse o simplemente después de años de servicio no funciona más, debe discontinuarse su uso. Primero drene todo el aceite que haya en la máquina. Deséchelo de acuerdo a las regulaciones ambientales locales. Después de remover y desechar el aceite, lleve el cabezal al centro de reprocesamiento para metales.

## 11. GLOSARIO

**AWG** – American Wire Gauge

**FPM** – Pies por minuto

**MPM** – Metros por minuto

**NEC** – National Electrical Code

**NEMA** – National Electrical Manufacturers' Association

**NFPA** – National Fire Protection Association

**RPM** – Revoluciones por minuto