

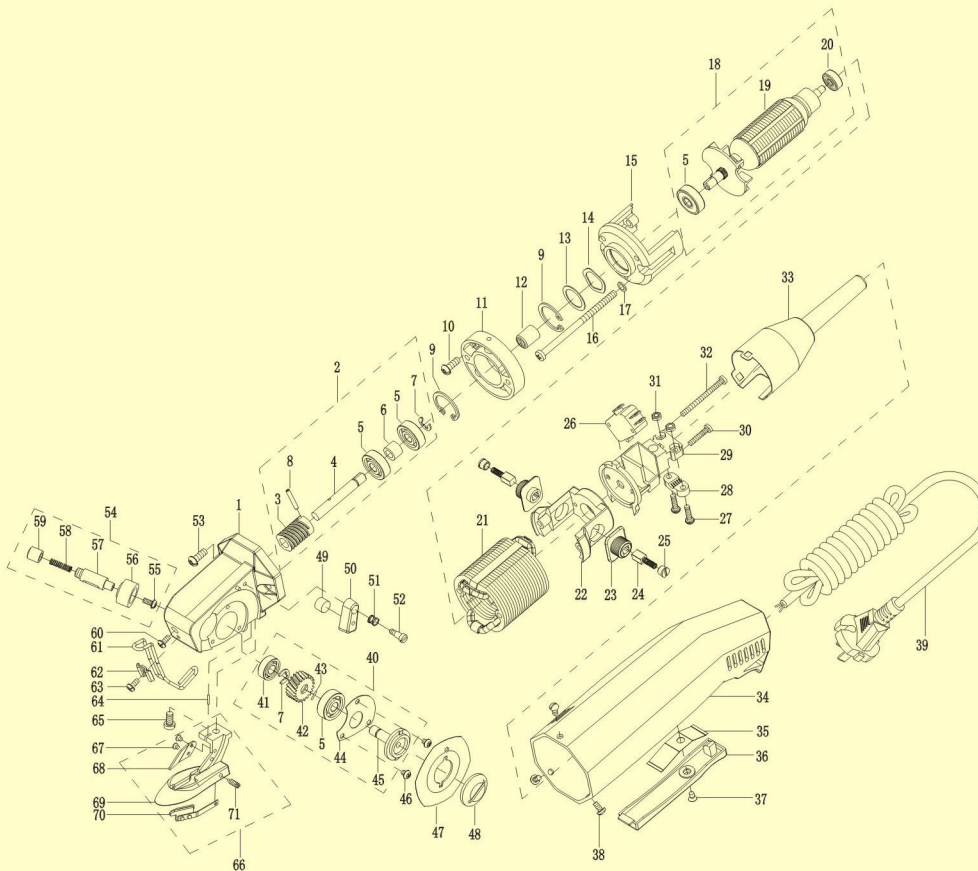
# 工業電剪

CLOTH CUTTING MACHINE

## YJ-50 (WD-2)



### YJ-50 Three Dimensional Assembly Picture



序号 Ref.no.	零件编号及名称 Part.no & Description	序号 Ref.no.	零件编号及名称 Part.no & Description
1	W1机头Gear Housing	37	W67开关跳螺钉Switch Cover Screw
2	W74蜗杆成套Drive Gear Assembly	38	W64电机外壳螺钉Screw
3	W32蜗杆Drive Gear	39	W68电源线Cord
4	W34蜗杆轴Drive Gear Shaft	40	W75蜗轮成套Worm Wheel Assembly
5	W5 62轴承Bearing	41	W2 696轴承Bearing
6	W36轴承隔套Spacer	42	W3蜗轮Worm Wheel
7	W38轴用挡圈Collar	43	W4轴销Spring Pin
8	W33蜗杆销Drive Gear Pin	44	W6蜗轮挡圈Cover Plate
9	W42孔用挡圈Collar	45	W8蜗轮轴Stepped Shaft
10	W39连接座螺钉Insulator Screw	46	W7挡圈螺钉Cover Plate Screw
11	W40连接座Insulator	47	W9六角刀片Side Knife
12	W41十字接Coupling	48	W10刀片帽Knife Lock Screw
13	W43平垫圈Undulated Washer	49	W28油毡Oil Felt
14	W44波形垫圈Flat Washer	50	W27润滑油Knife Oiler
15	W47风叶支架Holder For Motor Cooler	51	W29润滑油弹簧Spring For Oiler
16	W45风叶支架螺钉Screw For Motor Cooler	52	W30润滑油螺钉Screw For Oiler
17	W46螺钉垫圈Washer	53	W31机头螺钉Screw For Gear House
18	W70转子成套Rotor Assembly	54	W71砂轮成套Grind Assembly
19	W50转子Rotor	55	W11砂轮紧固螺钉Sharpening Stone Screw
20	W51轴承Bearing	56	W12砂轮Sharpening Stone
21	W48定子Stator	57	W13砂轮轴套Stepped Shaft
22	W52碳刷支架Carbon Brush Holder	58	W14弹簧Spring
23	W53碳刷套Carbon Brush Socket	59	W15砂轮按钮Push Button
24	W54碳刷Carbon Brush	60	W16砂轮轴套螺套Screw
25	W55碳刷帽Carbon Brush Cap	61	W17防护架Finger Guard
26	W57微动开关Tap Switch	62	W18防护架压块Finger Guard Pressing Block
27	W59压线块螺钉Crip Screw	63	W19防护架螺钉Finger Guard Screw
28	W58压线块Crip	64	W25压脚架螺钉Press Foot Pin
29	W56开关座Holder	65	W26压脚圆销Screw
30	W62开关座短螺钉Screw	66	W76压脚成套Press Foot Assembly
31	W60压线块螺母Nut	67	W19防护架螺钉Finger Guard Rivet
32	W61开关座长螺钉Screw	68	W21分布片Guide Plate
33	W63电源防护套Cord Cover	69	W20压脚Press Foot
34	W65电机外壳Fram	70	W23下刀Lower Knife
35	W69开关跳弹片Spring	71	W24下刀螺钉Lower Knife Screw
36	W66开关跳Switch Cover		

# 说明书

YJ-50 型电剪适用于服装、鞋帽、领带、制伞等企业使用。以剪断速度快、轻便灵活等特点。本机结构合理，功能齐全。

## 技术规格

刀片尺寸：φ50 毫米  
刀片转速：3500 转  
剪裁高度：10 毫米  
电压：单相110V~120V, 220V~240V  
功率：60瓦

## 一、一般使用与 装配

1.磨刀：启动电剪，轻按砂轮按钮(W15)砂轮 (W12)自动磨刀,保持刀片锋利。若砂轮油污过多，应先清除或更换后使用。

2.刀片装卸：将刀片 (W9) 孔旋止砂轮孔位置上，插入圆柱销用螺丝刀旋出或压紧刀片帽 (W10) 即可。

3.更换其它零件按立体装配图顺序进行。

## 二、保养要点

1.砂轮 (W12) 油污过多，应及时清除或更换，以保证有效磨刀，可保刀片锋利，减轻电机负担。

2.清除纤尘：刀片背后及电机内纤尘过多时应予以清除，以避免损坏电机。

3.蜗轮润滑：电剪正常使用,一个月后，应向机头背后注油孔注入润滑油脂。

4.刀片润滑：使用前先向润滑器、(W27)、油毡(W28) 注30#车油以减小刀片与下刀的摩擦。

5.更换电刷：经长期运转后，电刷 (W54) 磨损过半时，应断开电源更换电刷(若电动机运转不正常，立即停机检查电刷是否正常)。

## 三、勾布、卡布、裁断困难原因及排除

原 因	排 除
下刀(W23)或刀片 (W9) 有缺口或磨损过大	更 换
刀片与下刀位置、角度、弹力不正常	1.下刀卸下调整 2.下刀必须以最小的角度首先在刀片刃口上，弹力适度。
砂轮油污过多	除去砂轮油污或更换砂轮后，启动磨刀。

## 四、确保事宜

- 1.机器工作时必须使用本机相匹配电源并安全接地线，以防触电。
- 2.严禁将手或者身体其它部位接触高速运转的刀片。
- 3.在拆装机器零件时，一定要断开电源，以防触电。
- 4.严禁堵塞排风口。

## 附件清单

刀 片	1片	圆柱销	1条	十字接	2个	油 毡	1个
砂 轮	1个	电 刷	1付	润 滑 脂	1条		

# Direction

YJ-50 Type electric scissors is suitable for clothes, shoes and hats ties, umbrella enterprise. It can cut off quickly and is portable and flexible. This machine has reasonable structure and all the necessary function.

## Technical Specification:

Blade Size: φ50 mm  
Blade speed: 3500cycles  
Pruning height: 10 mm  
Voltage: single-phase 110V~120V, 220V~240V  
Power: 60 w

## 一、Common usage and assembling

1.Mill blade: start electric scissors , press abrasive button(W15) the abrasive wheel(W12)will Mill the blades automatically, to keep the blade sharp. If the abrasive wheel has more greasy dirt, should use it after cleaning or changing.

2.Blade load and unload: The blade is revolved to abrasive wheel hole , insert cylindrical pin to use flatt hand (appendix) to revolve out or compress blade hat (W10) .

3. Change other parts according to the order of three - dimensional assembly drawing.

## 二、Maintenance point

1. The abrasive wheel(W12)has more greasy dirt, it should be cleaned and changed in time to make sure of milling blade effectively and keep the blade sharp, reduce the shoulder of the electric machine.

2. Clean fine dirt: should clean the fine dirt behind the blade and in the electric machine to avoid damage.

3. Worm wheel lubricate: Normally use electric scissors, should put some drops grease to the oil hole. twice ~three times a month.

4. Blade lubricate: Before using , stakes 30 #oil to lubricative cotton to reduce the friction between the small blade and below blade.

5. Change the electric brush: After running for a long time , has damaged a half , should change the electric brush with the power cut off (if the electric motor is operating unnormally, please stop the machine at once to check the electric brush is normal).

## 三、The reason of cancelling cloth , blocking cloth and cut down hard and remove

Reason	Remove
below blade (W23)or blade (W9) has breach or damage	change
The position , angle and elasticity Between Blade and below blade	1.adjust blade below 2.Below blade must be leaned against the blade as min angle , suitable elasticity
Over greasy dirt of the abrasive wheel	Aftergetting rid of abrasive wheel greasy dirt ,start mill blade.

## 四、Make sure to:

- 1.Operating voltage must be normal and connect earth wire for safety, to avoid shock.
- 2.Do not touch the high speed moving blade with fingers or another body organ.
- 3.When to load and unload parts,the power plug must be pulled down. to avoid shock.
- 4.Forbid to plug the fanlight.

## Appendix list

blade	1 pc	cylindrical pin	1	connector	2	lubricative cotton	1
abrasive wheel	1 pc	electric brush	1	lubricative grease	1		