



HIGHLEAD

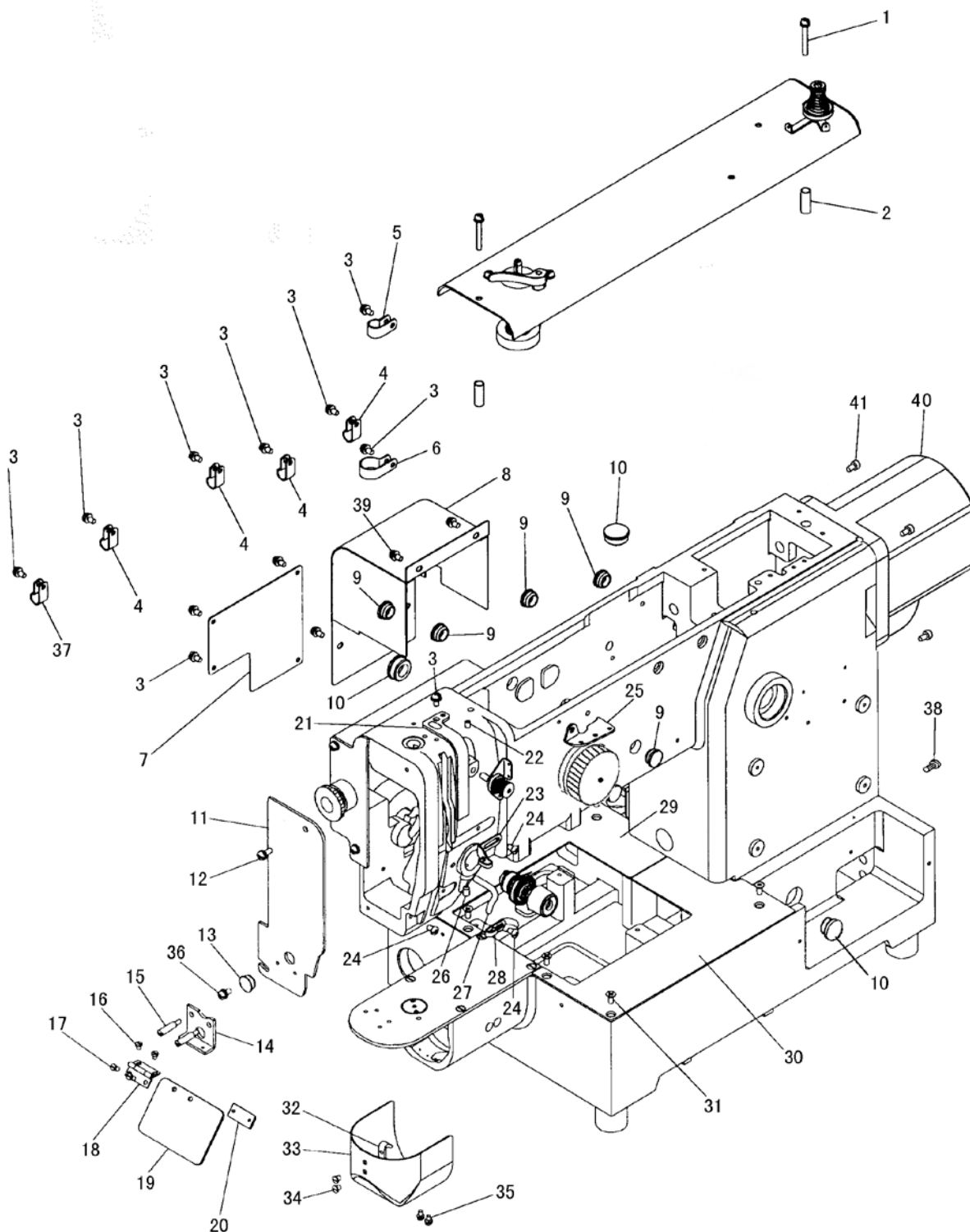
HLK-03

**ELECTRONIC DIRECT DRIVE BAR TACKER
MACHINE**

PARTS CATALOG

SHANGHAI HUIGONG NO.3 SEWING MACHINE FACTORY

A.ARM BED AND ITS ACCESSORIES (1)

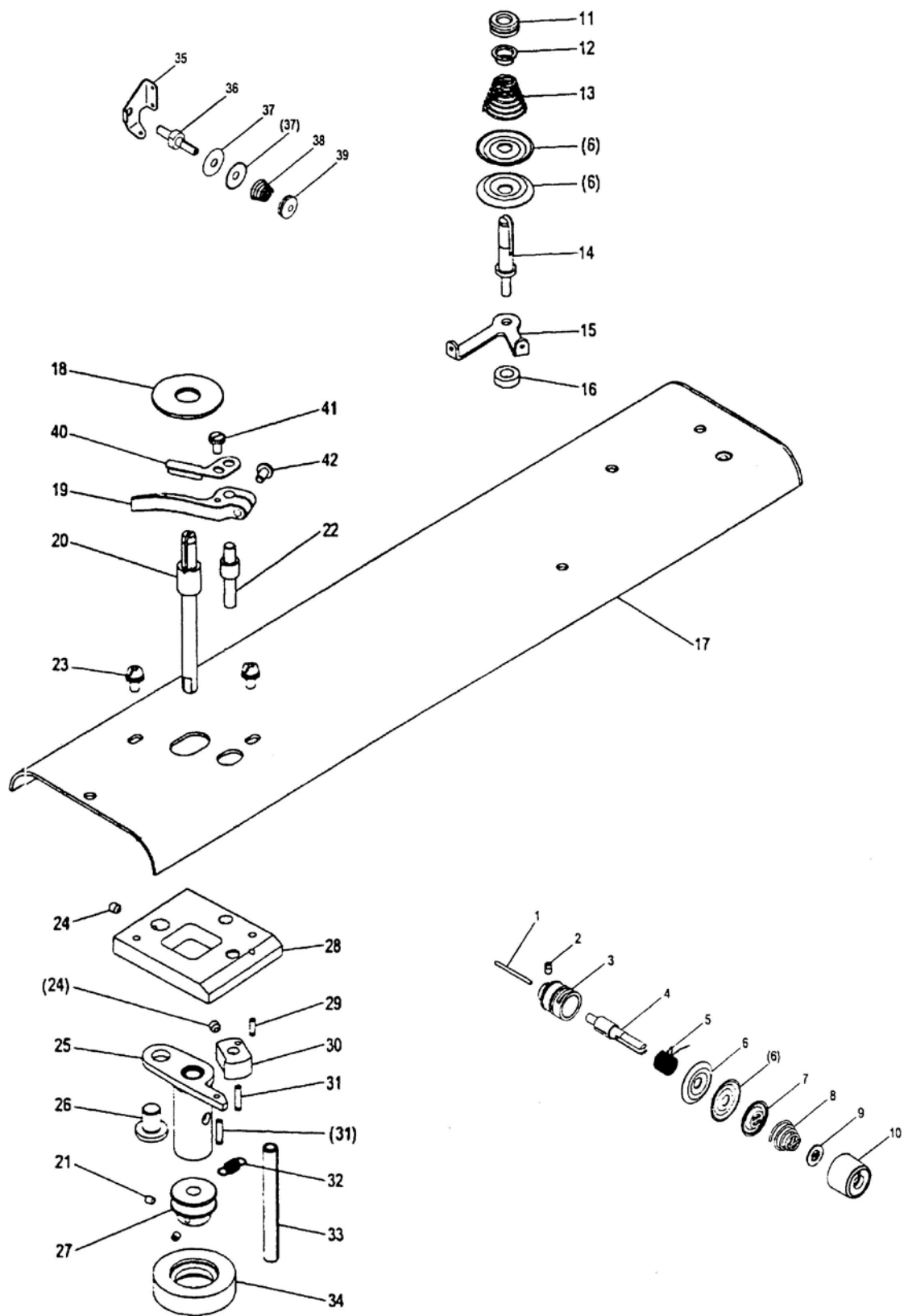


From the library of: Diamond Needle Corp

A.ARM BED AND ITS ACCESSORIES (1)

Fig. No.	Part No.	Description	Pcs.	Remarks
A01	HZ11040300	Screw M4 × 30	2	M4 × 30
A02	H6623B8001	Spacer	2	
A03	HZ11040080	Screw M4 × 8	12	M4 × 8
A04	H6650H8001	Nylon clip AB-5N	5	AB-5N
A05	H6648I8001	Nylon clip AB-6N	3	AB-6N
A06	H6647H8001	Nylon clip AB-10N	1	AB-10N
A07	H6611B8001	Cover	1	
A08	H6678B7101	Motor cover	1	
A09	H4715B8001	Rubber plug Φ 13	6	Φ 13
A10	HA307B0673	Rubber plug Φ 19	3	Φ 19
A11	H6676B8001	Face cover	1	
A12	HS90329935	Screw M4 × 10	1	M4 × 10
A13	HA307B0674	Rubber plug Φ 11.8	1	Φ 11.8
A14	H6668B8001	Eye guard bracket	1	
A15	H6669B8001	Pin	2	1/8 (44)
A16	H6670B8001	Screw 1/8(44) × 3.8	2	1/8(44) × 3.8
A17	HA104G0654	Screw 1/8(44) × 6	2	1/8(44) × 6
A18	H6671B8001	Hinge	1	
A19	H6674B8001	Eye guard	1	
A20	H6675B8001	Adapter	1	
A21	H6689B8001	Thread take-up lever guard	1	
A22	H431040060	Screw M4 × 6	1	M4 × 6
A23	HA600B2050	Thread guide	1	
A24	HZ11040060	Screw M4 × 6	4	M4 × 6
A25	HA700B2050	Thread guide	1	
A26	H431050080	Screw M5 × 8	1	M5 × 8
A27	H3000B2130	Thread guide	1	
A28	HA106B0675	Thread guide	1	
A29	H6684B8001	X Cover plate (L)	1	
A30	H6683B8001	X Cover plate (R)	1	
A31	HZ11040080	Screw M4 × 8	6	M4 × 8
A32	H6691B8001	Latch	1	
A33	H6693B8001	Cylinder cover	1	
A34	H6692B8001	Screw 9/64(40) × 3.2	2	9/64(40) × 3.2
A35	HZ11030060	Screw M3 × 6	2	M3 × 6
A36	H6623G8001	Screw M4 × 10	1	M4 × 10
A37	H6645H8001	Nylon clip AB-4N	1	AB-4N
A38	HS90201408	Screw M4 × 8	1	M4 × 8
A39	HZ11040080	Screw M4 × 8	6	M4 × 8
A40	HK42C58001	Motor cover	1	
A41	H415050200	Screw M5 × 20	4	M5 × 20

B.ARM BED AND ITS ACCESSORIES (2)

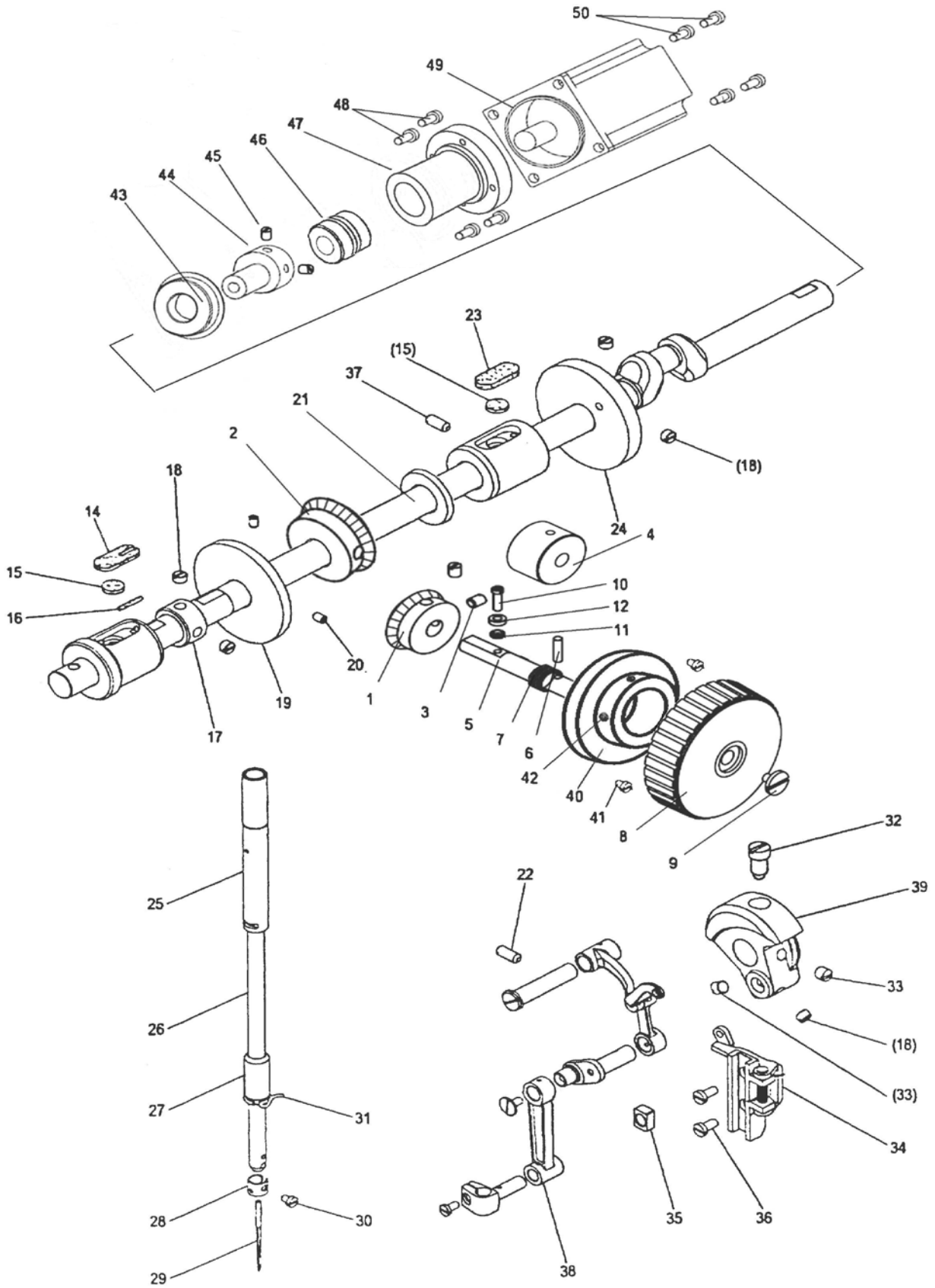


From the library of: Diamond Needle Corp

B.ARM BED AND ITS ACCESSORIES (2)

Fig. No.	Part No.	Description	Pcs.	Remarks
B01	HA115B0709	Pin	1	
B02	HA115B0708	Screw 9/64(40) × 4	1	
B03	HA310B0703	Regulator casing	1	
B04	HA115B0701	Thread tension stud	1	
B05	HA115B0706	Thread take-up spring	1	
B06	HA115B0705	Thread tension discs	4	
B07	HA310B0702	Disc retaining plate	1	
B08	H6675C8001	Thread tension spring	1	
B09	HA115B7010	Thumb nut revolution stopper	1	
B10	HA310B0701	Thumb nut	1	
B11	H660GB8001	Thumb nut	1	
B12	H660FB8001	Spring guide	1	
B13	H660EB8001	Thread tension spring	1	
B14	H660HB8001	Thread tension stud	1	
B15	H6662B8001	Thread guide	1	
B16	H6663B8001	Spacer	1	
B17	H6640B8001	Top cover	1	
B18	H6656B8001	Spacer	1	
B19	H6651B8001	Lever	1	
B20	HF15401022	Driven shaft	1	
B21	H431030040	Screw M3 × 4	2	M3 × 4
B22	H6649B8001	Shaft	1	
B23	HZ11040100	Screw M4 × 10	2	M4 × 10
B24	H431040040	Screw M4 × 4	2	M4 × 4
B25	HF15401021	Lever	1	
B26	H6650B8001	Pin	1	
B27	H6657B8001	Wheel	1	
B28	H6644B8001	Bracket	1	
B29	H6659B8001	Pin $\Phi 2.5 \times 8$	1	$\Phi 2.5 \times 8$
B30	H6652B8001	Cam	1	
B31	H6660B8001	Pin $\Phi 2.5 \times 12$	2	$\Phi 2.5 \times 12$
B32	H6653B8001	Spring	1	
B33	H6655B8001	Pin $\Phi 6 \times 56$	1	$\Phi 6 \times 56$
B34	H6658B8001	Tire	1	
B35	HA710B0674	Thread guide	1	
B36	HA710B0673	Thread tension stud	1	
B37	HA112B0693	Thread tension discs	2	
B38	HA710B0672	Thread tension spring	1	
B39	HA710B0671	Thumb nut	1	
B40	H662EB8001	Adjuster plate	1	
B41	H662DB8001	Screw 9/64(40) × 6.5	1	9/64(40) × 6.5
B42	H3100B2100	Screw 9/64(40) × 11	1	9/64(40) × 11

C.SEWING MECHANISM (1)



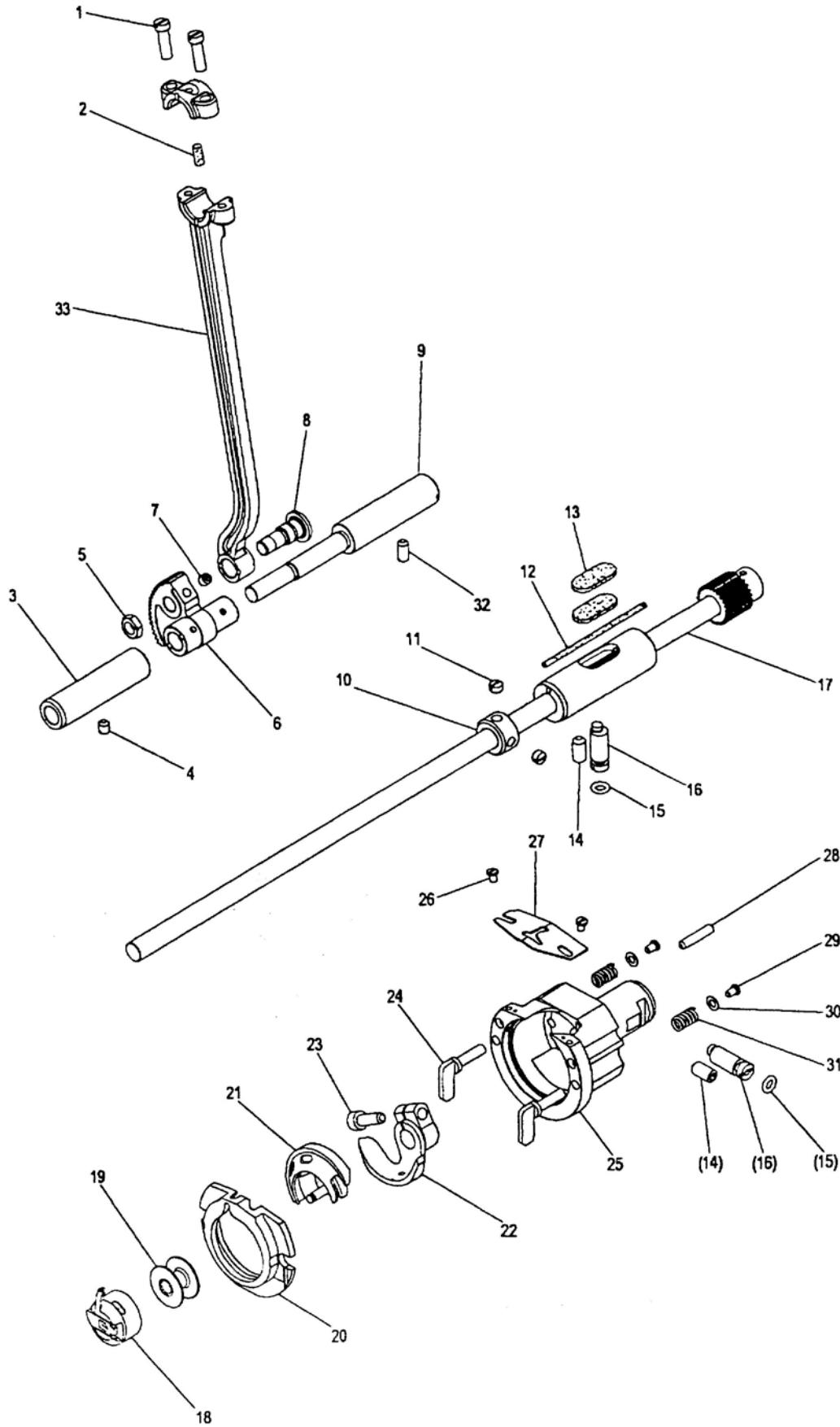
C.SEWING MECHANISM (1)

Fig. No.	Part No.	Description	Pcs.	Remarks
C01	HF113D2122	Bevel gear for hand wheel shaft	1	
C02	HF113D2112	Bevel gear for arm shaft	1	
C03	HA108C0663	Set screw	4	
C04	HF15401016	Hand wheel bushing	1	
C05	HF15401015	Hand wheel shaft	1	
C06	H609025120	Pin	1	Φ3 × 12
C07	H4767E8001	Spring	1	
C08	HB42E52081	Hand wheel	1	
C09	H5311F8001	Screw	1	
C10	HF15401013	Screw	1	
C11	HF15401012	Washer	1	
C12	HF15401014	Bearing	1	
C14	H2009B0743	Felt	1	
C15	H6616B8001	Felt	2	
C16	H2009B0742	Felt	1	
C17	HA108G0661	Collar	1	
C18	HA105D0662	Screw 1/4(40) × 4	5	1/4(40) × 4
C19	HF15402008	Pulley	1	
C20	H431040060	Screw M4 × 6	2	M4 × 6
C21	HM004C8001	Drive shaft	1	
C22	HS90101012	Screw M5 × 12	1	M5 × 12
C23	H2009B0731	Felt	1	
C24	H6606F8001	Thread trimmer cam	1	
C25	H6612B8001	Neddle bar bushing(upper)	1	
C26	H6624C8001	Neddle bar	1	
C27	H6613B8001	Neddle bar bushing(lower)	1	
C28	H6625C8001	Thread guide	1	
C29	HM010C8001	Neddle DP × 17#18	1	DP × 17#18
C30	HA100C2170	Screw 1/8(44) × 4.5	1	1/8(44) × 4.5
C31	HA300C2070	Thread guide	1	
C32	HA100C2070	Set screw 9/32(28)	1	9/32(28)
C33	HA307C0662	Screw 1/4(40) × 6	2	1/4(40) × 6
C34	HM005C7101	Guide assy	1	
C35	HA100C2200	Square block	1	
C36	H6623C8001	Screw M4 × 8	2	M4 × 8
C37	H901310010	Screw M5 × 10	1	M5 × 10
C38	H6611C7101	Thread take-up lever assy	1	
C39	H6607C8001	Crank	1	
C40	HF15401001	Set plate	1	
C41	H415050120	Screw M5 × 12	3	M5 × 12
C42	H3210F0681	Screw M5 × 6	2	M5 × 6
C43	H3205J0662	Bearing	1	6204Z ZNR
C44	HF15402001	Bushing	1	

C.SEWING MECHANISM (1)

Fig. No.	Part No.	Description	Pcs.	Remarks
C45	H431040060	Screw	2	
C46	HB2152C072	Clutch assy	1	
C47	HF15402002	Motor base	1	
C48	H415050200	Screw M5 × 20	4	M5 × 20
C49	HF15402003	Sevor motor	1	
C50	H415050200	Screw M5 × 16	4	M5 × 16

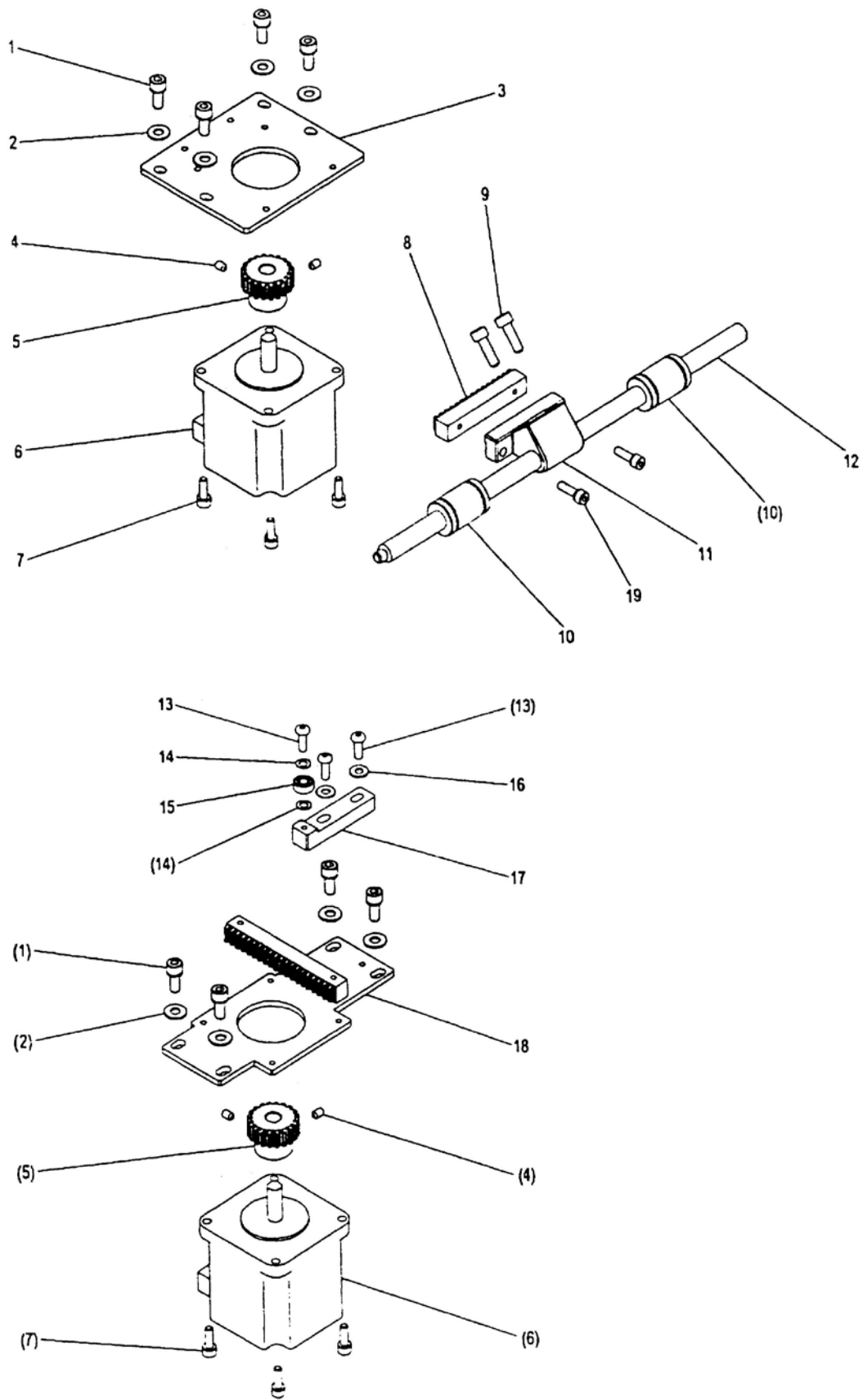
D.SEWING MECHANISM (2)



D.SEWING MECHANISM (2)

Fig. No.	Part No.	Description	Pcs.	Remarks
D01	HA304G0656	Screw 3/16(28) × 15	2	3/16(28) × 15
D02	H6634C8001	Felt	1	
D03	H6628B8001	Bushing	1	
D04	HS90101006	Screw M5 × 6	1	M5 × 6
D05	H2010J0066	Nut 9/32(28)	1	9/32(28)
D06	H6631C8001	Sector gear	1	
D07	H431050050	Screw M5 × 5	1	M5 × 5
D08	H6630C8001	Screw 9/32(28)	1	9/32(28)
D09	H6635C8001	Rock shaft	1	
D10	H6670C8001	Collar	1	
D11	HA305E0662	Screw 15/64(28) × 4.5	2	15/64(28) × 4.5
D12	H6627B8001	Oil braid	1	
D13	H2009B0743	Felt	2	
D14	HS90131112	Screw M6 × 12	2	M6 × 12
D15	HA115B7011	O-ring	2	
D16	H6648C8001	Eccentric shaft	2	
D17	H6637C7101	Hook shaft assy	1	
D18	H6655C8001	Bobbin case	1	SC181
D19	H6656C8001	Bobbin	1	
D20	H6674C8001	Hook retainer	1	
D21	H6673C8001	Inner hook	1	SH181
D22	H6654C8001	Hook driver	1	
D23	HS90321016	Bolt M5 × 16	1	M5 × 16
D24	H6646C8001	Hook clamp	2	
D25	H6642C8001	Outer hook	1	
D26	H6658C8001	Screw 1/8(40) × 4	2	1/8(40) × 4
D27	H6657C8001	Thread guide	1	
D28	H6651C8001	Pin M6-4 × 18	1	
D29	H6643C8001	Screw 1/8(44) × 4.5	2	1/8(44) × 4.5
D30	H6644C8001	Washer	2	
D31	H6645C8001	Spring	2	
D32	HS90101012	Screw M5 × 12	1	M5 × 12
D33	H6628C7101	Connecting rod assy	1	

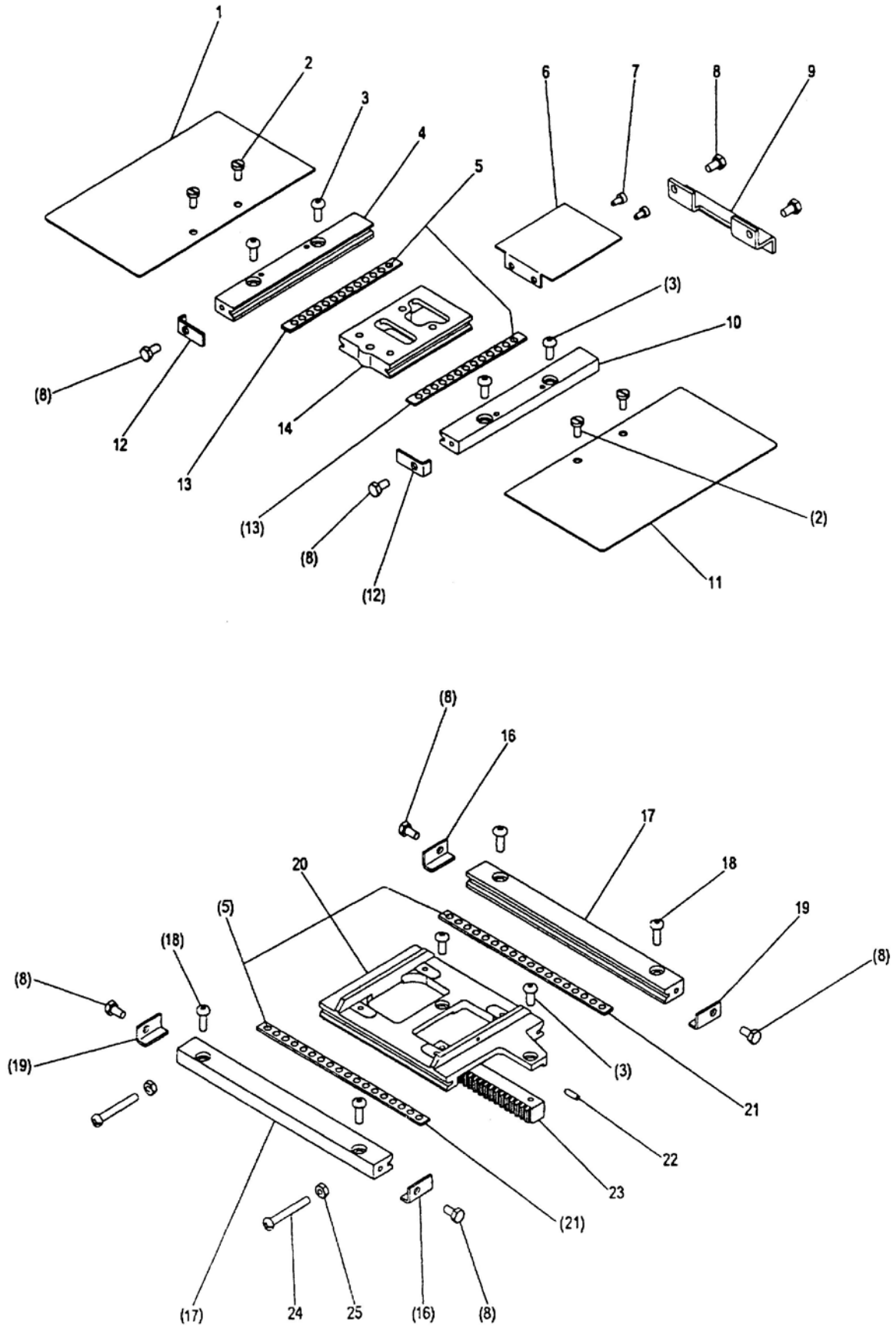
E.X-Y MECHANISM (1)



E.X-Y MECHANISM (1)

Fig. No.	Part No.	Description	Pcs.	Remarks
E01	H415050120	Bolt M5×12	8	M5×12
E02	H6686D8001	Washer 5	8	M5
E03	H6646D8001	Motor mounting plate Y	1	
E04	H431040060	Screw M4×6	4	M4×6
E05	H6631D8001	Pinion gear	2	
E06	HF15403010	Stepping motor	2	
E07	H415040120	Bolt M4×12	8	M4×12
E08	H6650D8001	Rack Y	1	
E09	H415050160	Bolt M5×16	2	M5×16
E10	H6623B8001	Ball bushing 10	2	M10
E11	H6649D8001	Rack adapter Y	1	
E12	H6653D8001	Linear shaft Y	1	
E13	H416040120	Bolt M4×12	3	M4×12
E14	H6684D8001	Washer 4	2	M4
E15	H6636D8001	Ball bearing	1	
E16	H6685D8001	Washer 4	2	M4
E17	H6635D8001	Bearing supporter	1	
E18	H6634D8001	Motor mounting palte X	1	
E19	H6693D8001	Bolt M4×14	2	M4×14

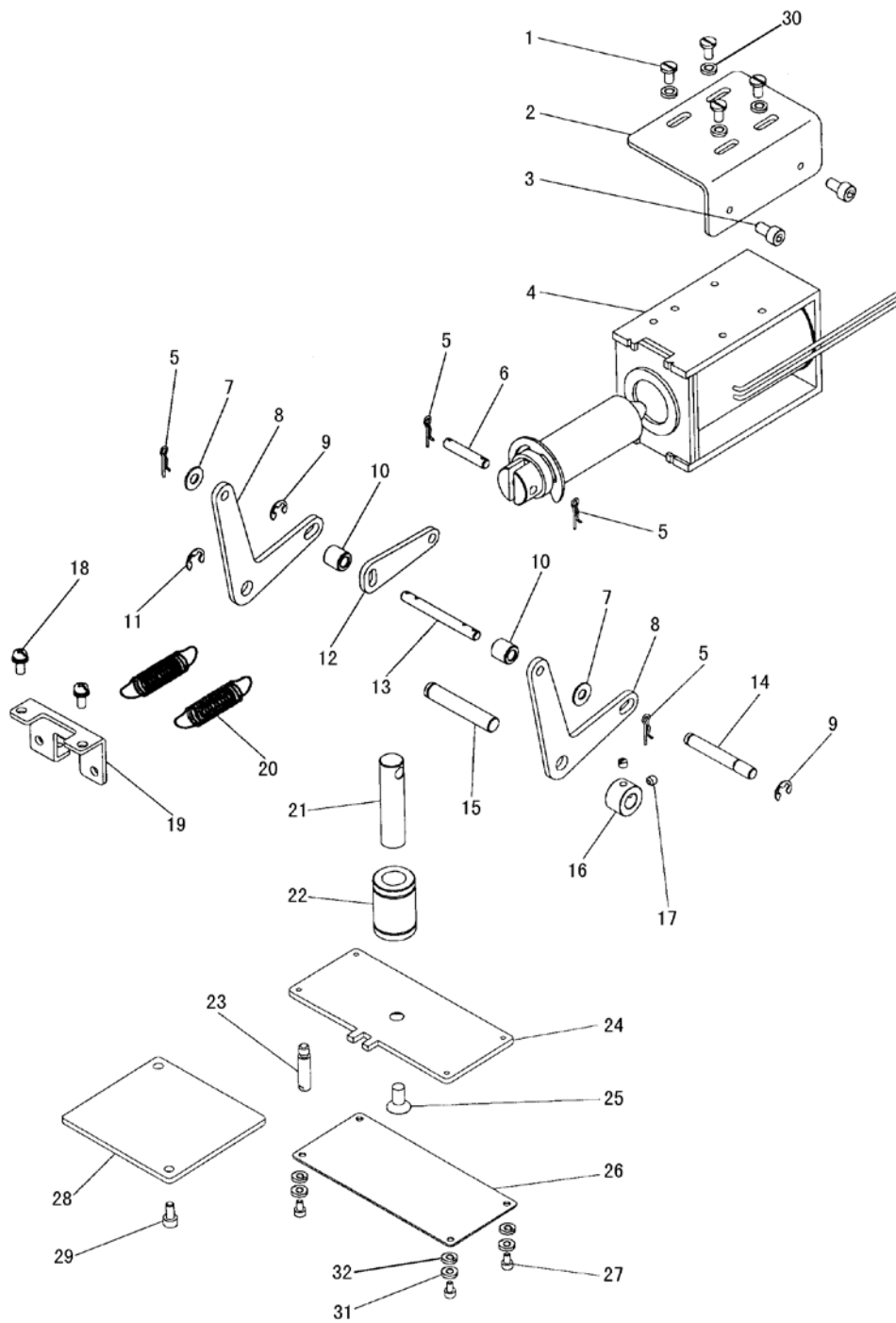
F.X-Y MECHANISM (2)



F.X-Y MECHANISM (2)

Fig. No.	Part No.	Description	Pcs.	Remarks
F01	H6685B8001	Cover L	1	
F02	HA70264C06	Screw 9/64(40) × 8	4	9/64(40) × 8
F03	H416040100	Bolt M4 × 10	6	M4 × 10
F04	H6615D8001	Fixed race Y(L)	1	
F05	H6618D8001	Steel ball 5/32	62	5/32
F06	H6623D8001	Cover plate Y	1	
F07	H415030060	Bolt M3 × 6	2	M3 × 6
F08	H103040080	Bolt M4 × 8	8	M4 × 8
F09	H6620D8001	Rear stopper Y	1	
F10	H6614D8001	Fixed race Y(R)	1	
F11	H6686B8001	Cover R	1	
F12	H6617D8001	Front stopper Y	2	
F13	H6613D8001	Retainer Y	2	
F14	H6619D8001	Movable race Y	1	
F16	H6611D8001	Stopper X	2	
F17	H6609D8001	Fixed race X	2	
F18	H416040120	Bolt M4 × 12	4	M4 × 12
F19	H6610D8001	Stopper X	2	
F20	H6606D8001	Movable race X	1	
F21	H6608D8001	Retainer X	2	
F22	H431030100	Screw M3 × 10	1	M3 × 10
F23	H6621D8001	Rack X	1	
F24	HZ11040300	Screw M4 × 30	2	M4 × 30
F25	H003001040	Nut M4	2	M4

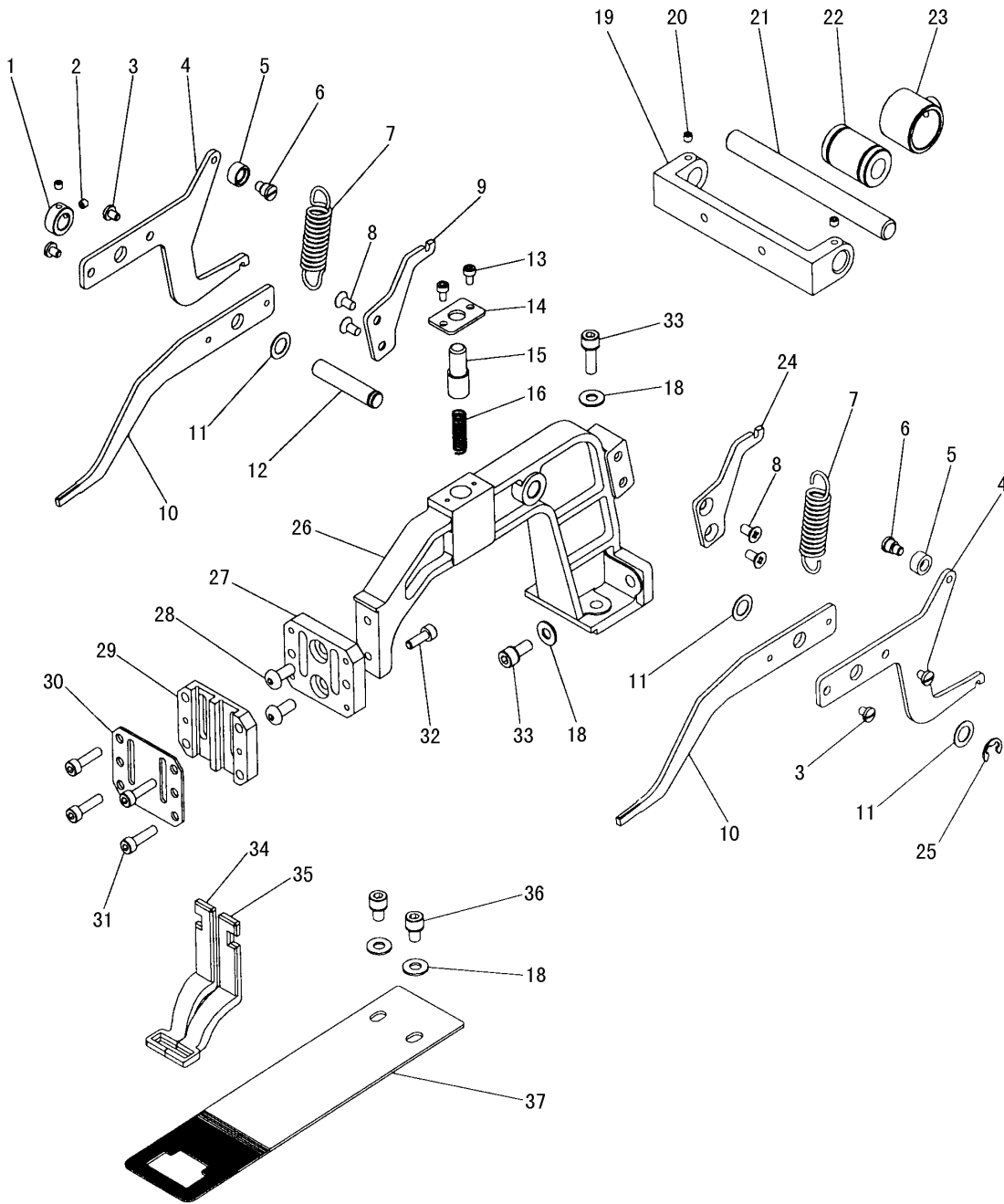
G.SOLENOID MECHANISM



G.SOLENOID MECHANISM

Fig. No.	Part No.	Description	Pcs.	Remarks
G01	HA700B2060	Screw 11/64 (40) ×8	4	11/64 (40) ×8
G02	H6608E8001	Bracket	1	
G03	HS90321010	Bolt M5×10	2	M5×10
G04	H6609E7101	Solenoid assy	1	
G05	H6618E8001	Snap pin R5	4	
G06	H6617E8001	Pin A	1	
G07	H6686D8001	Washer 5	2	5
G08	H6621E8001	Lever	2	
G09	H007013050	E-type retaining ring 5	2	E-5
G10	H6620E8001	Collar	2	
G11	H007013060	E-type retaining ring 6	1	E-6
G12	H6616E8001	link	1	
G13	H6619E8001	Pin B	1	
G14	H6629E8001	Pin C	1	
G15	H6625E8001	Pin D	1	
G16	H6627E8001	Collar	1	
G17	H3000D2030	Screw 11/64 (40)	2	11/64 (40)
G18	HA19039335	Screw M4×10	2	M4×10
G19	H6623E8001	Holder	1	
G20	H6622E8001	Spring	2	
G21	H6632E8001	Shaft	1	
G22	H6634B8001	Ball bushing	1	
G23	H6635E8001	Guide pin	1	
G24	H6633E8001	Pressure plate	1	
G25	HS90328112	Bolt M6×12	1	M6×12
G26	H662GE8001	Cover	1	
G27	HS90321902	Bolt M3×5	4	M3×5
G28	H6636E8001	Support plate	1	
G29	HS90329934	Bolt M4×8	2	M4×8
G30	H663FE8001	Washer 4	4	4
G31	H668CE8001	Washer 3	4	3
G32	H005008030	Spring washer 3	4	3

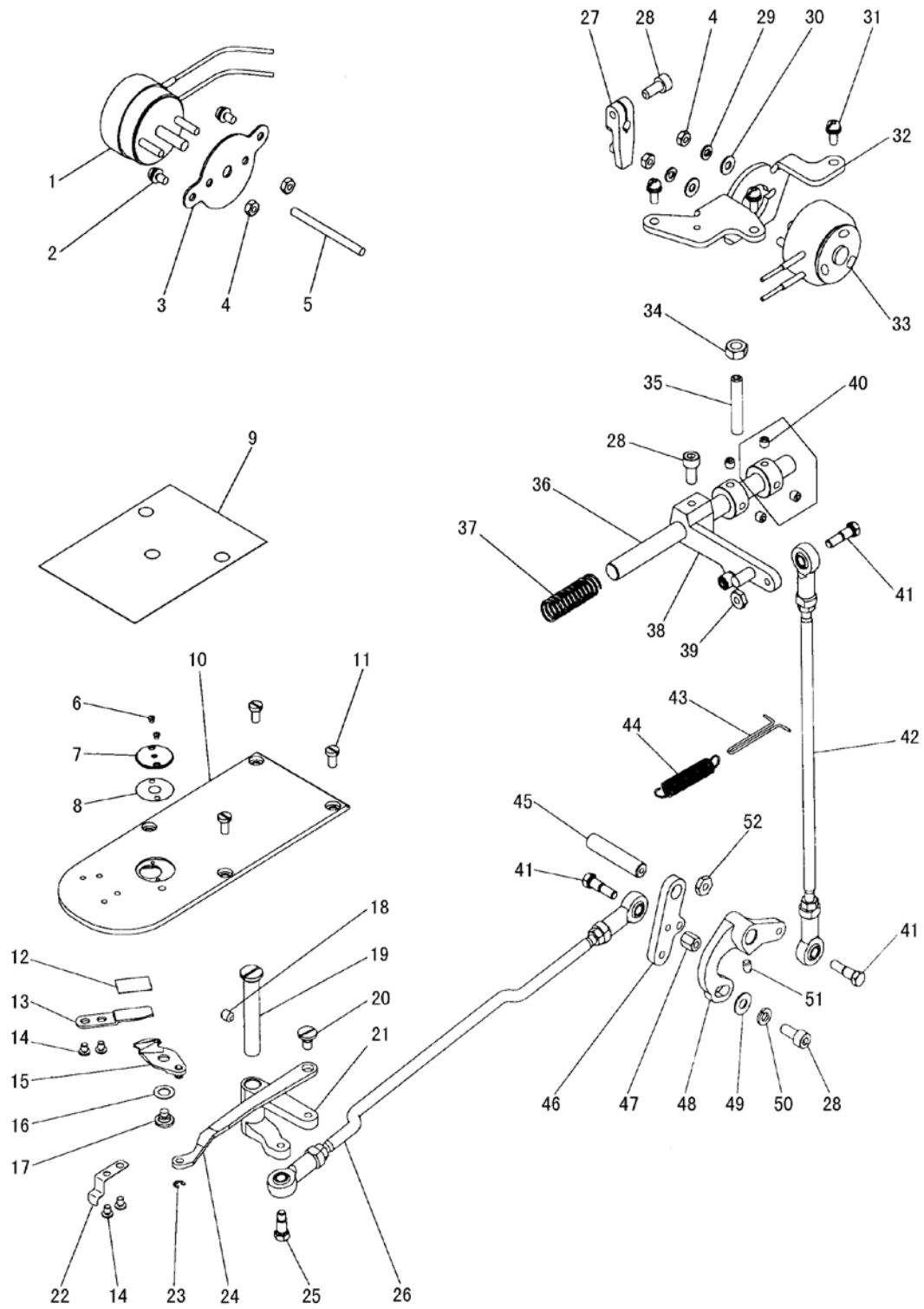
I.PRESSER FOOT MECHANISM



I.PRESSER FOOT MECHANISM

Fig. No.	Part No.	Description	Pcs.	Remarks
I01	HA712N0696	Collar	1	
I02	H3410C3019	Screw 9/64 (40) ×3.5	2	9/64 (40) ×3.5
I03	H6656E8001	Screw 9/64 (40) ×5	4	9/64 (40) ×5
I04	H6653E8001	Pressure lever	2	
I05	H6654E8001	Roller	2	
I06	H6655E8001	Screw 11/64 (40)	2	11/64 (40)
I07	H6651E8001	Spring	2	
I08	H660JB8001	Screw M4×8	4	M4×8
I09	H6649E8001	Spring hook L	1	
I10	H6657E8001	Pressure lever M	2	
I11	H6667E8001	Washer	3	
I12	H6666E8001	Pin	1	
I13	HS90321903	Bolt M3×6	2	M3×6
I14	H6646E8001	Hole plate	1	
I15	H6645E8001	Slider	1	
I16	H6693E8001	Spring	1	
I18	H6686D8001	Washer 5	6	5
I19	H6679E8001	Bracket	1	
I20	HS90131909	Screw M4×4	2	M4×4
I21	H6683E8001	Shaft	1	
I22	H6623B8001	Ball bushing 10	1	
I23	H6682E8001	Bearing housing	1	
I24	H6648E8001	Spring hook R	1	
I25	H007013060	E-type retaining ring 6	1	E- 6
I26	H6642E8001	Work holder arm	1	
I27	H6643E8001	Work holder guide base	1	
I28	HA19115502	Bolt M5×12	2	M5×12
I29	H6670E8001	Work holder guide	1	
I30	H6671E8001	Cover	1	
I31	HS90321938	Bolt M4×16	4	M4×16
I32	HS90321936	Bolt M4×12	2	M4×12
I33	HS90329012	Bolt M5×14	4	M5×14
I34	H6674E8001	Clamp foot L	1	
I35	H6673E8001	Clamp foot R	1	
I36	HA19041852	Bolt M5×8	2	M5×8
I37	H6685E8001	Feed plate	1	

J.THREAD TRIMMING MECHANISM



From the library of: Diamond Needle Corp

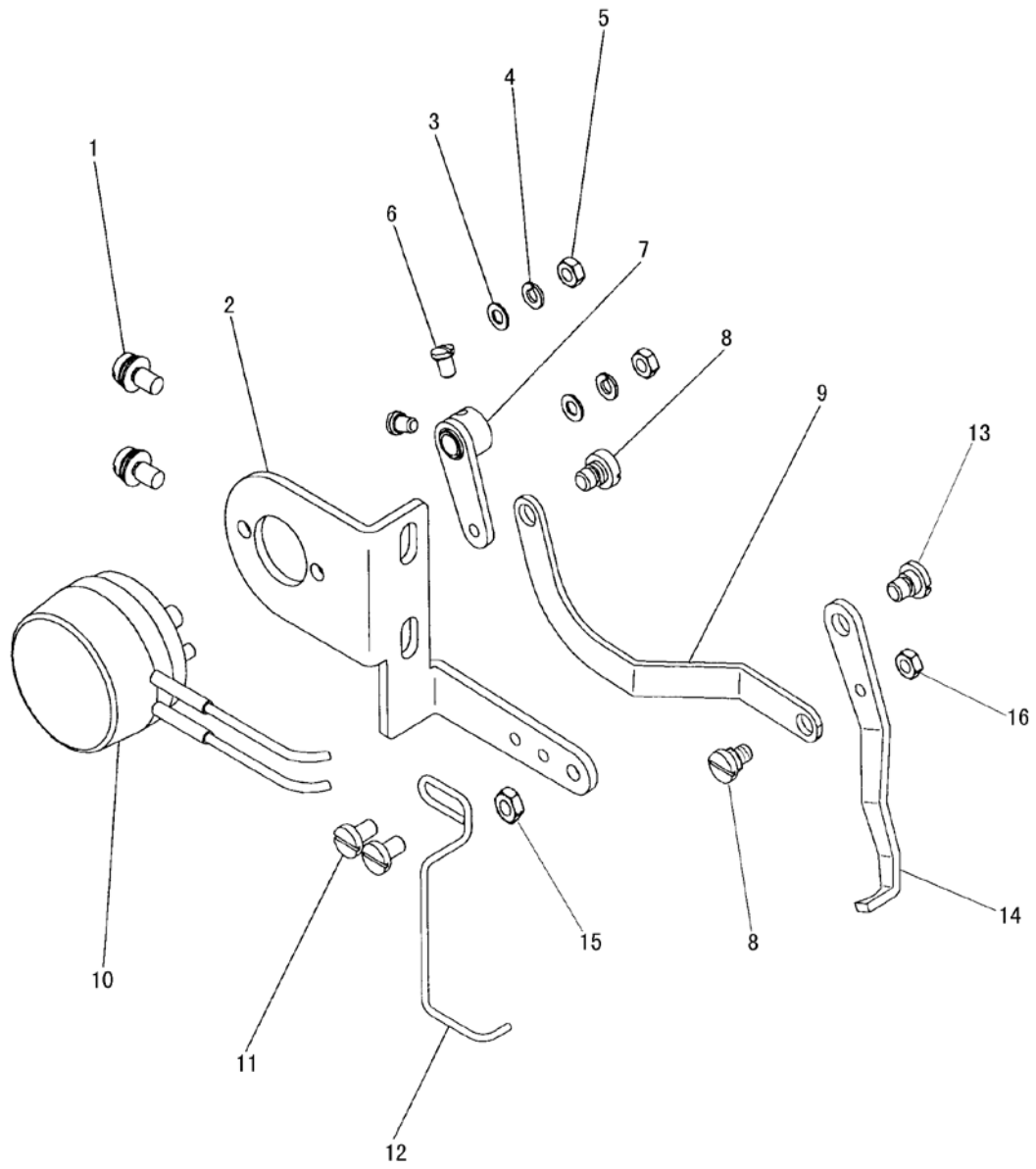
J.THREAD TRIMMING MECHANISM

Fig. No.	Part No.	Description	Pcs.	Remarks
J01	H6685F7101	Solenoid (thread release)	1	
J02	HA19039334	Screw M4×8	2	M4×8
J03	H6693F8001	Solenoid mounting plate	1	
J04	H6683D8001	Nut M4	2	M4
J05	H6683F8001	Pin	1	
J06	H6675F8001	Screw 3/32 (56) × 2.8	2	3/32 (56) × 2.8
J07	H6676F8001	Needle plate	1	
J08	H6677F8001	Spacer	1	
J09	H6686J8001	Film sheet	1	
J10	H6681F8001	Slide plate	1	
J11	H6623C8001	Screw M4×8	4	M4×8
J12	H6695F8001	Spacer	1	
J13	H6673F8001	Fixed knife	1	
J14	H6692B8001	Screw 9/64 (40) × 3.2	4	9/64 (40) × 3.2
J15	H6670F7101	Movable knife	1	
J16	H6679F8001	Wave washer 6	1	6
J17	H6678F8001	Screw 11/64 (40)	1	11/64 (40)
J18	HS90101006	Screw M5×6	1	M5×6
J19	H6664F8001	Stepped pin	1	
J20	H6666F8001	Screw 3/16 (28)	1	3/16 (28)
J21	H6658F8001	Knife driving crank (3)	1	
J22	H6680F8001	Leaf spring	1	
J23	H007013025	E-type retaining ring 2.5	1	E 2.5
J24	H6667F8001	Link	1	
J25	H6659F8001	Bolt 11/64 (40)	1	11/64 (40)
J26	H6660F7101	Connecting rod (horizontal)	1	
J27	H6611F8001	Crank	1	
J28	HS90321012	Bolt M5×12	3	M5×12
J29	H6613F8001	Spring washer 4	4	4
J30	H6685D8001	Washer 4	4	4
J31	HA19039335	Screw M4×10	3	M4×10
J32	H6609F8001	Solenoid bracket	1	
J33	H6615F7101	Solenoid (thread trim)	1	
J34	H003001060	Nut M6	1	M6
J35	HS90131135	Screw M6×35	1	M6×35
J36	H6622F8001	Shaft	1	
J37	H6623F8001	Spring	1	
J38	H6635F7101	Cam follower assy	1	
J39	H6642F8001	Nut 11/64 (40)	1	11/64 (40)
J40	HS90131005	Screw M5×5	4	M5×5
J41	H6644F8001	Bolt 11/64 (40)	3	11/64 (40)
J42	H6631F7101	Connecting rod (vertical)	1	
J43	H6646F8001	Hook	1	

J.THREAD TRIMMING MECHANISM

Fig. No.	Part No.	Description	Pcs.	Remarks
J44	H6645F8001	Spring	1	
J45	H6654F8001	Shaft	1	
J46	H6653F8001	Knife driving crank (2)	1	
J47	H6643F8001	Long nut 11/64 (40)	1	11/64 (40)
J48	H6651F8001	Knife driving crank (1)	1	
J49	H6686D8001	Washer 5	1	5
J50	H668EE8001	Spring washer 5	1	5
J51	HA100B2110	Screw 11/64 (40) ×5.5	1	11/64 (40) ×5.5
J52	H6641F8001	Nut	1	

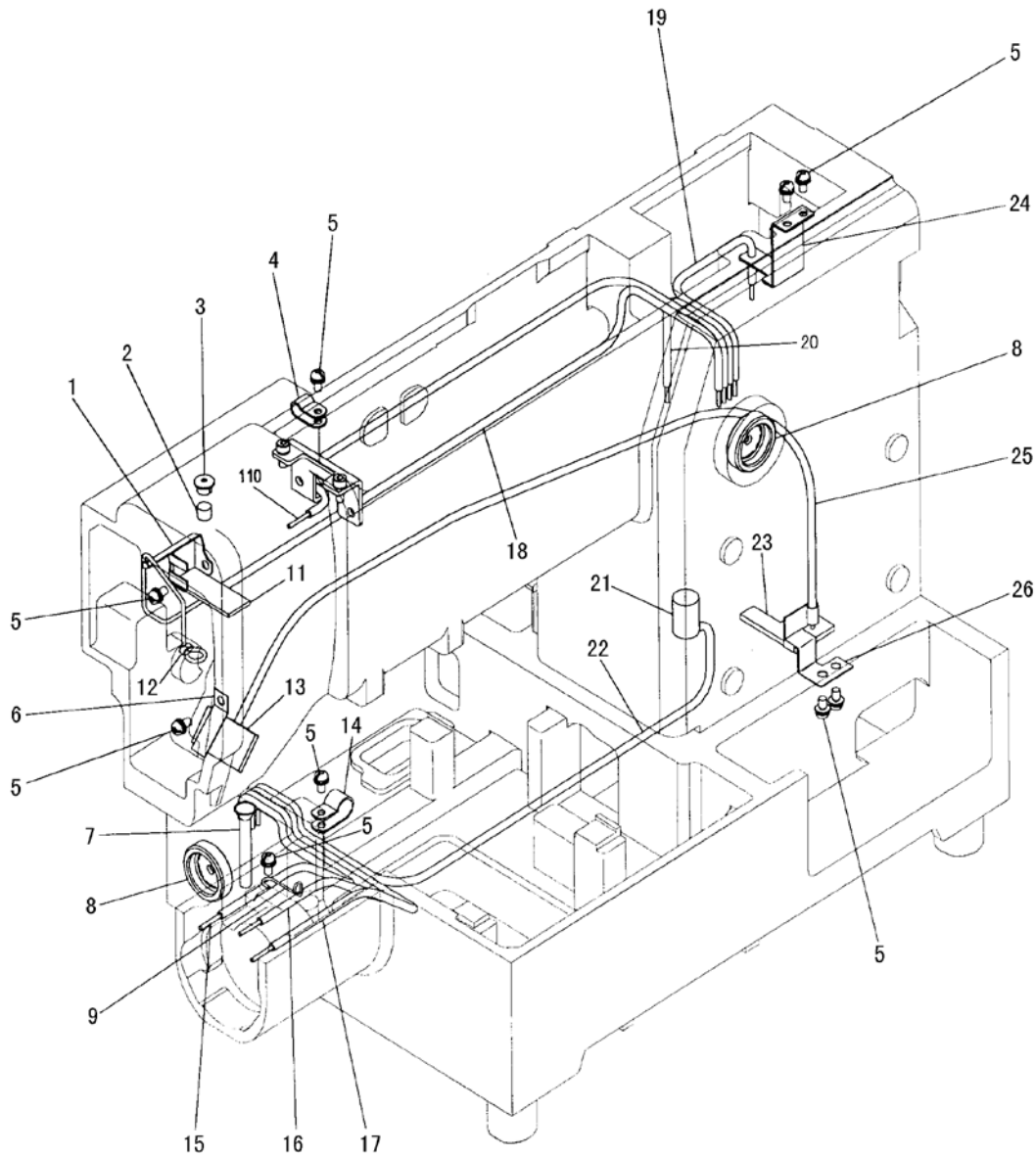
K.WIPER MECHANISM



K.WIPER MECHANISM

Fig. No.	Part No.	Description	Pcs.	Remarks
K01	H6623G8001	Screw M4×10	2	M4×10
K02	H6611G8001	Wiper adapter	1	
K03	H668CE8001	Washer 3	2	3
K04	H668BE8001	Spring washer 3	2	3
K05	HA19038702	Nut M3	2	M3
K06	H6643C8001	Screw 1/8 (44) ×4.5	2	1/8 (44) ×4.5
K07	H6609G8001	Wiper crank	1	
K08	H6607G8001	Screw 9/64 (40)	2	9/64 (40)
K09	H6608G8001	Link	1	
K10	H6613G7101	Solenoid (wiper)	1	
K11	H6622G8001	Screw 9/64 (40) ×6.5	2	9/64 (40) ×6.5
K12	H6621G8001	Finger protector	1	
K13	H6612G8001	Screw 11/64 (40)	1	11/64 (40)
K14	H6606G8001	Wiper	1	
K15	H6625G8001	Nut 9/64 (40)	1	9/64 (40)
K16	H6624G8001	Nut 11/64 (40)	1	11/64 (40)

M.OIL LUBRICATION MECHANISM

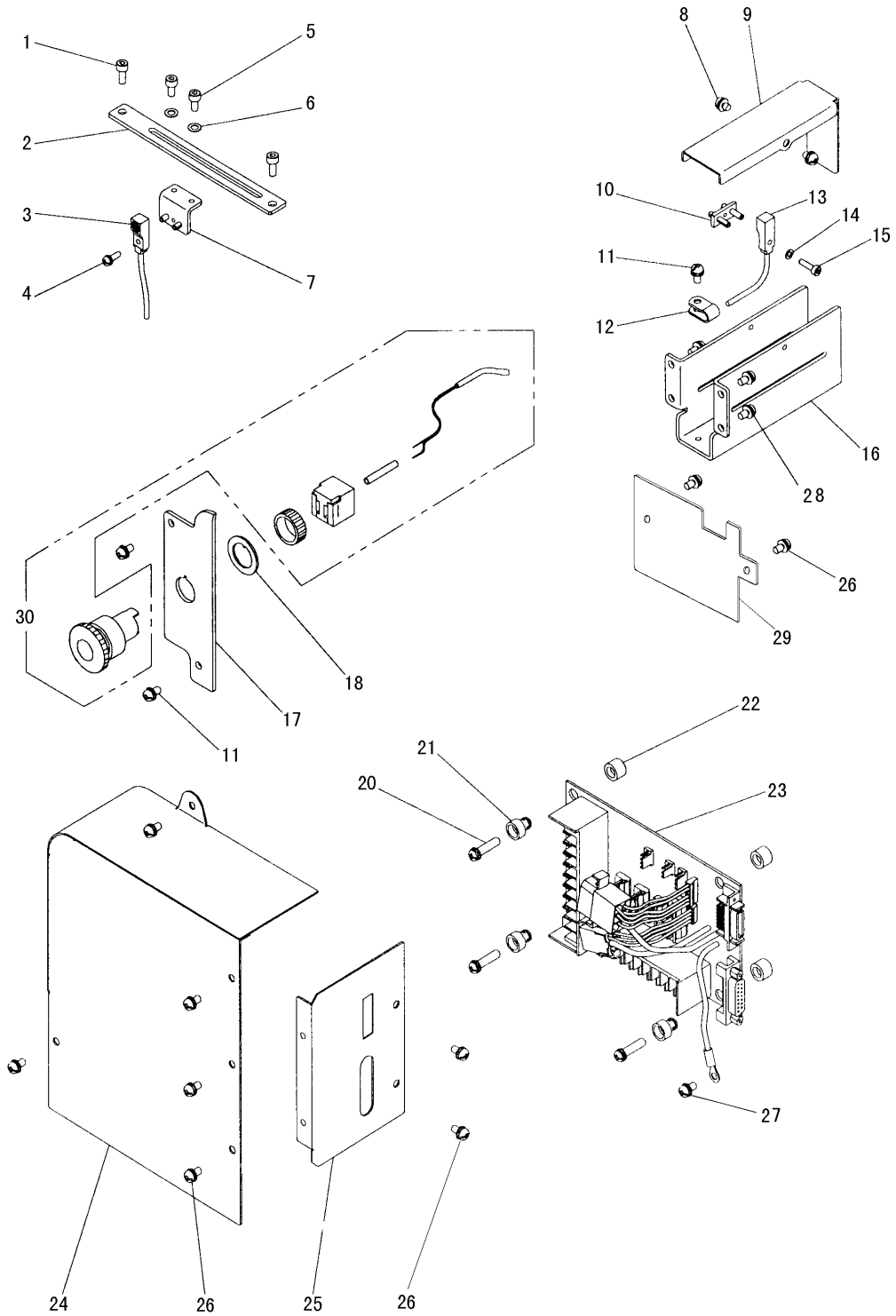


From the library of: Diamond Needle Corp

M.OIL LUBRICATION MECHANISM

Fig. No.	Part No.	Description	Pcs.	Remarks
M01	H6611H8001	Holder	1	
M02	H6646H8001	Felt	1	
M03	H2000M0090	Cap	1	
M04	H6679D8001	Nylon clip AB-3N	1	NAB-3N
M05	HA19039334	Screw M4×8	9	M4×8
M06	H6610H8001	Holder	1	
M07	H6613H8001	Pipe	1	
M08	H6614H8001	Oil gauge	2	
M09	H6612H8001	Holder	1	
M10	H6625H7101	Oil pipe assy	1	
M11	H6634H8001	Felt	1	
M12	H3200G2030	Holder	1	
M13	H6641H8001	Felt	1	
M14	H6646H8001	Nylon clip AB-5N	1	AB-5N
M15	H6619H7101	Oil pipe assy (hook left)	1	
M16	H6622H7101	Oil pipe assy (hook center)	1	
M17	H6616H7101	Oil pipe assy (hook right)	1	
M18	H6631H7101	Oil pipe assy (needl bar)	1	
M19	H6635H7101	Oil pipe assy (connecting rod)	1	
M20	H6628H7101	Oil pipe assy (hook shaft bushing C)	1	
M21	H6608H8001	Felt	1	
M22	H6642H7101	Oil pipe assy (drive shaft bushing R)	1	
M23	H6606H8001	Felt	1	
M24	H6609H8001	Holder	1	
M25	H6638H7101	Oil pipe assy (circulation)	1	
M26	H6605H8001	Holder	1	

N.ELECTRICAL PARTS

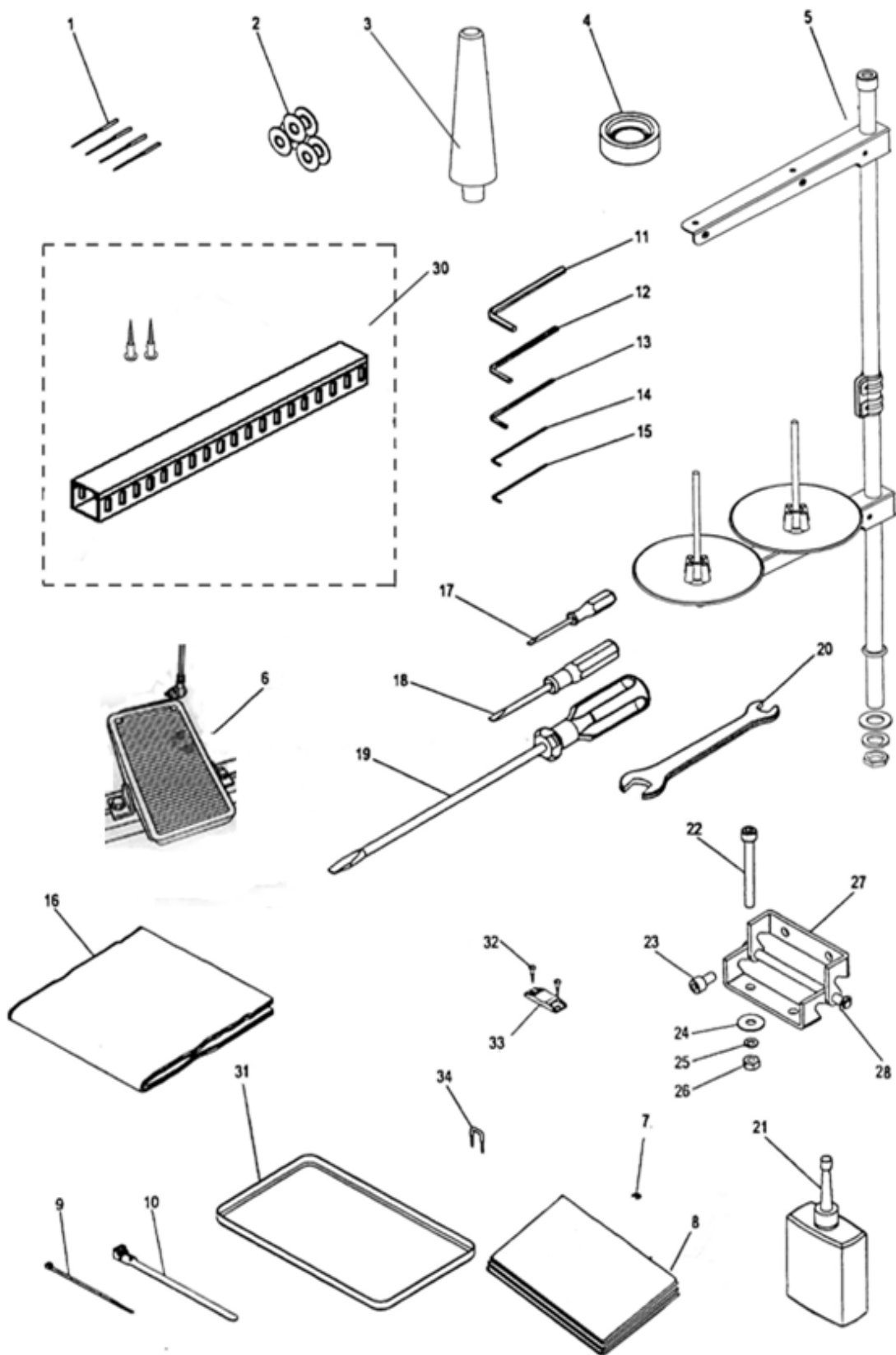


From the library of: Diamond Needle Corp

N.ELECTRICAL PARTS

Fig. No.	Part No.	Description	Pcs.	Remarks
N01	HS90321935	Bolt M4×10	2	M4×10
N02	H6656D8001	Detector X mounting plate	1	
N03	H6658D8001	Detector X	1	
N04	HA19039320	Screw M3×10	1	M3×10
N05	HS90321934	Bolt M4×10	2	M4×10
N06	H6684D8001	Washer 4	2	4
N07	H6651D7101	Holder plate assy X	1	
N08	HA19039333	Screw M4×6	2	M4×6
N09	H6675D7101	Detector cover Y	1	
N10	H6676D7101	Holder plate assy	1	
N11	HA19039334	Screw M4×8	3	M4×8
N12	H6679D8001	Nylon clip AB-3N	1	AB-3N
N13	H6670D8001	Detector Y	1	
N14	H668CE8001	Washer 3	1	3
N15	HS90131906	Bolt M3×12	1	M3×12
N16	H6665D8001	Detector bracket Y	1	
N17	H6634I8001	Face cover B	1	
N18	H6642I8001	Lock ring	1	
N20	HA19039340	Screw M4×20	4	M4×20
N21	H6607I8001	Nylon bush	4	
N22	H6608I8001	Nylon bush	4	
N23	H6606I8001	Print circuit board	1	
N24	H6611I8001	Circuit board cover	1	
N25	H6613I7102	Connector panel	1	
N26	HA19039334	Screw M4×8	9	M4×8
N27	HS90201408	Screw M4×8	1	M4×8
N28	HS90329935	Screw M4×10	4	M4×10
N29	H6674D8001	Cover board	1	
N30	H6635I7101	Switch assy	1	

P.ACCESSORIES



P.ACCESSORIES

Fig. No.	Part No.	Description	Pcs.	Remarks
P01	HM010C8001	Needle DP × 17#18	4	DXP × 17#18
P02	H6685C8001	Bobbin	3	
P03	H6620J8001	Head rest	1	
P04	H6658B8001	Rubber cushion	4	
P05	HA300J2370	Cotton stand assy	1	
P06	HE127I7101	Foot switch	1	
P07	H007013025	E-type retaining ring 2.5	5	
P08	HA704S0654	Owner's manual	1	
P09	H6632J8001	Cord tie	1	
P10	H6622J8001	Cord tie	2	
P11	H6611J8001	Hexagonal wrench 4	1	M4
P12	H3200L0060	Hexagonal wrench 3	1	M3
P13	H3200L0050	Hexagonal wrench 2.5	1	M2.5
P14	H6612J8001	Hexagonal wrench 1.5	1	M1.5
P15	H3200L0070	Hexagonal wrench 1/16"	1	M1/16"
P16	H6619J8001	Polyethylene cover	1	
P17	HA300J2210	Screw drive (small)	1	
P18	HA300J2200	Screw drive (middle)	1	
P19	HA300J2070	Screw drive (large)	1	
P20	HA300J2220	Spanner 10-14	1	M10-14
P21	H200400069	Oiler with oil	1	
P22	H415060550	Bolt M6 × 55	4	M6 × 55
P23	H415060120	Bolt M6 × 12	4	M6 × 12
P24	H6642J8001	Washer 6.5-18	4	6.5-18
P25	H005008060	Spring washer 6	4	M6
P26	H003001060	Nut M6	4	M6
P27	H6639J8001	Hinge	2	
P28	H007013050	E-type retaining ring 5	2	
P30	HF15410026	Pneumatic assy	1	
P31	H6621J8001	Oil pan	1	
P32	H6628J8001	Wooden screw 3.1 × 16	4	M3.1 × 16
P33	H6627J8001	Tie holder	2	
P34	H6618J8001	Staple	4	

SHANGHAI HUIGONG NO.3 SEWING MACHINE FACTORY

ADD: 1418, Yishan Road, Shanghai, China

Zip Code: 201103

Overseas Business: TEL: 86-21-64853303 FAX: 86-21-64854304

E-mail: highlead@online.sh.cn <http://www.highlead.com.cn>

The description covered in this manual is subject to change for improvement of the commodity without notice

2010.07. Printed