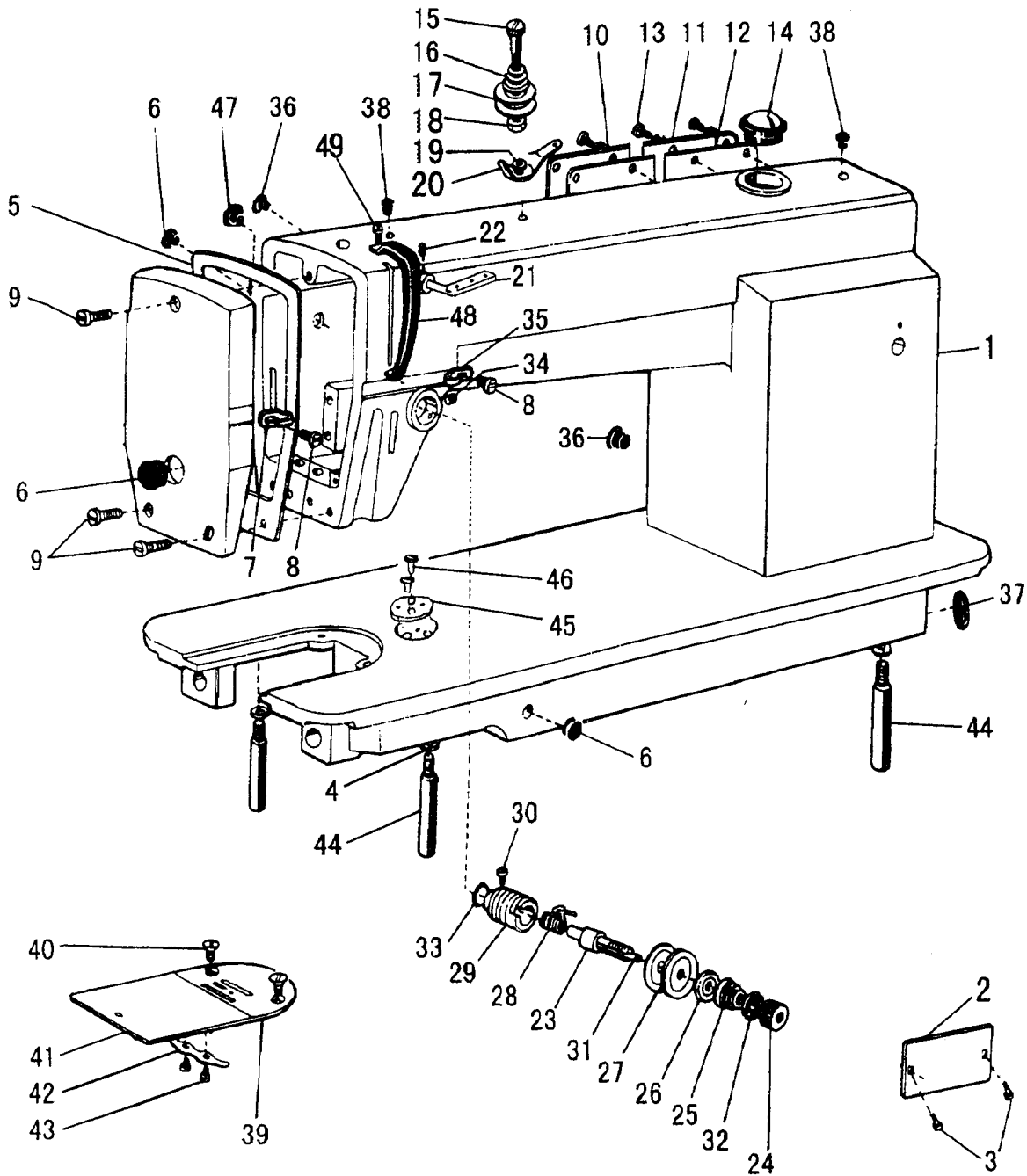


A.ARM BED AND ITS ACCESSORIES



From the library of: Diamond Needle Corp

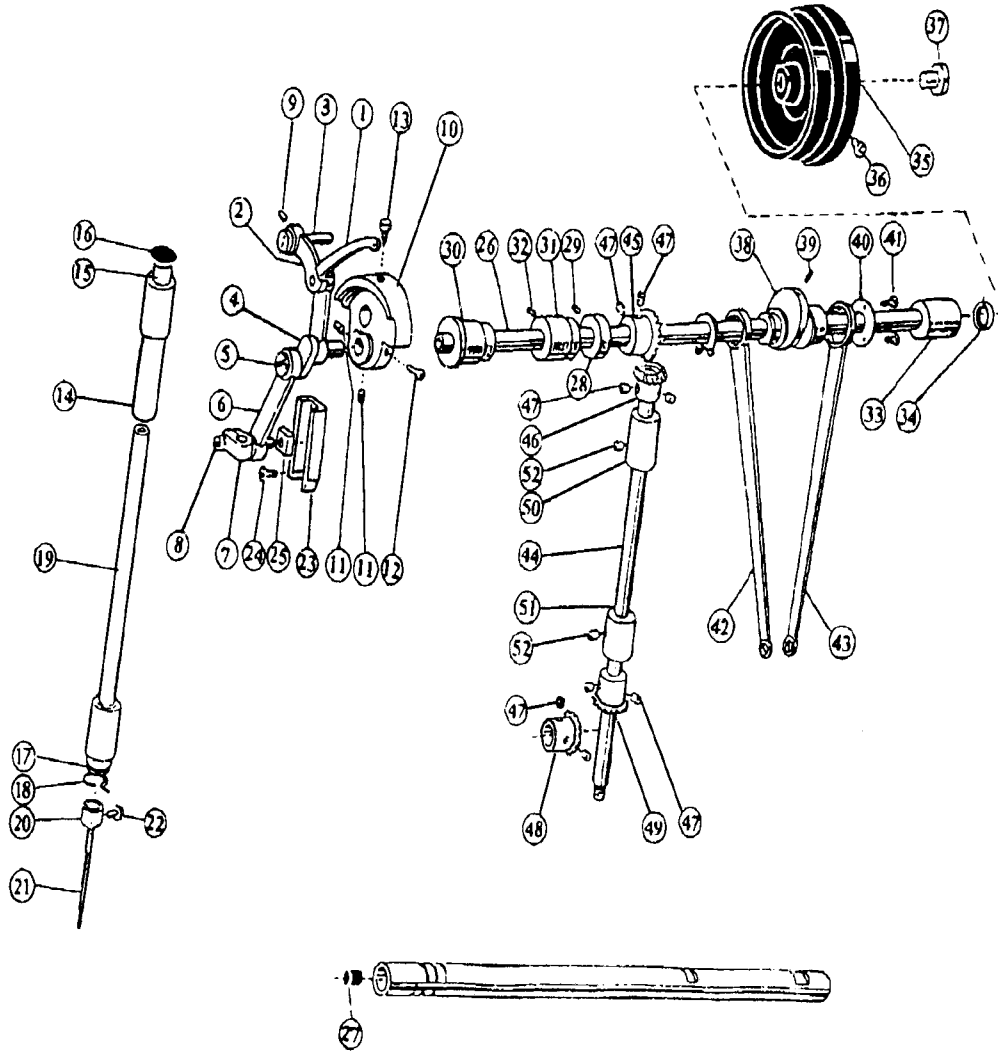
A.ARM BED AND ITS ACCESSORIES

| Fig. No. | Part No. | Description | Pcs. | Remarks |
|----------|------------|-----------------------------------|------|-----------------|
| A01 | HB1253B081 | Arm | 1 | |
| A02 | HB1258B081 | Trade mark plate | 1 | |
| A03 | H924025050 | rivet | 4 | Φ2.5×5 |
| A04 | H005008060 | Spring washer | 2 | GB/T93 6 |
| A05 | H2100B2050 | Face plate | 1 | |
| A06 | HA307B0674 | Rubber plug (Φ11.8) | 1 | |
| A07 | HA607B0671 | Thread guide on face plate | 1 | |
| A08 | HA106B0676 | Thread guide screw | 1 | SM9/64(40)×6 |
| A09 | HA700B2030 | Face plate screw | 3 | SM11/64(40)×10 |
| A10 | H2100B2070 | Arm sidecover(left) | 1 | |
| A11 | H2100B2080 | Arm sidecover(right) | 1 | |
| A12 | HB1259B081 | Gasket for arm side cover | 1 | Outsourcing |
| A13 | HA300B2170 | Screw group | 8 | SM11/64(40)×9 |
| A14 | H1210B0671 | Check window | 1 | |
| A15 | HA112B0691 | Screw type tension stud | 1 | |
| A16 | HA112B0692 | Spring for pre-tension | 1 | |
| A17 | HA112B0693 | Disc for pre-tension | 2 | |
| A18 | HA112B0694 | Spacer for pre-tension | 1 | |
| A19 | HA112B0695 | Pre-tension thread guide | 1 | |
| A20 | H007013030 | Stop ring | 1 | GB/T896 3 |
| A21 | HA100B2100 | Three-hple thread guide | 1 | |
| A22 | HA100B2110 | Set screw | 1 | SM11/64(40)×5.5 |
| A23 | HA115B0701 | Thread tension stud | 1 | |
| A24 | HA310B0701 | Oil thumb nut | 1 | |
| A25 | HA505B0671 | Thread tension spring | 1 | |
| A26 | HA310B0702 | Thread tension releasing disc | 1 | |
| A27 | HA310B0705 | Thread tension disc | 2 | |
| A28 | HA505B0672 | Thread take-up spring | 1 | |
| A29 | HA310B0703 | Thread tension regulating bushing | 1 | |
| A30 | HA115B0708 | Set screw | 1 | SM9/64(40)×6 |
| A31 | HA115B0709 | Thread tension releasing pin | 1 | |
| A32 | HA115B7010 | Stop disc | 1 | |
| A33 | HA115B7011 | Rubber ring | 1 | |
| A34 | HA300B2080 | Set screw | 1 | SM15/64(28)×6.8 |
| A35 | HA600B2050 | Thread guide at arm center | 1 | |
| A36 | HA300B2090 | Rubber plug (Φ8.8) | 2 | |
| A37 | HA300B2100 | Rubber plug (Φ27) | 1 | |
| A38 | HA300B2110 | Red rubber plug (Φ5.7) | 2 | |
| A39 | H2100B2120 | Needle plate | 1 | |
| A40 | HA300B2190 | Needle plate screw | 2 | SM11/64(40)×4.5 |
| A41 | HA124B0711 | Slide plate | 1 | |
| A42 | HA124B0712 | Slide plate spring | 1 | |
| A43 | HA124B0713 | Screw | 2 | SM3/32(56)×2.2 |

A.ARM BED AND ITS ACCESSORIES

| Fig. No. | Part No. | Description | Pcs. | Remarks |
|----------|------------|----------------------|------|---------------|
| A44 | HA100B2220 | Leg | 3 | |
| A45 | HA300B2140 | Plate for guide | 1 | |
| A46 | HA300B2130 | Screw | 2 | SM11/64(40)×5 |
| A47 | HA307B0673 | Rubber plug | 1 | 19 |
| A48 | HA600C2020 | Thread take-up cover | 1 | |
| A49 | HA300C2030 | Screw | 1 | SM11/64(40)×8 |

B. SEWING MECHANISM



From the library of: Diamond Needle Corp

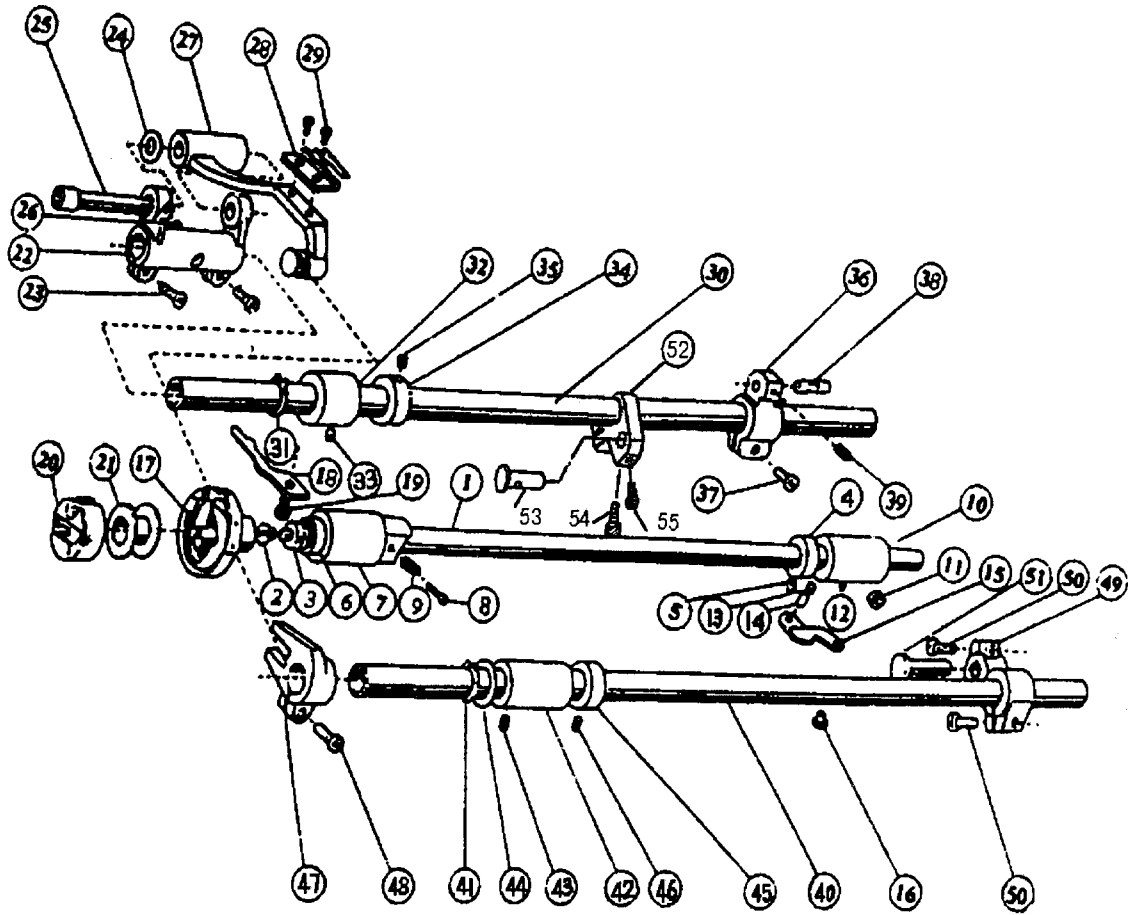
B.SEWING MECHANISM

| Fig. No. | Part No. | Description | Pcs. | Remarks |
|----------|------------|-------------------------------------|------|----------------|
| B01 | H11111C104 | Thread take-up lever | 1 | |
| B02 | H11112C104 | Thread take-up lever link | 1 | |
| B03 | HA104C0653 | Hinge pin | 1 | |
| B04 | HA504C0651 | Thread take-up crank | 1 | |
| B05 | HA104C0656 | Set screw (left-handed) | 1 | |
| B06 | HA304C0653 | Needle bar link | 1 | |
| B07 | HA104C0658 | Needle bar adaptor | 1 | |
| B08 | HA106B0676 | Screw | 1 | SM9/64(40)×6 |
| B09 | HA100C2020 | Set screw | 1 | SM15/64(28)×10 |
| B10 | HA307C0661 | Needle bar crank | 1 | |
| B11 | HA307C0662 | Set screw | 2 | SM1/4(40)×6 |
| B12 | HA100C2060 | Set screw | 1 | SM9/32(28)×13 |
| B13 | HA100C2070 | Set screw | 1 | SM9/32(28)×14 |
| B14 | HA100C2080 | Needle bar bushing (upper) | 1 | |
| B15 | HA100C2100 | Felt plug | 1 | |
| B16 | HA300B2090 | Red rubber plug (φ8.8) | 2 | |
| B17 | HA804B0652 | Needle bar bushing (lower) | 1 | |
| B18 | HA500C2060 | Thread guide for needle bar bushing | 1 | |
| B19 | H2100C2010 | Needle bar | 1 | |
| B20 | HA500C2030 | Thread guide for needle bar | 1 | |
| B21 | H2000G2030 | Needle | 1 | DP×17 #22 |
| B22 | HA100C2170 | Screw | 1 | SM1/8(44)×4.5 |
| B23 | HA100C2180 | Guide for slide block | 1 | |
| B24 | HA100C2190 | Set screw | 2 | SM11/64(40)×8 |
| B25 | HA100C2200 | Slide block | 1 | |
| B26 | HA304D0651 | Arm shaft | 1 | |
| B27 | HA104D0652 | Rubber plug (Φ7.4×10) | 2 | |
| B28 | HA108G0661 | Collar for | 1 | |
| B29 | HA105D0662 | Set screw | 2 | SM1/4(40)×4 |
| B30 | HA100D2030 | Arm shaft bushing(left) | 1 | |
| B31 | HA100D2040 | Arm shaft bushing(middle) | 1 | |
| B32 | HA100C2020 | Set screw | 1 | SM15/64(28)×10 |
| B33 | HA300D2020 | Arm shaft bushing(right) | 1 | |
| B34 | HA306D0066 | Oil seal | 1 | |
| B35 | H2000C2040 | Balance wheel | 1 | |
| B36 | HA110D0672 | Set screw | 2 | |
| B37 | HA100D2080 | Screw | 1 | SM11/32(28)×10 |
| B38 | H6510D8001 | Feed and feed lifting eccentric | 1 | |
| B39 | HA100C2020 | Set screw | 2 | |
| B40 | H6511D8001 | Feed cam cover | 1 | |
| B41 | HA7311C306 | Set screw | 3 | |
| B42 | HA112D3013 | Crank rock | 1 | |
| B43 | HA7311C506 | Feed rock | 1 | |

B.SEWING MECHANISM

| Fig. No. | Part No. | Description | Pcs. | Remarks |
|----------|------------|--------------------------------|------|----------------|
| B44 | H2100D2010 | Vertical shaft | 1 | |
| B45 | HA113D2112 | Upper shaft gear | 1 | Z=27 |
| B46 | HA113D2122 | Vertical shaft gear (upper) | 1 | Z=18 |
| B47 | HA108C0663 | Screw | 8 | SM1/4(40)×7 |
| B48 | HA113D2212 | Lower shaft gear | 1 | Z=21 |
| B49 | HA113D2222 | Vertical shaft gear (upper) | 1 | Z=28 |
| B50 | HA100D2110 | Vertical shaft bushing (upper) | 1 | |
| B51 | HA600D2010 | Vertical shaft bushing (lower) | 1 | |
| B52 | HA100C2020 | Screw | 2 | SM15/64(28)×10 |

C.FEEDING AND FEED LIFTING & LOWER SHAFT MECHANISM



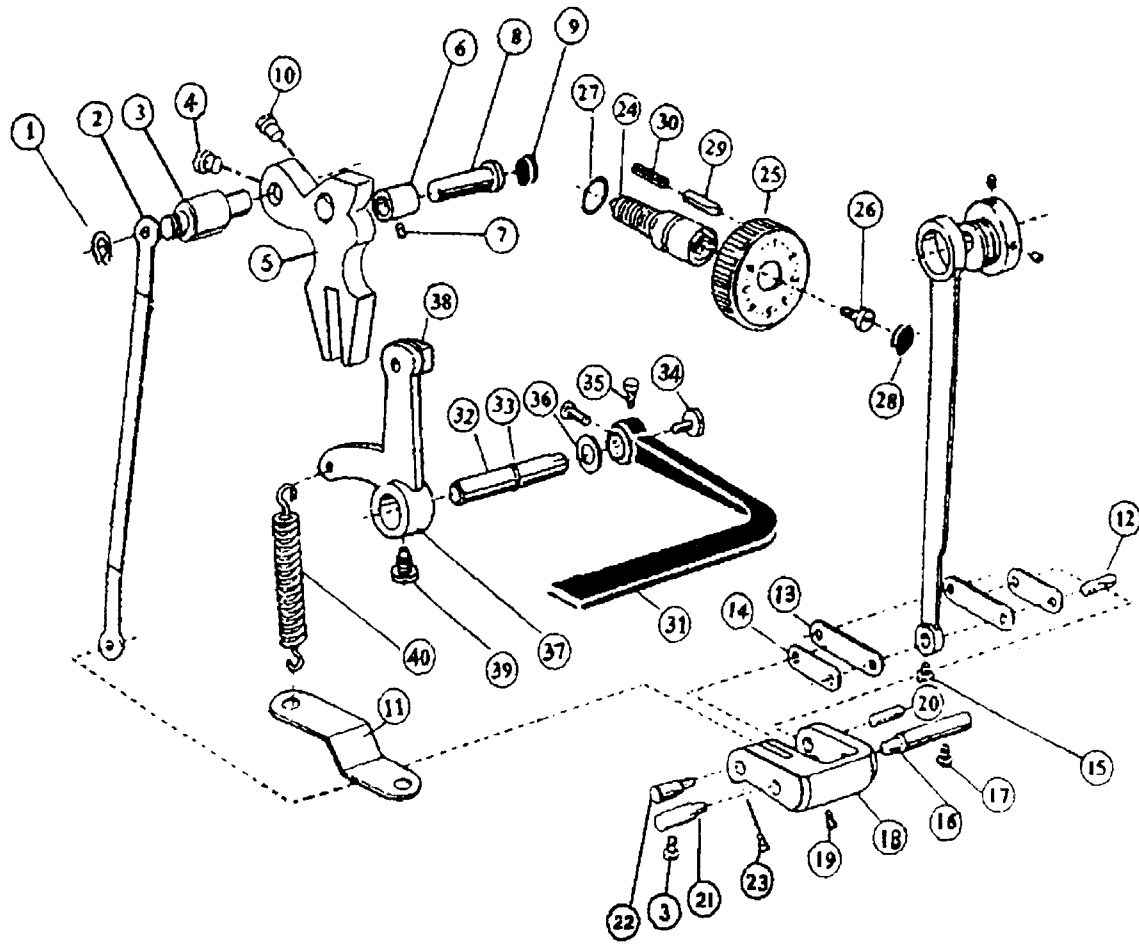
C.FEEDING AND FEED LIFTING & LOWER SHAFT MECHANISM

| Fig. No. | Part No. | Description | Pcs. | Remarks |
|----------|------------|---------------------------------|------|-----------------|
| C01 | HA604E0651 | Hook shaft | 1 | |
| C02 | HA1111E104 | Screw | 1 | |
| C03 | HA1111E204 | Oil felt for hook shaft | 1 | |
| C04 | HA305E0661 | Collar for hook shaft | 1 | 通GC6-1 |
| C05 | HA305E0662 | Screw | 2 | SM15/64(28)×4.5 |
| C06 | HA106E0071 | Oil seal | 1 | |
| C07 | HA100E2040 | Bushing for hook shaft (left) | 1 | |
| C08 | HA100E2050 | Screw | 1 | |
| C09 | HA100E2060 | Coil spring | 1 | |
| C10 | HA311E0671 | Bushing for hook shaft (right) | 1 | |
| C11 | HA100C2020 | Screw | 1 | SM15/64(28)×10 |
| C12 | HA110E0672 | Oil pipe for hook shaft bushing | 1 | |
| C13 | HA300E2100 | Plunger | 1 | |
| C14 | HA300E2110 | Coil spring | 1 | |
| C15 | HA600E2020 | Guide plate | 1 | |
| C16 | HA104F0654 | Screw | 1 | SM15/64(28)×10 |
| C17 | H1105E0066 | Rotating hook | 1 | |
| C18 | H2100E2010 | Hook positioner | 1 | |
| C19 | HA100E2150 | Screw | 1 | SM11/64(40)×10 |
| C20 | HA608E0067 | Bobbin case | 1 | |
| C21 | H1100E2010 | Bobbin | 1 | |
| C22 | HA104G0011 | Feed lifting rock shaft fork | 1 | |
| C23 | HA104G0012 | Screw | 2 | |
| C24 | HA104G0656 | Washer | 1 | |
| C25 | H1100G2040 | Shaft for feed bar | 1 | |
| C26 | HA100C2190 | Screw | 1 | SM11/64(40)×8 |
| C27 | H6506G8001 | Feed bar assay | 1 | |
| C28 | HA104G0653 | Feed gog | 1 | |
| C29 | HA104G0654 | Screw | 2 | |
| C30 | H2100G2010 | Feed rock shaft | 1 | |
| C31 | H007009150 | C-type retaining ring | 1 | GB/T894.1 15 |
| C32 | H2100G2060 | Bushing for feed rock shaft | 1 | |
| C33 | HA305E0662 | Screw | 1 | |
| C34 | HA108G0661 | Collar for feed rock shaft | 1 | |
| C35 | HA105D0662 | Screw | 2 | SM1/4(40)×4 |
| C36 | HA8211C205 | Feed rock shaft crank (right) | 1 | |
| C37 | HA7311C606 | Screw (right) | 1 | SM11/64(40)×15 |
| C38 | HA706C11B2 | Pin | 1 | |
| C39 | HA7311C806 | Screw | 1 | SM11/64(40)×7 |
| C40 | HA200G2020 | Feed lifting rock shaft | 1 | |
| C41 | H007009150 | C-type retaining ring | 1 | GB/T894.1 15 |
| C42 | HA100G2120 | Bushing for feed lifting shaft | 1 | |
| C43 | HA100C2020 | Screw | 1 | SM15/64(28)×10 |

C.FEEDING AND FEED LIFTING & LOWER SHAFT MECHANISM

| Fig. No. | Part No. | Description | Pcs. | Remarks |
|----------|------------|---------------------------------------|------|----------------|
| C44 | HA100G2130 | Washer | 1 | |
| C45 | HA108G0661 | Collar for feed lifting rock shaft | 1 | |
| C46 | HA105D0662 | Screw | 2 | SM1/4(40)×4 |
| C47 | H1204D0651 | Feed lifting rock shaft crank | 1 | |
| C48 | HA111G0683 | Screw | 1 | SM11/64(40)×12 |
| C49 | HA306G0671 | Feed lifting rock shaft crank (right) | 1 | |
| C50 | HA104G0012 | Screw | 2 | SM3/16(28)×12 |
| C51 | HA100G2070 | Pin | 1 | |
| C52 | H6504G8001 | Feed rock shaft | 1 | |
| C53 | H6505G8001 | Pin | 1 | |
| C54 | HA104G0012 | Screw | 1 | SM3/16(28)×12 |
| C55 | HA104F0684 | Screw | 1 | SM15/64(28)×10 |

D.STITCH REGULATOR MECHANISM

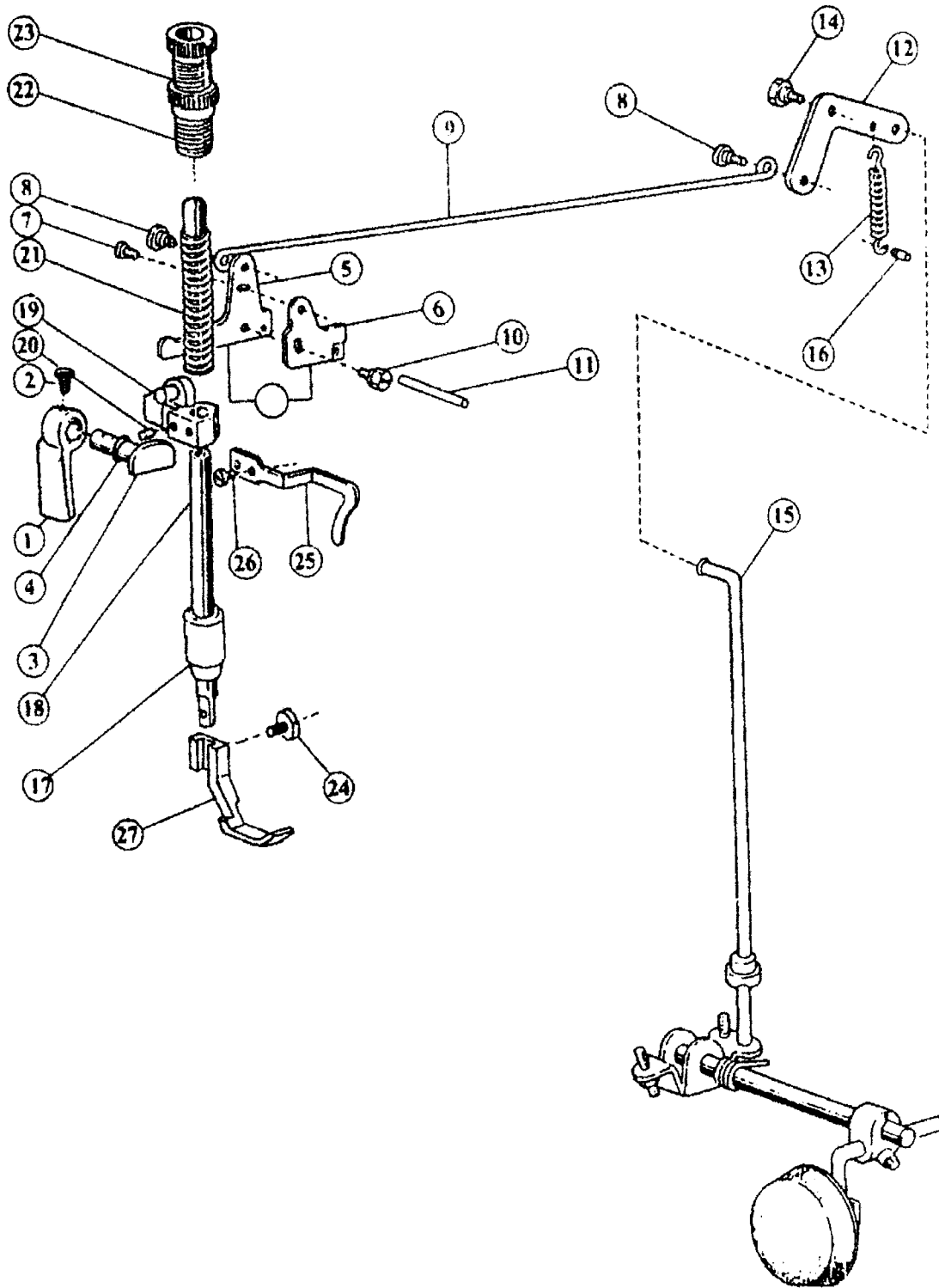


From the library of: Diamond Needle Corp

D.STITCH REGULATOR MECHANISM

| Fig. No. | Part No. | Description | Pcs. | Remarks |
|----------|------------|-------------------------------------|------|----------------|
| D01 | H007013050 | E-type ring | 1 | GB/T896 5 |
| D02 | HA7311C406 | Connecting rod stud | 1 | |
| D03 | H1204E0652 | Stitch length adjusting swing shaft | 1 | |
| D04 | HA100C2190 | Screw | 1 | SM11/64(40)×8 |
| D05 | H1204E0651 | Feed regulator | 1 | |
| D06 | HA704B0655 | Bushing for feed regulator | 1 | |
| D07 | HA100C2020 | Screw | 1 | SM15/64(28)×10 |
| D08 | HA100F2040 | Pin | 1 | |
| D09 | HA700B2120 | Rnbber plug | 1 | |
| D10 | HA104F0654 | Screw | 1 | SM15/64(28)×10 |
| D11 | HA100F2140 | Spring holder | 1 | |
| D12 | HA706C11B1 | Link stud | 1 | |
| D13 | HA8211C305 | Link (long) | 2 | |
| D14 | HA706C1191 | link (short) | 2 | |
| D15 | HA7311C806 | Screw | 1 | |
| D16 | HA700C2040 | Feed regulator shaft (right) | 1 | |
| D17 | HA111G0683 | Screw | 1 | |
| D18 | HA7311CG06 | Stitch length adjusting crank | 1 | |
| D19 | HA7311CD06 | Screw | 1 | SM9/64(40)×8.5 |
| D20 | HA7311CE06 | Link stud | 1 | |
| D21 | HA700C2050 | Feed regulator shaft (left) | 1 | |
| D22 | HA7311CF06 | Link stud | 1 | |
| D23 | HA7311CC06 | Screw | 1 | |
| D24 | HA506F0671 | Screw bar | 1 | |
| D25 | H1104F0651 | Dial | 1 | |
| D26 | HA109F0673 | Screw | 1 | SM3/16(28)×8 |
| D27 | HA109F0674 | O-ring | 2 | 14×2.4 |
| D28 | HA300F2050 | Rubber piug | 1 | |
| D29 | HA100F2080 | Stopper pin | 1 | |
| D30 | HA100F2090 | Spring for stopper pin | 1 | |
| D31 | HA309F0671 | Feed reversing lever | 1 | |
| D32 | HA113F3021 | Feed reversing lever shaft | 1 | |
| D33 | HA113F3022 | O-ring | 1 | 9×1.9 |
| D34 | HA113F0683 | Screw | 1 | SM3/16(28)×6.5 |
| D35 | HA104F0654 | Screw | 2 | SM15/64(28)×10 |
| D36 | HA100F2110 | Spring washer | 1 | |
| D37 | HA115F0691 | Crank | 1 | |
| D38 | HA115F4011 | Slide block pin | 1 | |
| D39 | HA100F2130 | Screw | 1 | SM15/64(28)×14 |
| D40 | HA115F0692 | Spring | 1 | |

E.PRESSER FOOT MECHANISM

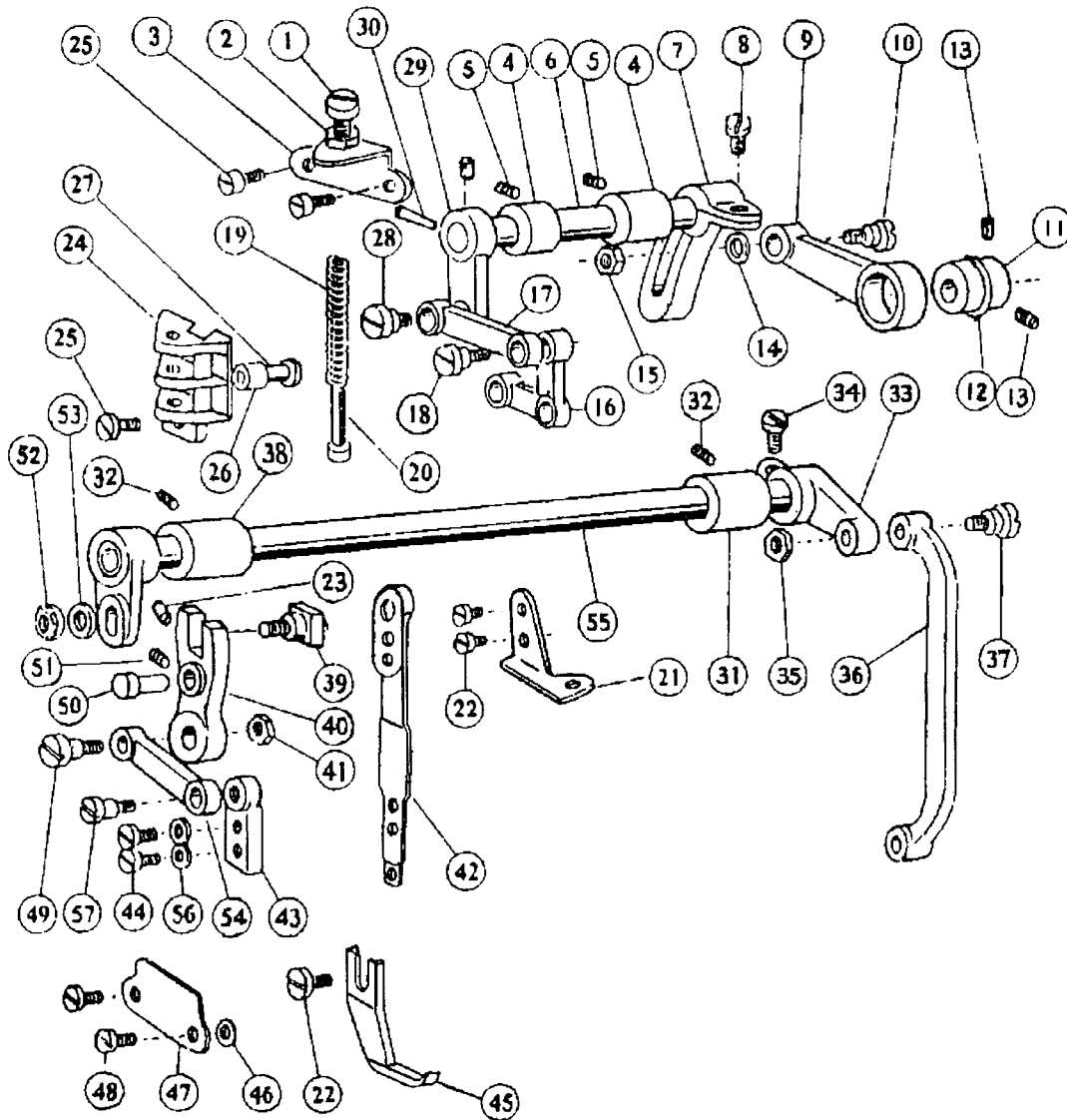


From the library of: Diamond Needle Corp

E.PRESSER FOOT MECHANISM

| Fig. No. | Part No. | Description | Pcs. | Remarks |
|----------|------------|--------------------------------------|------|----------------|
| E01 | H2104H0651 | Presser bar lifter | 1 | |
| E02 | HA100B2110 | Set screw | 1 | SM11/64(40)×5 |
| E03 | H2104H0661 | Presser bar lifting cam | 1 | |
| E04 | HA300H2080 | Oil seal for presser bar lifting cam | 1 | 8×1.9 |
| E05 | HA107H1011 | Knee lifter lever (left) | 1 | |
| E06 | HA305H6611 | Tension releasing cam | 1 | |
| E07 | HA107H1013 | Screw | 1 | SM11/64(40)×6 |
| E08 | HA107H0662 | Hinged screw | 2 | SM3/16(28)×3.5 |
| E09 | HA107H0663 | Knee lifter rod | 1 | |
| E10 | HA100H2050 | Bolt | 1 | SM15/64(28)×13 |
| E11 | HA100H2060 | Tension releasing pin | 1 | |
| E12 | HA110H0671 | Knee lifter lever (right) | 1 | |
| E13 | HA110H0672 | Spring | 1 | |
| E14 | HA100H2050 | Bolt for knee lifter lever | 1 | SM15/64(28)×10 |
| E15 | HA306H0671 | Knee lifter connecting rod | 1 | |
| E16 | HA100H2080 | Pin for spring | 1 | |
| E17 | HA300H2090 | Presser bar bushing | 1 | |
| E18 | H2000I2010 | Presser bar | 1 | |
| E19 | H2305H0671 | Presser bar lifting bracket | 1 | |
| E20 | HA3411D308 | Set screw | 1 | SM15/64(28)×7 |
| E21 | H1100H2020 | Presser spring | 1 | |
| E22 | H2005I0065 | Pressure regulating thumb screw | 1 | |
| E23 | HA117H0692 | Lock nut | 1 | |
| E24 | HA100H2150 | Set screw | 1 | SM9/64(40)×11 |
| E25 | HA300H2120 | Upper thread guide | 1 | |
| E26 | HA100C2040 | Screw | 1 | SM11/64(40)×5 |
| E27 | H2000I2040 | Presser foot complete | 1 | |

F. UPPER FEED LIFTING ROCK SHAFT MECHANISM



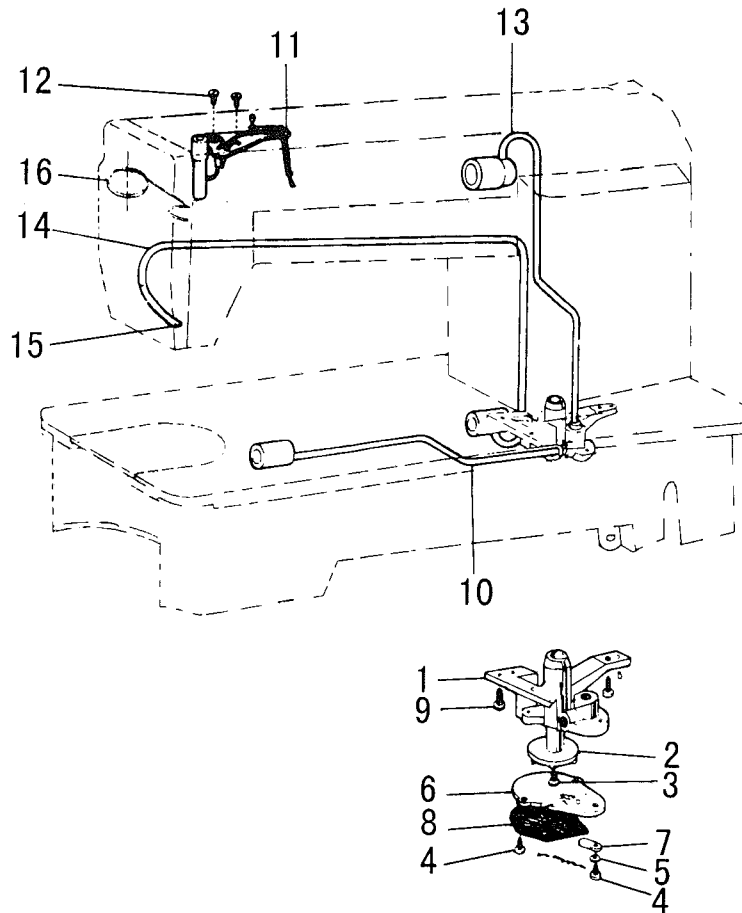
F.UPPER FEED LIFTING ROCK SHAFT MECHANISM

| Fig. No. | Part No. | Description | Pcs. | Remarks |
|----------|-------------|--|------|------------------|
| F01 | H2010J0065 | Lifting presser adjusting screw | 1 | |
| F02 | H2010J0066 | Lifting presser adjusting nut | 1 | |
| F03 | H2100I2080 | Lifting presser bracket for spring | 1 | |
| F04 | H2009B0068 | Presser lifting shaft bushing | 2 | |
| F05 | HA100B2110 | Screw | 2 | |
| F06 | H2011J0066 | Shaft | 1 | 4×20 |
| F07 | H2100I2010 | Presser lifting shaft | 1 | |
| F08 | H2012N0652 | Set screw | 1 | |
| F09 | H2104I0065 | Eccentric wheel rod | 1 | |
| F10 | H2000J2100 | Set screw | 1 | |
| F11 | H2014J0652 | Eccentric wheel | 1 | |
| F12 | H007009250 | C-type stop ring | 1 | GB/T894.1 25 |
| F13 | HA307C0662 | Screw | 2 | |
| F14 | H2013J0065 | Washer | 1 | |
| F15 | H0030020608 | Nut | 1 | GB/T6170 M6×0.75 |
| F16 | H2100I2020 | Presser feed crank | 1 | |
| F17 | H2004J0652 | Presser feed crank link | 1 | |
| F18 | H2004J0653 | Screw | 1 | |
| F19 | H2000I2190 | Lifting presser spring | 1 | |
| F20 | H2007J0066 | Presser spring guide | 1 | |
| F21 | H2100I2090 | Lifting presser guide plate | 1 | |
| F22 | HA100H2150 | Screw | 1 | |
| F23 | H609025180 | Pin | 1 | GB/T879.1 2.5×18 |
| F24 | H2000J2020 | Lifting presser plate | 1 | |
| F25 | H2000I2050 | Screw | 2 | |
| F26 | H2000J2030 | Lifting presser spring guide pin | 1 | |
| F27 | H2004J0655 | Feed crank guide shaft | 1 | |
| F28 | H2004J0662 | Screw | 1 | |
| F29 | H2011J0065 | Presser lifting crank | 1 | |
| F30 | H602040200 | Pin | 1 | GB/T117 4×20 |
| F31 | H2100I2060 | Presser swing shaft bushing (right) | 1 | |
| F32 | HA100B2110 | Screw | 2 | |
| F33 | HB1252I081 | Presser swing crank(right) | 1 | Outsourcing |
| F34 | H2012N0652 | Screw | 1 | |
| F35 | H2010J0066 | Lifting presser adjusting nut | 1 | |
| F36 | H6505I8001 | Presser swing crank (right) rod | 1 | |
| F37 | H2012N0066 | Screw | 1 | |
| F38 | H2100I2060 | Presser swing shaft bushing (left) | 1 | |
| F39 | H2121I0065 | Lifting presser sway crank shaft compl | 1 | |
| F40 | H2013N0069 | Lifting presser sway crank | 1 | |
| F41 | H2008N0066 | Lock nut | 1 | |
| F42 | H2004J0654 | Presser rod | 1 | |
| F43 | H2004J0661 | Presser rod guide | 1 | |

F.UPPER FEED LIFTING ROCK SHAFT MECHANISM

| Fig. No. | Part No. | Description | Pcs. | Remarks |
|----------|------------|--------------------------------------|------|---------|
| F44 | H2004J0067 | Screw | 2 | |
| F45 | H2100I2040 | Out presser | 1 | |
| F46 | H2000N0040 | Space for presser rod plate | 2 | |
| F47 | H2000N0030 | Lifting presser rod plate | 1 | |
| F48 | HA111G0683 | Screw | 2 | |
| F49 | H2008N0065 | Screw | 1 | |
| F50 | H2013N0066 | Lifting presser sway crank guide pin | 1 | |
| F51 | H2100I2070 | Screw | 1 | |
| F52 | H2013N0067 | Presser crank connecting nut | 1 | |
| F53 | H2013J0065 | Washer | 1 | 6 |
| F54 | H2013N0070 | Presser swing crank(left) | 1 | |
| F55 | H2009N0066 | Presser swing shaft | 1 | |
| F56 | HA100I2050 | Washer | 1 | |
| F57 | H2004J0662 | Screw | 1 | |

G.OIL LUBRICATION MECHANISM

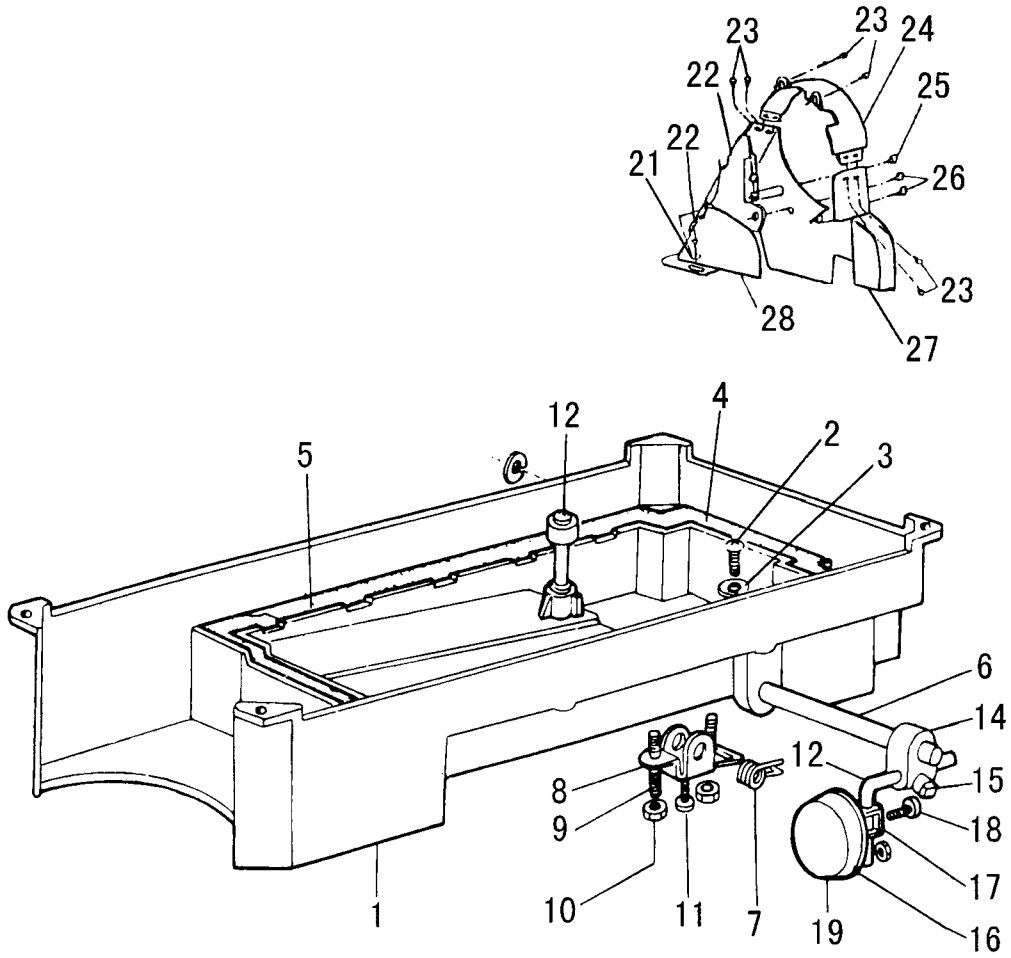


From the library of: Diamond Needle Corp

G.OIL LUBRICATION MECHANISM

| Fig. No. | Part No. | Description | Pcs. | Remarks |
|----------|------------|--------------------------|------|----------------|
| G01 | H6006I8001 | Oil pump body | 1 | |
| G02 | H6010I8001 | Oil pump impeller | 1 | |
| G03 | HA100I2090 | Screw | 1 | SM11/64(40)×13 |
| G04 | HA300I2050 | Screw | 3 | SM1/8(44)×13 |
| G05 | HA100I2050 | Spring washer | 1 | 3.5 |
| G06 | H6012I8001 | Oil pump fitting plate | 1 | |
| G07 | HA100I2070 | Oil adjusting plate | 1 | |
| G08 | HA111I0065 | Oil pump screen complete | 1 | |
| G09 | HA100I2090 | Screw | 3 | SM11/64(40)×13 |
| G10 | HA113I0066 | Oil pipe for hook shaft | 1 | |
| G11 | H2104J0065 | Oil braid fitting plate | 1 | |
| G12 | HA100I2020 | Screw | 2 | SM9/64(40)×11 |
| G13 | H5604G0065 | Oil pipe for arm shaft | 1 | |
| G14 | HA305I0661 | Oil return pipe | 1 | 3×650 |
| G15 | HA100I2150 | Felt pouch | 1 | |
| G16 | HA300I2060 | pipe holder | 1 | |

H.OIL RESERVOIR AND OTHER ACCESSORIES

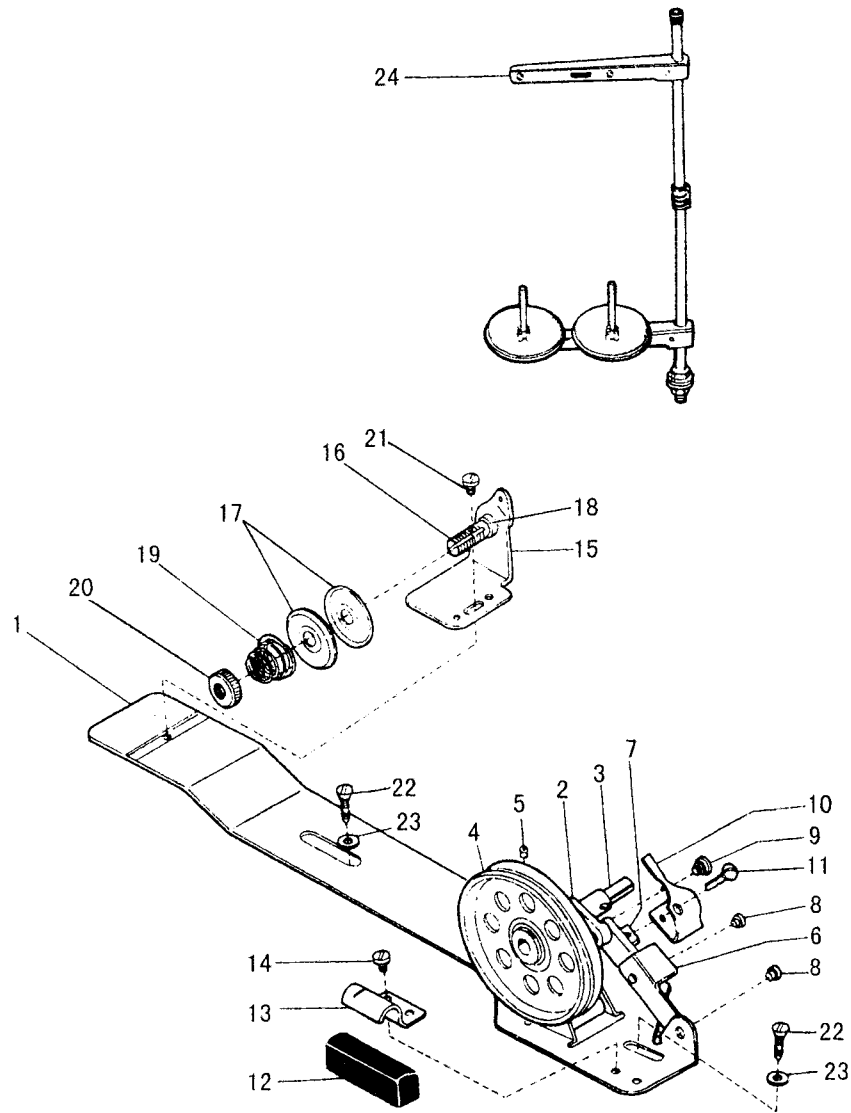


From the library of: Diamond Needle Corp

H.OIL RESERVOIR AND OTHER ACCESSORIES

| Fig. No. | Part No. | Description | Pcs. | Remarks |
|----------|------------|------------------------------------|------|----------------|
| H01 | HA304J0651 | Oil seservoir | 1 | |
| H02 | HA104J0652 | Oil drain screw | 1 | SM5/16(28)×10 |
| H03 | HA104J0653 | Washer | 1 | |
| H04 | HA104J0654 | Gasket for oil reservoir (small) | 1 | |
| H05 | HA104J0655 | Gasket for oil reservoir (big) | 1 | |
| H06 | HA300J2160 | Hinge pin for knee lifter | 1 | |
| H07 | HA104J0657 | Backspring for knee lifter | 1 | |
| H08 | HA104J0658 | Knee lifter stop bracket | 1 | |
| H09 | HA104J0659 | Adjusting screw | 2 | SM15/64(28)×28 |
| H10 | HA104J6510 | Lock nut | 2 | |
| H11 | HA110D0672 | Screw | 1 | |
| H12 | HA106J0661 | Knee lifter lifting rod | 1 | |
| H13 | HA106J0662 | Knee lifter bell crank | 1 | |
| H14 | HA106J0663 | Joint for knee lifter bell crank | 1 | |
| H15 | HA300J2180 | Set screw | 2 | SM5/16(28)×16 |
| H16 | HA106J0665 | Knee lifter plate | 1 | |
| H17 | HA106J0666 | Bracket for knee lifter plate | 1 | |
| H18 | HA106J0667 | Set screw | 1 | SM15/64(28)×8 |
| H19 | HA106J0668 | Pad for knee lifter plate | 1 | |
| H20 | H801045200 | Screw | 4 | GB/T99 4.5×20 |
| H21 | HA300J2230 | Washer | 4 | |
| H22 | H2008O0068 | Belt(upper) | 1 | |
| H23 | HA300B2170 | Screw | 6 | SM11/64(40)×8 |
| H24 | H2008O0671 | Belt mark complrte | 1 | |
| H25 | HA300J2250 | Screw | 1 | M4×12.5 |
| H26 | HA300J2280 | Screw | 2 | SM15/64(28)×8 |
| H27 | H2008O0067 | Belt (lower) | 1 | |
| H28 | HA305J0665 | Belt complete | 1 | |

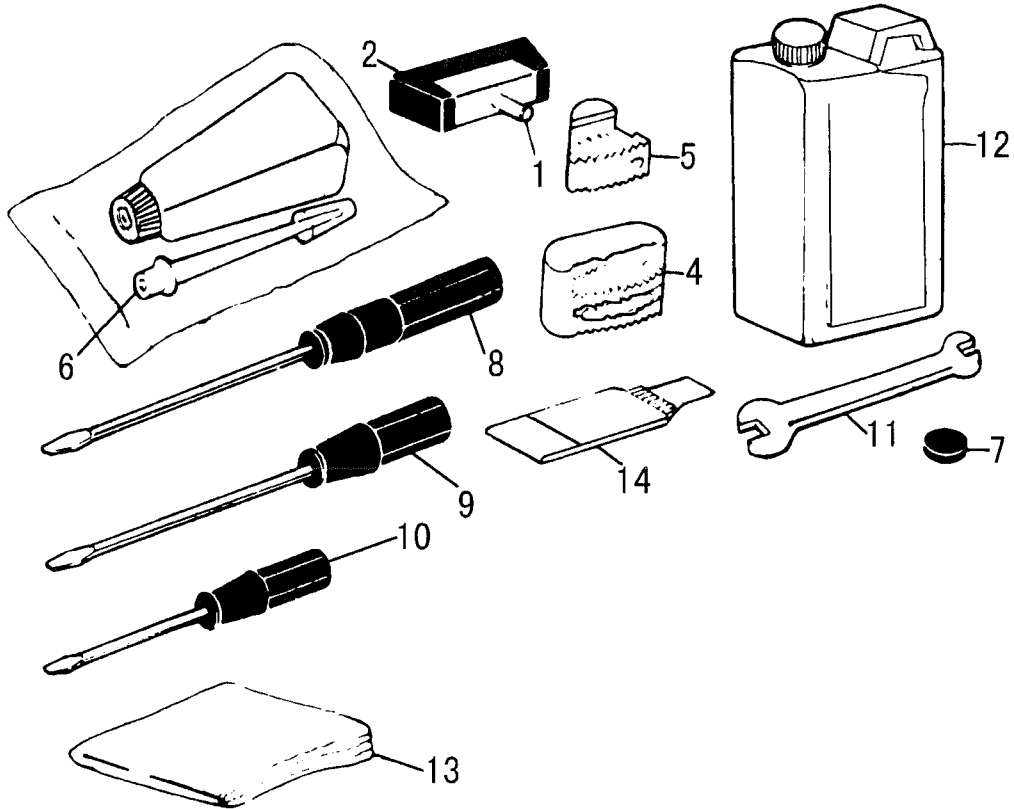
I. BONNIN WINDER MECHANISM



I.BOBBIN WINDER MECHANISM

| Fig. No. | Part No. | Description | Pcs. | Remarks |
|----------|------------|--------------------------------|------|---------|
| I01 | 00H2010 | Bobbin winder base | 1 | |
| I02 | 00H2030 | Shaft for bobbin winder arm | 1 | |
| I03 | HA109J0681 | Bobbin winder spindle | 1 | |
| I04 | 07L0651 | Bobbin winder pulley | 1 | |
| I05 | | Screw | 1 | |
| I06 | 00H2100 | Bobbin winder stop latch lever | 1 | |
| I07 | 00H2110 | Bobbin winder connecting bar | 1 | |
| I08 | 00H2120 | Rivet | 2 | |
| I09 | 00H2130 | Screw | 1 | |
| I10 | 00H2140 | Bobbin winder stop latch | 1 | |
| I11 | 00H2140 | Adjusting screw | 1 | |
| I12 | 00H2180 | Stopper block | 1 | |
| I13 | 00H2150 | Fixture for stopper block | 1 | |
| I14 | | Set screw | 1 | |
| I15 | 00H2160 | Bobbin winder tension bracket | 1 | |
| I16 | 00H2170 | Bobbin winder tension stud | 1 | |
| I17 | | Bobbin winder tension disc | 1 | |
| I18 | H005004060 | Tension stud bushing | 2 | |
| I19 | HNG300D275 | Bobbin winder tension spring | 2 | |
| I20 | | Tension stud nut | 1 | |
| I21 | | Tension bracket screw | 1 | |
| I22 | H801045200 | Wood screw | 2 | |
| I23 | H005004060 | Washer | 2 | |
| I24 | HA200J2030 | Thread stand assay | 1 | |

J. ACCESSORIES



From the library of: Diamond Needle Corp

J.ACCESSORIES

| Fig. No. | Part No. | Description | Pcs. | Remarks |
|----------|------------|-------------------------|------|-----------|
| J01 | HA110J0701 | Hinge of machine head | 2 | |
| J02 | HA307J0671 | Rubber socket for hinge | 2 | |
| J04 | HA300J2050 | Rubber cushion(big) | 2 | |
| J05 | HA300J2060 | Rubber cushion(small) | 2 | |
| J06 | HA100J2110 | Oiler | 1 | |
| J07 | HA100J2120 | Magnet | 1 | |
| J08 | HA300J2070 | Screw driver(long) | 1 | |
| J09 | HA300J2200 | Screw driver(medium) | 1 | |
| J10 | HA300J2210 | Screw driver(short) | 1 | |
| J11 | HA300J2220 | Double-end wrench | 1 | |
| J12 | HA100J2170 | Oil container | 1 | |
| J13 | HA100J2180 | Vinyl cover | 1 | |
| J14 | H2000G2030 | Needle | 4 | DPx17 #22 |

SHANGHAI HUIGONG NO.3 SEWING MACHINE FACTORY

ADD: 1418, Yishan Road, Shanghai, China

Zip Code: 201103

Overseas Business: TEL: 86-21-64853303 FAX: 86-21-64854304

E-mail: highlead@online.sh.cn <http://www.highlead.com.cn>

The description covered in this manual is subject to change for improvement of the commodity without notice

2005.1. Printed